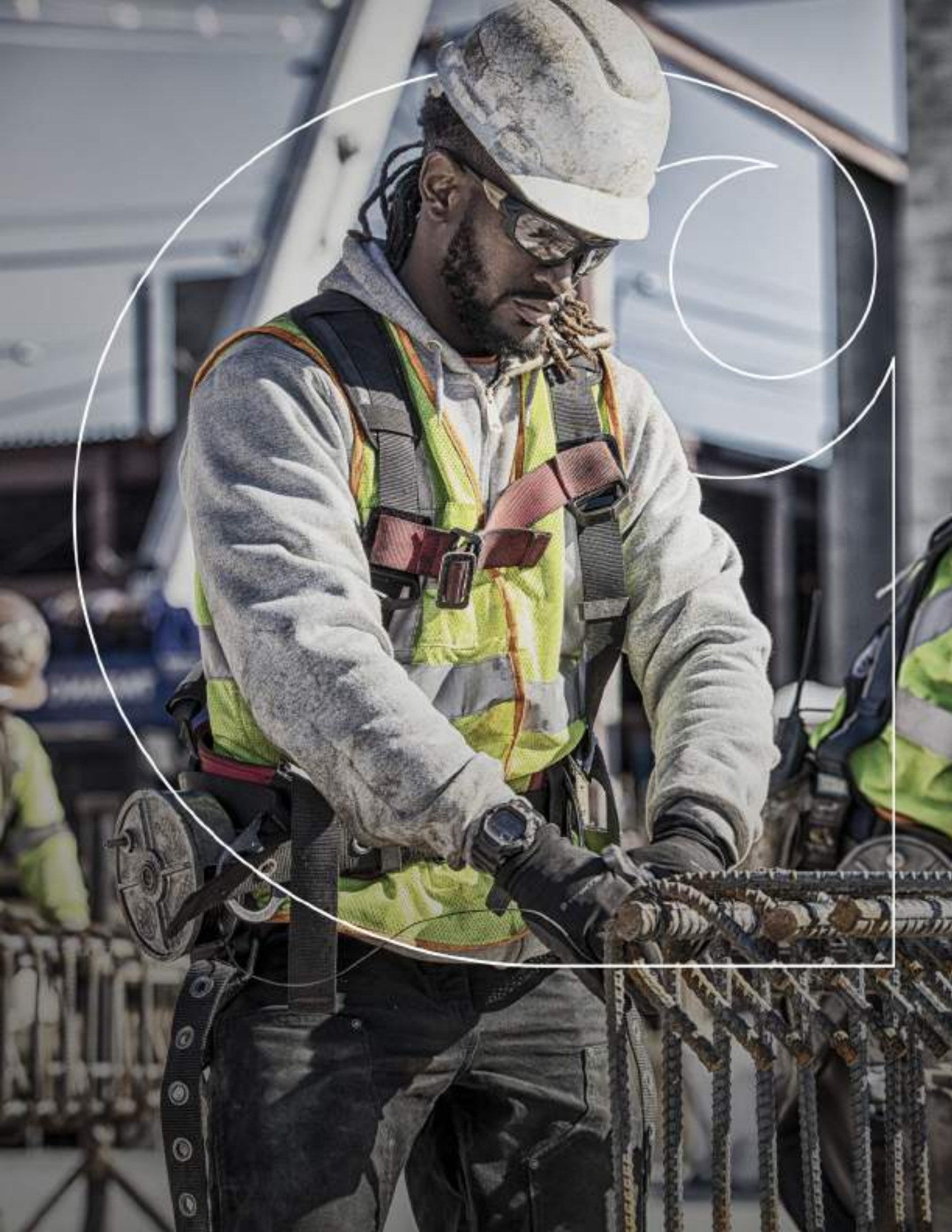




2022



CATALOG





BUILT FOR CREWS OF 10 TO 10,000

Over 130 years of outfitting hard-working businesses like yours has taught us each industry and customer has unique needs. And that's why we're here – to serve you and your specialized needs, delivering uniforms with the durability and all-season comfort required to keep your crew satisfied and outworking them all. We can serve you in a variety of ways:



BUY AS YOU NEED

Directly buy Carhartt gear for your crew, when you need it, with embroidery options and free shipping. Shop direct at www.companygear.carhartt.com



MANAGED UNIFORM PARTNERS

Find a certified partner at companygear.carhartt.com/partners



PERSONALIZED SERVICE

Need more information? Speak directly to a Carhartt business representative:

Phone: 866-698-1125

Email: companygear@carhartt.com

TECHNOLOGIES & INNOVATIONS

Our technologies are born of a simple premise: to Outwork Them All in every weather condition and challenge your crews face. For comfort in extreme heat to the bitter cold, for the mobility your people need to perform at their best, Carhartt has delivered as only a veteran of the industry for over 130 years can.

Rain Defender® durable water repellent technology has your back all day, every day by forcing rain to bead up and roll right off. It makes our gear rain, mist and snow resistant. Available in FR styles.



Storm Defender® waterproof breathable technology is engineered to be dependably durable, waterproof, and breathable – so wet can't get in, but sweat can get out.



Looks traditional, feels exceptional by delivering stretch for freedom of movement and toughness without bulk.



Hardworking crews told us they wanted gear with more stretch and recovery – and we listened. The result was our revolutionary Full Swing® technology: a series of hardworking jackets built to give you greater range of motion.



Force® isn't a fabric, it's a collection of hard-working attributes that benefit you in a number of ways. All Force® products are sweat-wicking with FastDry® technology. But also must possess at least one of the following attributes: 1) Odor-fighting capability 2) Stain Breaker® technology that releases stains while also helping the garment maintain its appearance over a longer period of time. Workers don't just like Force®, they love it because it works harder day in and day out for a reasonable price. If it says Force®, it will Outwork Them All.





TABLE OF CONTENTS

MEN'S KNITS	8
MEN'S SWEATS	15
MEN'S WOSENS	20
MEN'S BOTTOMS	24
MEN'S OUTERWEAR	33
ACCESSORIES	45
WOMEN'S GEAR	52
FLAME RESISTANT	62
WOMEN'S FLAME RESISTANT	88
HIGH VISIBILITY	95
FOOTWEAR	104
LICENSEES	114

STYLE NUMBER REFERENCE



STYLE	PAGE		STYLE	PAGE	
A18	46	Knit Cuffed Beanie	CMP1200	109	Waterproof 11-Inch Wellington (Steel Toe)
A202	46	Fleece 2-in-1 Hat	CMP6120	109	Waterproof 6-Inch Work Boot (Soft Toe)
A267	47	Force Helmet Liner	CMP6220	109	Waterproof 6-Inch Work Boot (Steel Toe)
B11	30	Loose Fit Washed-Duck Utility Work Pant	CMV1121	106	Mud Runner Waterproof 10-Inch Rubber Boot (10" Soft Toe)
B13	26	Loose Fit Utility Jean	CMV1151	106	Mud Runner Waterproof 15-Inch Rubber Boot (15" Soft Toe)
B17	26	Relaxed Fit Heavyweight 5-Pocket Tapered Jean	CMV1451	106	Mud Runner Waterproof 15-Inch Rubber Boot (15" Nano Toe)
B136	30	Loose Fit Washed Duck Double-Front Utility Work Pant	CMW6095	108	Waterproof 6-Inch Wedge Boot (Soft Toe)
B151	29	Loose Fit Canvas Utility Work Pant	CMW6120	109	Waterproof 6-Inch Work Boot (Soft Toe)
C003	41	Loose Fit Firm Duck Insulated Traditional Coat	CMW6220	109	Waterproof 6-Inch Work Boot (Steel Toe)
CMA6421	108	Waterproof 6-Inch Work Boot (Nano Toe)	CMW6274	110	6-Inch Work Boot (Soft Toe)
CMA6425	108	Waterproof 6-Inch Work Boot (Nano Toe)	CMW6275	108	6-Inch Wedge Boot (Steel Toe)
CMD3441	111	Force SD Work Shoe	CMW6295	108	Waterproof 6-Inch Wedge Boot (Steel Toe)
CME6351	105	Ground Force Waterproof 6-Inch Work Boot (Composite Toe)	CWF5335	107	Rugged Flex® 6-Inch Work Boot (Women's Steel Toe)
CME6355	105	Ground Force Waterproof 6-Inch Work Boot (Composite Toe)	FA3411-W	112	Women's Force SD Work Shoe
CME8047	106	Ground Force Waterproof Insulated 8-Inch Work Boot (Soft Toe)	FA5015	111	Force 5-Inch Lightweight Sneaker Boot (Soft Toe)
CME8347	106	Ground Force Waterproof Insulated 8-Inch Work Boot (Composite Toe)	FA5041	111	Force 5-Inch Lightweight Sneaker Boot (Soft Toe)
CME8355	105	Ground Force Waterproof 8-Inch Work Boot (Composite Toe)	FA5415	111	Force 5-Inch Lightweight Sneaker Boot (Nano Toe)
CMF6066	107	Rugged Flex® 6-Inch Work Boot (Soft Toe)	FA5441	111	Force 5-Inch Lightweight Sneaker Boot (Nano Toe)
CMF6366	107	Rugged Flex® 6-Inch Work Boot (Steel Toe)	FRA265	86	Flame Resistant Duck Hood
CMF6371	107	Rugged Flex® Waterproof 6-Inch Work Boot (Composite Toe)	FRB13	73	Flame Resistant Signature Denim Dungaree
CMF6380	107	Rugged Flex® Waterproof 6-Inch Work Boot (Composite Toe)	FRB100	73	Flame Resistant Signature Denim Jean
CML8360	110	Waterproof 8-Inch Climbing Work Boot (Composite Toe)	FRB159	76	Flame Resistant Canvas Pant
CML8369	110	Waterproof 8-Inch Climbing Work Boot (Insulated Composite Toe)	FRB240	77	Flame Resistant Canvas Cargo Pant
CMP1100	109	Waterproof 11-Inch Wellington (Soft Toe)	FRS003	71	Flame Resistant Lightweight Twill Shirt

STYLE	PAGE	
FRS160	72	Flame Resistant Classic Twill Shirt
FW6021-W	112	Women's Waterproof 6-Inch Wedge Work Boot (Soft Toe)
FW6025-W	112	Women's Waterproof 6-Inch Wedge Work Boot (Soft Toe)
FW6225-W	112	Women's Waterproof 6-Inch Wedge Work Boot (Steel Toe)
J140	42	Loose Fit Firm Duck Insulated Flannel-Lined Active Jac
K84	12	Loose Fit Heavyweight Short-Sleeve Pocket Henley T-Shirt
K87	12/96	Loose Fit Heavyweight Short-Sleeve Pocket T-Shirt
K121	16/97	Loose Fit Midweight Sweatshirt
K122	16/97	Loose Fit Midweight Full-Zip Sweatshirt
K126	13/96	Loose Fit Heavyweight Long-Sleeve Pocket T-Shirt
K128	13	Loose Fit Heavyweight Long-Sleeve Pocket Henley T-Shirt
K288	17	Loose Fit Midweight Logo Sleeve Graphic Sweatshirt
K570	14	Loose Fit Midweight Short-Sleeve Pocket Polo
S200	23	Relaxed Fit Midweight Chambray Short-Sleeve Shirt
S202	23	Relaxed Fit Midweight Chambray Long-Sleeve Shirt
100234	64	Flame Resistant Force Cotton Short-Sleeve T-Shirt
100235	64	Flame Resistant Force Cotton Long-Sleeve T-Shirt
100237	65	Flame Resistant Force Cotton Long-Sleeve Henley
100493	98	Force Color Enhanced Short-Sleeve T-Shirt
100494	98	Force Color Enhanced Long-Sleeve T-Shirt
100495	99	Force High-Visibility Short-Sleeve Class 2 T-Shirt
100496	99	Force High-Visibility Long-Sleeve Class 3 T-Shirt
100501	102	High-Visibility Class 2 Vest
100614	18	Rain Defender® Loose Fit Heavyweight Full-Zip Sweatshirt

STYLE	PAGE	
100615	18	Rain Defender® Loose Fit Heavyweight Sweatshirt
100617	19	Rain Defender® Loose Fit Heavyweight Quarter-Zip Sweatshirt
100787	101	High-Visibility Class 3 Waterproof Sherwood Jacket / Quilt Lined
100791	78	Flame Resistant Washed Duck Work Dungaree
101017	84	Flame Resistant Traditional Twill Coverall
101618	80	Flame Resistant Duck Traditional Coat
101621	80	Flame Resistant Duck Active Jac
101626	82	Flame Resistant Duck Bib Lined Overall
101627	81	Flame Resistant Duck Bib Overall
101698	65	Flame Resistant Force Cotton Hybrid Shirt
102080	57	Women's Rugged Flex® Loose Fit Canvas Work Pant
102179	83	Flame Resistant Full Swing® Quick Duck® Jacket
102182	82	Flame Resistant Full Swing® Quick Duck® Coat
102183	87	Flame Resistant Quick Duck® Hood
102199	37	Rain Defender® Relaxed Fit Heavyweight Softshell Jacket
102207	38	Full Swing® Loose Fit Quick Duck Insulated Jacket
102208	36	Rain Defender® Relaxed Fit Lightweight Insulated Jacket
102286	37	Rain Defender® Relaxed Fit Lightweight Insulated Vest
102291	27	Rugged Flex® Relaxed Fit Canvas Work Pant
102368	42	Firm Duck Insulated Hood
102382	58	Women's Storm Defender® Relaxed Fit Heavyweight Jacket
102450	94	Women's Flame Resistant Rugged Flex® Twill Coverall
102459	91	Women's Flame Resistant Rugged Flex® Twill Shirt
102517	27	Rugged Flex® Relaxed Fit Canvas 5-Pocket Work Pant

STYLE NUMBER REFERENCE



STYLE	PAGE	
102537	22	Rugged Professional™ Series Relaxed Fit Canvas Short-Sleeve Work Shirt
102538	22	Rugged Professional™ Series Relaxed Fit Canvas Long-Sleeve Work Shirt
102685	89	Women's Flame Resistant Force Cotton Long-Sleeve Crew T-Shirt
102687	89	Women's Flame Resistant Force Cotton Hybrid Shirt
102688	91	Women's Flame Resistant Rugged Flex® Jean – Original-Fit
102691	83	Flame Resistant Quick Duck® Lined Bib Overall
102694	94	Women's Flame Resistant Full Swing® Quick Duck® Jacket
102731	56	Women's Rugged Flex® Loose Fit Jean
102776	43	Relaxed Fit Duck Bib Overall
102788	54	Women's Relaxed Fit Midweight Full-Zip Sweatshirt
102804	25	Rugged Flex® Relaxed Fit 5-Pocket Jean
102808	25	Rugged Flex® Relaxed Fit Utility Jean
102843	66	Flame Resistant High-Visibility Force Hybrid Shirt – Class 3
102869	85	Flame Resistant Knit Watch Hat
102903	63	Flame Resistant Force Short-Sleeve T-Shirt
102904	63	Flame Resistant Force Long-Sleeve T-Shirt
102905	66	Flame Resistant High-Visibility Force Long-Sleeve T-Shirt – Class 3
103056	49	Rugged Professional™ Series Canvas Mesh-Back Cap
103067	53	Women's Loose Fit Heavyweight Short-Sleeve Pocket T-Shirt
103103	58	Women's Rugged Professional™ Series Loose Fit Work Short
103104	57	Women's Rugged Professional™ Series Rugged Flex® Loose Fit Canvas Work Pant
103105	56	Women's Rugged Professional™ Series Relaxed Fit Canvas Short Sleeve Work Shirt
103106	55	Women's Rugged Professional™ Series Relaxed Fit Canvas Long-Sleeve Work Shirt
103109	28	Rugged Professional™ Series Rugged Flex® Relaxed Fit Canvas Work Pant

STYLE	PAGE	
103111	32	Rugged Professional™ Series Rugged Flex® Relaxed Fit Canvas Work Short
103208	102	High-Visibility Class E Waterproof Pant / Unlined
103244	53	Women's Loose Fit Heavyweight Long-Sleeve Pocket T-Shirt
103519	85	Flame Resistant Fleece 2-in-1 Hat
103520	86	Flame Resistant Force Balaclava
103542	31	Rugged Flex® Relaxed Fit Canvas Cargo Work Short
103652	31	Rugged Flex® Relaxed Fit Canvas Utility Work Short
103574	28	Rugged Flex® Relaxed Fit Canvas Cargo Work Pant
103938	49	Canvas Cap
104049	61	Women's Relaxed Fit Washed Duck Insulated Bib Overall
104050	38	Loose Fit Washed Duck Insulated Active Jac
104053	60	Women's Loose Fit Washed Duck Insulated Active Jac
104078	19	Rain Defender® Loose Fit Midweight Thermal-Lined Full-Zip Sweatshirt
104138	71	Flame Resistant Force Original-Fit Lightweight Long-Sleeve Button-Front Shirt
104147	90	Women's Flame Resistant Force Relaxed Fit Long-Sleeve Shirt
104204	77	Flame Resistant Rugged Flex® Relaxed Fit Canvas 5-Pocket Work Pant
104205	78	Flame Resistant Rugged Flex® Relaxed Fit Canvas Cargo Pant
104224	60	Women's Loose Fit Washed Duck Sherpa-Lined Mock Neck Vest
104229	54	Women's Relaxed Fit Midweight Short-Sleeve Pocket Polo
104244	41	Washed Duck Insulated Hood
104255	11	Force Relaxed Fit Midweight Long-Sleeve Quarter-Zip Mock-Neck T-Shirt
104277	40	Loose Fit Washed Duck Sherpa-Lined Mock Neck Vest
104293	39	Loose Fit Washed Duck Sherpa-Lined Coat
104314	59	Women's Rain Defender® Relaxed Fit Lightweight Insulated Jacket

STYLE	PAGE	
104315	59	Women's Rain Defender Lightweight Insulated Vest
104392	39	Relaxed Fit Washed Duck Sherpa-Lined Jacket
104393	43	Loose Fit Firm Duck Insulated Bib Overall
104395	40	Loose Fit Washed Duck Insulated Rib Collar Vest
104616	10	Force Relaxed Fit Midweight Short-Sleeve Pocket T-Shirt
104617	10	Force Relaxed Fit Midweight Long-Sleeve Pocket T-Shirt
104633	76	Flame Resistant Force® Rugged Flex Relaxed Fit Utility Jean
104670	35	Storm Defender® Loose Fit Heavyweight Jacket
104671	36	Rain Defender® Relaxed Fit Lightweight Jacket
104675	35	Storm Defender® Loose Fit Heavyweight Pant
104790	75	Flame Resistant Force Rugged Flex® Relaxed Fit 5-Pocket Jean
104981	81	Flame Resistant Relaxed Fit Duck Sherpa-Lined Mock Neck Vest
104982	67	Flame Resistant Force Original Fit Midweight Hooded Zip-Front Sweatshirt
104983	67	Flame Resistant Force Original Fit Midweight Hooded Sweatshirt
104987	100	High-Visibility Rain Defender Loose Fit Midweight Class 3 Sweatshirt
104988	100	High-Visibility Rain Defender Loose Fit Midweight Thermal-Lined Full-Zip Class 3 Sweatshirt
105010	79	Flame Resistant Rain Defender Relaxed Fit Fleece Jacket
105012	79	Flame Resistant Rain Defender Relaxed Fit Mock Neck Fleece
105015	93	Women's Flame Resistant Rugged Flex® Relaxed Fit Canvas Work Pant
105016	84	Flame Resistant Loose Fit Twill Coverall
105019	44	Rugged Flex® Canvas Coverall
105028	68	Flame Resistant Force Original Fit Midweight Mock Neck Sweatshirt
105069	74	Flame Resistant Rugged Flex® 5-Pocket Jean – Straight Fit
105079	74	Flame Resistant Rugged Flex® Jean – Relaxed Fit

STYLE	PAGE	
105172	75	Flame Resistant Rugged Flex® Relaxed Fit 5-Pocket Tapered Jean
105221	47	Force Extremes® Knit Neck Gaiter
105283	93	Women's Flame Resistant Force Fitted Midweight Utility Legging
105284	90	Women's Flame Resistant Force Relaxed Fit Midweight Hooded Zip-Front
105291	21	Force Relaxed Fit Lightweight Long-Sleeve Shirt
105292	21	Force Relaxed Fit Lightweight Short-Sleeve Shirt
105293	11	Force Relaxed Fit Lightweight Short-Sleeve Pocket Polo
105294	17	Loose Fit Midweight Quarter-Zip Mock Neck Sweatshirt
105295	55	Women's Relaxed Fit Midweight Quarter-Zip Mock Neck Sweatshirt
105298	48	Canvas Mesh-Back Cap
105300	101	High-Visibility Storm Defender® Loose Fit Lightweight Class 3 Jacket



MEN'S KNITS

**KEEPS WORKERS COOL, KEEPS WORKING HARD
WITH PROVEN CARHARTT DURABILITY BUILT-IN**



THE HOTTER IT GETS, THE HARDER THIS GEAR WORKS

LEADING THE FIGHT AGAINST HEAT
EXHAUSTION WITH MAX FORCE

Keep workers dry and comfortable through the hottest conditions with Force®. Our proprietary design combines odor-fighting properties, FastDry® to wick sweat and Stain Breaker® to stay looking sharper, longer. Force® is the on-site advantage that outworks the heat and every other crew not wearing our patch.

FORCE carhartt®

FORCE MAX FORCE

Force Relaxed Fit Midweight Short-Sleeve Pocket T-Shirt

Model No. **TK4616-M** SAP No. **104616**

FABRIC

- Solids: 5.75-ounce, 65% cotton / 35% polyester stretch plaited jersey knit
- Heather gray: 59% cotton / 41% polyester stretch plaited jersey knit
- Other Heathers: 60% polyester / 40% cotton stretch plaited jersey knit

FEATURES

- Built with Force® technology to wick sweat and dry fast
- FastDry® technology keeps you cool for all day comfort
- Stain Breaker® technology releases stains
- UPF 25+
- Smooth flatlock seams
- Raglan sleeves increase range of motion
- Ventilated side panels
- Drop-tail hem for added coverage
- Left-chest pocket with pen stall
- Tagless neck
- Imported

NEW



104616-N04
Black



104616-I26
Navy



104616-CRH
Carbon Heather



104616-HGY
Heather Gray



REGULAR S M L XL 2XL

BIG 3XL 4XL

TALL L XL 2XL 3XL

Force Relaxed Fit Midweight Long-Sleeve Pocket T-Shirt

Model No. **TK4617-M** SAP No. **104617**

FABRIC

- Solids: 5.75-ounce, 65% cotton / 35% polyester stretch plaited jersey knit
- Heather gray: 59% cotton / 41% polyester stretch plaited jersey knit
- Other Heathers: 60% polyester / 40% cotton stretch plaited jersey knit

FEATURES

- Built with Force® technology to wick sweat and dry fast
- FastDry® technology keeps you cool for all day comfort
- Stain Breaker® technology releases stains
- UPF 25+
- Smooth flatlock seams
- Raglan sleeves increase range of motion
- Ventilated side panels
- Drop-tail hem for added coverage
- Left-chest pocket with pen stall
- Tagless neck label
- Imported

NEW



104617-I26
Navy



104617-N04
Black



104617-CRH
Carbon Heather



104617-HGY
Heather Gray



REGULAR S M L XL 2XL

BIG 3XL 4XL

TALL L XL 2XL 3XL

Force Relaxed Fit Midweight Long-Sleeve Quarter-Zip Mock Neck T-Shirt			
Model No.	TK4255-M	SAP No.	104255
FABRIC <ul style="list-style-type: none"> Solids: 5.75-ounce, 65% cotton / 35% polyester stretch plaited jersey knit Heather gray: 59% cotton / 41% polyester stretch plaited jersey knit Other Heathers: 60% polyester / 40% cotton stretch plaited jersey knit FEATURES <ul style="list-style-type: none"> Built with Force® technology to wick sweat and dry fast FastDry® technology keeps you cool for all day comfort Stain Breaker® technology releases stains UPF 25+ Smooth flatlock seams Raglan sleeves increase range of motion Drop-tail hem for added coverage Left-chest pocket with pen stall Quarter zip Tagless neck label Imported Prev. Name: TK255 M Force Relaxed Fit Midweight Long-Sleeve 1/4-Zip Pocket T-Shirt 			

NEW



104255-N04
Black



104255-HGY
Heather Gray



104255-I26
Navy



REGULAR S M L XL 2XL

BIG 3XL 4XL

Force Relaxed Fit Lightweight Short-Sleeve Pocket Polo			
Model No.	TK5293-M	SAP No.	105293
FABRIC <ul style="list-style-type: none"> 4.25-ounce, 100% polyester birdseye textured knit FEATURES <ul style="list-style-type: none"> FastDry® technology wicks away sweat for comfort Colorfast Stain Breaker® technology releases stains Non-roll rib knit polo collar Three-button front Open, non-banded sleeves for increased range of motion Left-chest pocket with sewn on Carhartt label Tagless neck label Carhartt Force® labeling on left sleeve Imported 			

NEW



105293-I26
Navy



105293-029
Shadow



REGULAR S M L XL 2XL

BIG 3XL 4XL

TALL L XL 2XL 3XL

Loose Fit Heavyweight Short-Sleeve Pocket T-Shirt

Model No. **K87-M** SAP No. **K87**

FABRIC

- 6.75-ounce, 100% cotton jersey knit
- Heather Gray fiber content is 90% cotton / 10% polyester
- Other heathers: 60% cotton / 40% polyester

FEATURES

- Rib-knit crewneck
- Side-seam construction minimizes twisting
- Left-chest pocket with sewn-on Carhartt label
- Tagless neck label
- Imported
- *Prev. Name:* Workwear Pocket Short-Sleeve T-Shirt

MATCHING WOMEN'S STYLE AVAILABLE IN SELECT COLORS



K87-BLK
Black



K87-HGY
Heather Gray



K87-BLS
Bluestone



K87-CRH
Carbon Heather



K87-DES
Desert



K87-NVY
Navy



K87-BLM
Brite Lime



K87-BOG
Brite Orange



K87-G55
North Woods Heather

REGULAR S M L XL 2XL

BIG 3XL 4XL 5XL

TALL L XL 2XL 3XL 4XL

Loose Fit Heavyweight Short-Sleeve Pocket Henley T-Shirt

Model No. **TK0084-M** SAP No. **K84**

FABRIC

- 6.75-ounce, 100% cotton jersey knit
- Heathers: 60% cotton / 40% polyester
- Heather Gray: 90% cotton / 10% polyester

FEATURES

- Henley collar with three-button front
- Side-seam construction minimizes twisting
- Left-chest pocket with sewn-on Carhartt label
- Tagless neck label
- Imported
- *Prev. Name:* Workwear Pocket Short-Sleeve Henley



K84-BLK
Black



K84-026
Carbon Heather



K84-NVY
Navy



K84-HGY
Heather Gray

REGULAR S M L XL 2XL

BIG 3XL 4XL

TALL L XL 2XL 3XL

Loose Fit Heavyweight Long-Sleeve Pocket T-Shirt			
Model No.	TK0126-M	SAP No.	K126
FABRIC <ul style="list-style-type: none"> · 6.75-ounce, 100% cotton jersey knit · Heather Gray fiber content is 90% cotton / 10% polyester · Other heathers: 60% cotton / 40% polyester FEATURES <ul style="list-style-type: none"> · Rib-knit crewneck and cuffs · Side-seam construction minimizes twisting · Left-chest pocket with sewn-on Carhartt label · Tagless neck label · Imported · <i>Prev. Name:</i> Workwear Pocket Long-Sleeve T-Shirt MATCHING WOMEN'S STYLE AVAILABLE IN SELECT COLORS			



K126-BLK
Black



K126-NVY
Navy



K126-HGY
Heather Gray



K126-CRH
Carbon Heather



K126-BLM
Brite Lime



K126-BOG
Brite Orange

REGULAR S M L XL 2XL

BIG 3XL 4XL 5XL

TALL L XL 2XL 3XL 4XL

Loose Fit Heavyweight Long-Sleeve Pocket Henley T-Shirt			
Model No.	TK0128-M	SAP No.	K128
FABRIC <ul style="list-style-type: none"> · 6.75-ounce, 100% cotton jersey knit · Heather Gray fiber content is 90% cotton / 10% polyester · Carbon Heather fiber content is 60% cotton / 40% polyester FEATURES <ul style="list-style-type: none"> · Rib-knit collar and cuffs · Three-button front · Side-seam construction minimizes twisting · Left-chest pocket with sewn-on Carhartt label · Tagless neck label · Imported · <i>Prev. Name:</i> Workwear Pocket Long-Sleeve Henley 			



K128-BLK
Black



K128-NVY
Navy



K128-HGY
Heather Gray



K128-CRH
Carbon Heather



K128-DES
Desert

REGULAR S M L XL 2XL

BIG 3XL 4XL

TALL L XL 2XL 3XL

Loose Fit Midweight Short-Sleeve Pocket Polo			
Model No.	TK0570-M	SAP No.	K570

- FABRIC**
- 6-ounce, 62% polyester / 38% cotton pique knit
- FEATURES**
- Colorfast · Stain Breaker® technology releases stains
 - No-roll rib-knit polo collar
 - Open, non-banded sleeves for increased range of motion
 - Three-button front
 - Left-chest Contractor's Work Pocket® with unique silo for pens, pencils or tools
 - Square bottom with side vents
 - Tagless neck label
 - Imported
 - *Prev. Name:* Contractor's Work Pocket® Polo
- MATCHING WOMEN'S STYLE AVAILABLE IN SELECT COLORS**



K570-BLK
Black



K570-NVY
Navy



K570-HGY
Heather Gray

REGULAR	S	M	L	XL	2XL	BIG	3XL	4XL	TALL	L	XL	2XL	3XL
---------	---	---	---	----	-----	-----	-----	-----	------	---	----	-----	-----

A man with a beard is shown from the chest up, carrying a large, dark, textured log on his shoulder. He is wearing a bright green hoodie that is covered in dirt and grime. The background is dark and out of focus.

MEN'S SWEATS

**THE COMFORT AND TOUGHNESS YOUR
CREW NEEDS TO POWER THROUGH**

KNIT SHIRTS

SWEATS

WOVEN SHIRTS

WORK JEANS, PANTS & SHORTS

RAINWEAR & OUTERWEAR

ACCESSORIES

WORK BOOTS

WOMEN'S GEAR

FR

FR-WOMEN'S

HI-VIS

LICENSES

ADDITIONAL INFO

Loose Fit Midweight Sweatshirt

Model No. **TS0121-M** SAP No. **K121**

FABRIC

- 10.5-ounce, 50% cotton / 50% polyester blend
- Heather Gray fiber content is 70% cotton / 30% polyester

FEATURES

- Attached three-piece hood with drawcord closure
- Front handwarmer pocket
- Stretchable, spandex-reinforced rib-knit cuffs and waistband
- Carhartt-strong triple-stitched main seams
- Carhartt label sewn on pocket
- Imported
- *Prev. Name:* Midweight Hooded Sweatshirt



K121-BLK
Black



K121-472
New Navy



K121-026
Carbon Heather



K121-HGY
Heather Gray



K121-316
Moss



K121-BLM
Brite Lime



K121-BOG
Brite Orange

REGULAR S M L XL 2XL

BIG 3XL 4XL

TALL L XL 2XL 3XL

Loose Fit Midweight Full-Zip Sweatshirt

Model No. **TS0122-M** SAP No. **K122**

FABRIC

- 10.5-ounce, 50% cotton / 50% polyester blend
- Heather gray fiber content is 70% cotton / 30% polyester

FEATURES

- Attached three-piece hood with drawcord closure
- Full-length brass front zipper
- Two front hand-warmer pockets
- Stretchable, spandex-reinforced rib-knit cuffs and waistband
- Carhartt label sewn on pocket
- Imported
- *Prev. Name:* Midweight Hooded Front-Zip Sweatshirt

MATCHING WOMEN'S STYLE AVAILABLE IN SELECT COLORS



K122-BLK
Black



K122-472
New Navy



K122-026
Carbon Heather



K122-HGY
Heather Gray



K122-316
Moss



K122-BLM
Brite Lime



K122-BOG
Brite Orange

REGULAR S M L XL 2XL

BIG 3XL 4XL

TALL L XL 2XL 3XL

Loose Fit Midweight Logo Sleeve Graphic Sweatshirt

Model No.	TS0288-M	SAP No.	K288
-----------	----------	---------	------

FABRIC

- Solids: 10.5-ounce, 50% cotton / 50% polyester blend
- Heather Gray fiber content is 70% cotton / 30% polyester

FEATURES

- Attached three-piece hood with drawcord closure
- Front handwarmer pocket
- Stretchable, spandex-reinforced rib-knit cuffs and waistband
- Carhartt signature logo printed on left sleeve
- Carhartt label sewn on pocket
- Imported
- Prev. Name:* Midweight Signature Sleeve Logo Hooded Sweatshirt

NEW



K288-BLK
Black/White



K288-026
Carbon Heather/Brite Lime



K288-E20
Heather Gray/Black



K288-472
New Navy/White



K288-BRN
Carhartt Brown/Black

REGULAR S M L XL 2XL

BIG 3XL 4XL 5XL

TALL L XL 2XL 3XL 4XL

Loose Fit Midweight Quarter-Zip Mock-Neck Sweatshirt

Model No.	TS5294-M	SAP No.	105294
-----------	----------	---------	--------

FABRIC

- 10.5-ounce, 50% cotton/50% polyester blend

FEATURES

- Mock neck collar
- Quarter-length zipper with storm flap
- Front handwarmer pocket
- Stretchable, spandex-reinforced rib-knit cuffs and waistband
- Carhartt label sewn on pocket
- Imported

MATCHING WOMEN'S STYLE AVAILABLE

NEW



105294-CRH
Carbon Heather



105294-472
New Navy

REGULAR S M L XL 2XL

BIG 3XL 4XL

TALL L XL 2XL 3XL

**Rain Defender® Loose Fit Heavyweight
Sweatshirt**
Model No. TS0615-M SAP No. 100615
FABRIC

- 13-ounce, 75% cotton / 25% polyester blend with Rain Defender® durable water-repellent finish
- Carbon Heather fiber content is 55% cotton / 45% polyester

FEATURES

- Attached jersey-lined three-piece hood with drawcord closure
- Front handwarmer pocket has a hidden security pocket inside
- Stretchable, spandex-reinforced rib-knit cuffs and waistband
- Imported
- *Prev. Name:* Rain Defender® Paxton Heavyweight Hooded Sweatshirt


 100615-001
Black

 100615-026
Carbon Heather

 100615-472
New Navy


REGULAR S M L XL 2XL

BIG 3XL 4XL

TALL L XL 2XL 3XL

**Rain Defender® Loose Fit Heavyweight
Full-Zip-Sweatshirt**
Model No. TS0614-M SAP No. 100614
FABRIC

- 13-ounce, 75% cotton / 25% polyester blend with Rain Defender® durable water-repellent finish
- Carbon heather 55% cotton / 45% polyester

FEATURES

- Attached jersey-lined three-piece hood with drawcord closure
- Antique-finish brass front zipper
- Two front handwarmer pockets have a hidden security pocket inside
- Stretchable, spandex-reinforced rib-knit cuffs and waistband
- Replaces K185
- Imported
- *Prev. Name:* Rain Defender® Paxton Heavyweight Hooded Zip-Front Sweatshirt


 100614-001
Black


 100614-026
Carbon Heather

 100614-472
New Navy


REGULAR S M L XL 2XL

BIG 3XL 4XL

TALL L XL 2XL 3XL

Rain Defender® Loose Fit Heavyweight Quarter-Zip Sweatshirt			
Model No.	TS0617-M	SAP No.	100617
FABRIC <ul style="list-style-type: none"> 13-ounce, 75% cotton / 25% polyester blend with Rain Defender® durable water repellent Carbon Heather fiber content is 55% cotton / 45% polyester FEATURES <ul style="list-style-type: none"> Attached, jersey-lined three-piece hood with drawcord closure Mock neck collar with 8-inch antique-finish brass zipper Front handwarmer pocket has a hidden security pocket inside Stretchable, spandex-reinforced rib-knit cuffs and waistband Replaces K217 Imported Prev. Name: Rain Defender® Paxton Heavyweight Hooded Zip Mock Sweatshirt 			
<div>  </div>			
REGULAR		S M L XL 2XL	BIG 3XL 4XL
TALL		L XL 2XL 3XL	




100617-001
Black



100617-026
Carbon Heather



100617-472
New Navy

Rain Defender® Loose Fit Midweight Thermal-Lined Full-Zip Sweatshirt			
Model No.	TS4078-M	SAP No.	104078
FABRIC <ul style="list-style-type: none"> 10.5-ounce, 50% cotton / 50% polyester fleece FEATURES <ul style="list-style-type: none"> Polyester thermal lining Rain Defender® durable water repellent (DWR) Attached, thermal-lined three-piece hood with drawcord closure Full-length brass zipper Spandex-reinforced rib-knit cuffs and waist Locker loop Two front handwarmer pockets with flaps for added security Hidden media pocket Inside pocket with zipper closure Replaces 100632 Imported Prev. Name: Rain Defender® Original Fit Midweight Thermal Lined Full-Zip Sweatshirt 			
<div>  </div>			
REGULAR		S M L XL 2XL	BIG 3XL 4XL
TALL		L XL 2XL 3XL	



104078-001
Black



104078-024
Carbon Heather/Black



104078-472
New Navy

A man in a dark short-sleeved button-down shirt, grey cargo pants, a black baseball cap, and a tactical vest is walking towards the camera. He is carrying a large pink jug in his left hand and a yellow toolbox in his right hand. He is standing next to the open back of a white van. The van's interior is visible, showing various tools and equipment. The background is a light-colored wall.

MEN'S WOVENS

**NOT YOUR AVERAGE WOVENS: BUILT TO BREATHE,
MOVE AND TAKE A BEATING DAY IN AND DAY OUT**

Force Relaxed Fit Lightweight Long-Sleeve Shirt

Model No. TW5291-M SAP No. 105291

FABRIC

- 2.9 ounce, 71% polyester, 29% nylon chambray

FEATURES

- FastDry® technology wicks away sweat for comfort
- Anti-odor
- UPF 50+
- Rugged Flex® technology for ease of movement
- Button-down collar
- Back Yoke Shoulder pleats for ease of movement
- Two chest pockets with a pen stall and mitered flaps with button closures
- Two-button adjustable cuffs with extended plackets
- Imported

NEW



105291-STL
Steel



105291-DKH
Dark Khaki



105291-I26
Navy



REGULAR S M L XL 2XL

BIG 3XL 4XL

TALL L XL 2XL 3XL

Force Relaxed Fit Lightweight Short-Sleeve Shirt

Model No. TW5292-M SAP No. 105292

FABRIC

- 2.9 ounce, 71% polyester, 29% nylon chambray

FEATURES

- FastDry® technology wicks away sweat for comfort
- Anti-odor
- UPF 50+
- Rugged Flex® technology for ease of movement
- Button-down collar
- Back Yoke Shoulder pleats for ease of movement
- Two chest pockets with a pen stall and mitered flaps with button closures
- Imported

NEW



105292-STL
Steel



105292-DKH
Dark Khaki



105292-I26
Navy



REGULAR S M L XL 2XL

BIG 3XL 4XL

TALL L XL 2XL 3XL

Rugged Professional™ Series Relaxed Fit Canvas Long-Sleeve Work Shirt

Model No. **TW2538-M** SAP No. **102538**

FABRIC

- 5-ounce, Rugged Flex® Canvas: 58% cotton / 39%polyester / 3% Spandex

FEATURES

- Rugged Flex® durable stretch technology for ease of movement
- Stain Breaker® technology and wrinkle-resistance for easy care
- Color fast for a professional appearance wash-after-wash
- Long Sleeves Include adjustable cuffs and extended doghouse placket with button closure
- Triple-needle yoke and side seam
- Button-down collar
- Two chest pockets with button closures
- Left-chest map pocket with zipper closure
- Durable mesh internal pocket
- Imported

MATCHING WOMEN'S STYLE AVAILABLE



102538-001
Black



102538-253
Dark Khaki



102538-412
Navy



REGULAR S M L XL 2XL

BIG 3XL 4XL

TALL M L XL 2XL 3XL 4XL

Rugged Professional™ Series Relaxed Fit Canvas Short-Sleeve Work Shirt

Model No. **TW2537-M** SAP No. **102537**

FABRIC

- 5-ounce, Rugged Flex® Canvas: 58% cotton / 39%polyester / 3% Spandex

FEATURES

- Rugged Flex® durable stretch technology for ease of movement
- Stain Breaker® technology and wrinkle-resistance for easy care
- Color fast for a professional appearance wash-after-wash
- Triple-needle yoke and side seam
- Button-down collar
- Two chest pockets with button closures
- Left-chest map pocket with zipper closure
- Durable mesh internal pocket
- Imported

MATCHING WOMEN'S STYLE AVAILABLE



102537-001
Black



102537-253
Dark Khaki



102537-412
Navy



REGULAR S M L XL 2XL

BIG 3XL 4XL

TALL M L XL 2XL 3XL 4XL

Relaxed Fit Midweight Chambray Long-Sleeve Shirt

Model No. **TW0202-M** SAP No. **S202**

FABRIC

- 4.5-ounce, 100% cotton ring-spun chambray

FEATURES

- Garment washed for a soft finish and reduced shrinkage
- Button-down collar
- Two chest pockets with mitered flaps and button closures
- Two-button adjustable cuffs with extended plackets
- Shoulder pleats for ease of movement
- Carhartt-strong triple-stitched main seams
- Imported
- Prev. Name:* Fort Solid Long-Sleeve Shirt



S202-256
Dark Tan Chambray



S202-CBL
Blue Chambray

REGULAR S M L XL 2XL

BIG 3XL 4XL

TALL L XL 2XL 3XL

Relaxed Fit Midweight Chambray Short-Sleeve Shirt

Model No. **TW0200-M** SAP No. **S200**

FABRIC

- 4.5-ounce, 100% cotton ring-spun chambray

FEATURES

- Garment washed for a soft finish and reduced shrinkage
- Button-down collar
- Two chest pockets with mitered flaps and button closures
- Shoulder pleats for ease of movement
- Carhartt-strong triple-stitched main seams
- Imported
- Prev. Name:* Fort Solid Short-Sleeve Shirt



S200-256
Dark Tan Chambray



S200-CBL
Blue Chambray

REGULAR S M L XL 2XL

BIG 3XL 4XL

TALL L XL 2XL 3XL



MEN'S BOTTOMS

**LEGENDARY CARHARTT DURABILITY
AND EASE OF MOVEMENT BUILT-IN**

Rugged Flex® Relaxed Fit 5-Pocket Jean

Model No. **BD2804-M** SAP No. **102804**

FABRIC

- 12-ounce, 85% cotton / 14% polyester / 1% spandex denim

FEATURES

- Rugged Flex® durable stretch technology for ease of movement
- Made with our most durable, abrasion-resistant denim
- Sits slightly below the waist
- Comfortable fit through the seat and thigh with more room to move
- Stronger sewn-on-seam belt loops
- Straight leg opening fits over boots
- Imported
- *Prev. Name:* Rugged Flex® Relaxed Fit Straight Jean

MATCHING WOMEN'S STYLE AVAILABLE



102804-498
Superior



WAIST SIZES 30" – 44"
BIG & TALL EVEN WAIST SIZES 46" – 54"

EVEN INSEAMS 28" – 36"
EVEN INSEAMS 30" – 32"

Rugged Flex® Relaxed Fit Utility Jean

Model No. **BD2808-M** SAP No. **102808**

FABRIC

- 12-ounce, 85% cotton / 14% polyester / 1% spandex denim

FEATURES

- Rugged Flex® durable stretch technology for ease of movement
- Made with our most durable, abrasion-resistant denim
- Sits slightly below the waist
- Comfortable fit through the seat and thigh with more room to move
- Multiple tool and utility pockets
- Stronger sewn-on-seam belt loops
- Straight leg opening fits over boots
- Imported
- *Prev. Name:* Rugged Flex® Relaxed Fit Dungaree



102808-498
Superior



WAIST SIZES 30" – 44"
BIG & TALL EVEN WAIST SIZES 46" – 50"

EVEN INSEAMS 30" – 36"
EVEN INSEAMS 30" – 32"

Relaxed Fit Heavyweight 5-Pocket Tapered Jean

Model No. **BD0017-M** SAP No. **B17**

FABRIC

- 15-ounce, 100% cotton denim

FEATURES

- Sits above the waist
- Comfortable fit through the seat and thigh with more room to move
- Stronger sewn-on-seam belt loops
- Tapered leg opening fits over boots
- Imported
- *Prev. Name:* Relaxed Fit Tapered-Leg Jean



B17-DST
Darkstone

WAIST SIZES 28" – 44"
BIG & TALL EVEN WAIST SIZES 46" – 54"

EVEN INSEAMS 28" – 36"
EVEN INSEAMS 30" – 32"

Loose Fit Utility Jean

Model No. **BD0013-M** SAP No. **B13**

FABRIC

- 11.75-ounce, 100% cotton washed denim

FEATURES

- Sits slightly above the waist
- Generous fit through the seat and thigh with the most room to move
- Multiple tool and utility pockets
- Left-leg hammer loop
- Stronger sewn-on-seam belt loops
- Heavy-hauling reinforced back pockets
- Straight leg opening fits over boots
- Imported
- *Prev. Name:* Straight Fit Tapered-Leg Jean



B13-DPS
Deepstone



B13-DST
Darkstone

WAIST SIZES 28" – 44"
BIG & TALL EVEN WAIST SIZES 46" – 54"

EVEN INSEAMS 28" – 36"
EVEN INSEAMS 30" – 32"

Rugged Flex® Relaxed Fit Canvas Work Pant

Model No. **BN2291-M** SAP No. **102291**

FABRIC

- 8.5-ounce, 98% cotton / 2% spandex canvas

FEATURES

- Rugged Flex® durable stretch technology for ease of movement
- Sits slightly below the waist
- Comfortable fit through the seat and thigh with more room to move
- Reinforced front slash pocket
- Stronger sewn-on-seam belt loops
- Right-leg secured cell phone pocket
- Straight leg opening
- Imported
- *Prev. Name:* Rugged Flex® Rigby Dungaree

MATCHING WOMEN'S STYLE AVAILABLE IN SELECT COLORS



102291-039
Gravel



102291-253
Dark Khaki



102291-412
Navy



WAIST SIZES 28" – 44"
BIG & TALL EVEN WAIST SIZES 46" – 54"

EVEN INSEAMS 28" – 36"
EVEN INSEAMS 30" – 32"

Rugged Flex® Relaxed Fit Canvas 5-Pocket Work Pant

Model No. **BN2517-M** SAP No. **102517**

FABRIC

- 8.5-ounce, 98% cotton/2% spandex canvas

FEATURES

- Rugged Flex® durable stretch technology for ease of movement
- Sits slightly below the waist
- Comfortable fit through the seat and thigh with more room to move
- Stronger sewn-on-seam belt loops
- Right-leg secured cell phone pocket
- Straight leg opening
- Imported
- *Prev. Name:* Rugged Flex® Rigby Five-Pocket Pant

NEW



102517-039
Gravel



102517-DKH
Dark Khaki



102517-126
Navy



WAIST SIZES 28" – 44"
BIG & TALL EVEN WAIST SIZES 46" – 54"

EVEN INSEAMS 28" – 36"
EVEN INSEAMS 30" – 32"

Rugged Flex® Relaxed Fit Canvas Cargo Work Pant

Model No. **BN3574-M** SAP No. **103574**

FABRIC

- 8.5-ounce, 98% cotton / 2% spandex canvas

FEATURES

- Rugged Flex® durable stretch technology for ease of movement
- Sits slightly below the waist
- Comfortable fit through the seat and thigh with more room to move
- Right-leg cargo pocket with secure cell phone storage
- Left-leg cargo pocket with utility pocket
- Hidden hook and loop closures on cargo and back pocket flaps
- Stronger sewn-on-seam belt loops
- Straight leg opening
- Imported
- *Prev. Name:* Rugged Flex® Rigby Cargo Pant



103574-029
Shadow



103574-253
Dark Khaki

103574-412
Navy



103574-BLK
Black



WAIST SIZES 30" – 34", 36" – 44"

EVEN INSEAMS 30" – 36"

Rugged Professional™ Series Rugged Flex® Relaxed Fit Canvas Work Pant

Model No. **BN3109-M** SAP No. **103109**

FABRIC

- 8-ounce, Rugged Flex® Canvas: 59% cotton / 39% polyester / 2% Spandex

FEATURES

- Rugged Flex® durable stretch technology for ease of movement
- Superior colorfastness
- Stain Breaker® technology and wrinkle-resistance for easy care
- Generous front pockets with extra-large coin pocket on right side
- Cell-phone pocket on right side
- Rear patch pockets with reinforcements
- #5 YKK metal zipper
- Triple stitched out-seams for durability

MATCHING WOMEN'S STYLE AVAILABLE



103109-001
Black



103109-029
Shadow

103109-253
Dark Khaki



103109-412
Navy



WAIST SIZES 30" – 44"
BIG & TALL EVEN WAIST SIZES 46" – 54"

EVEN INSEAMS 30" – 36"
EVEN INSEAMS 30" – 34"

Loose Fit Canvas Utility Work Pant			
Model No.	BN0151-M	SAP No.	B151
FABRIC <ul style="list-style-type: none"> 7.5-ounce, 100% cotton ring spun canvas FEATURES <ul style="list-style-type: none"> Sits slightly above the waist Generous fit through the seat and thigh with the most room to move Multiple tool and utility pockets Left-leg hammer loop Right-leg utility band Stronger sewn-on-seam belt loops Heavy hauling reinforced back pockets Straight leg opening Imported Prev. Name: Canvas Work Dungaree 			
WAIST SIZES 28" – 44" BIG & TALL EVEN WAIST SIZES 46" – 54"		EVEN INSEAMS 30" – 36" EVEN INSEAMS 30" – 32"	



B151-BLK
Black



B151-DKH
Dark Khaki



B151-NVY
Navy



B151-TAN
Tan

Loose Fit Washed-Duck Utility Work Pant

Model No. **BN0011-M** SAP No. **B11**

FABRIC

- 12-ounce, 100% ring spun cotton duck

FEATURES

- Sits slightly above the waist
- Generous fit through the seat and thigh with the most room to move
- Multiple tool and utility pockets
- Left-leg hammer loop
- Stronger sewn-on-seam belt loops
- Heavy hauling reinforced back pockets
- Straight leg opening
- Imported
- *Prev. Name:* Washed-Duck Work Dungaree



B11-BRN
Carhartt Brown



B11-MDT
Midnight



B11-BLK
Black

WAIST SIZES 28" – 34", 36" – 44"
BIG & TALL EVEN WAIST SIZES 46" – 50"

EVEN INSEAMS 30" – 36"
EVEN INSEAMS 30" – 32"

Loose Fit Washed-Duck Double-Front Utility Work Pant

Model No. **BN0136-M** SAP No. **B136**

FABRIC

- 12-ounce, 100% cotton ring spun washed duck

FEATURES

- Sits slightly above the waist
- Generous fit through the seat and thigh with the most room to move
- Double front with cleanout openings that accommodate knee pads
- Multiple tool and utility pockets
- Left-leg hammer loop
- Stronger sewn-on-seam belt loops
- Heavy hauling reinforced back pockets
- Straight leg opening
- Imported
- *Prev. Name:* Washed Duck Double-Front Work Dungaree



B136-BLK
Black



B136-BRN
Carhartt Brown

WAIST SIZES 30" – 34", 36" – 44"

EVEN INSEAMS 30 – 36"

Rugged Flex® Relaxed Fit Canvas Utility Work Short

Model No. **BS3652-M** SAP No. **103652**

FABRIC

- 8.5-ounce, 98% cotton / 2% spandex canvas

FEATURES

- Rugged Flex® durable stretch technology for ease of movement
- Sits at the waist
- Comfortable fit through the seat and thigh with more room to move
- Multiple tool and utility pockets
- Left-leg hammer loop
- Stronger sewn-on-seam belt loops
- 11-inch inseam
- Imported
- *Prev. Name:* Rugged Flex® Rigby Work Short



103652-253
Dark Khaki

103652-412
Navy



WAIST SIZES 30" – 34", 36" – 44"

Rugged Flex® Relaxed Fit Canvas Cargo Work Short

Model No. **BS3542-M** SAP No. **103542**

FABRIC

- 8.5-ounce, 98% cotton / 2% spandex canvas

FEATURES

- Rugged Flex® durable stretch technology for ease of movement
- Sits at the waist
- Comfortable fit through the seat and thigh with more room to move
- Left-leg cargo pocket with secure cell phone storage
- Right-leg cargo pocket with utility pocket
- Hidden hook and loop closures on cargo and back pocket flaps
- Stronger sewn-on-seam belt loops
- 11-inch inseam
- Imported
- *Prev. Name:* Rugged Flex® Rigby Cargo Short



103542-253
Dark Khaki

103542-029
Shadow

103542-412
Navy

103542-BLK
Black



WAIST SIZES 28" – 34", 36" – 44"
BIG & TALL EVEN WAIST SIZES 46" – 54"

**Rugged Professional™ Series Rugged Flex®
Relaxed Fit Canvas Work Short**

Model No.	BS3111-M	SAP No.	103111
-----------	----------	---------	--------

- FABRIC**
- 8-ounce, Rugged Flex® Canvas: 59% cotton / 39% polyester / 2% Spandex
- FEATURES**
- Rugged Flex® durable stretch technology for ease of movement
 - Superior colorfastness
 - Stain Breaker® technology and wrinkle-resistance for easy care
 - Generous front pockets with extra-large coin pocket on right side
 - Cell-phone pocket on right side
 - Rear patch pockets with reinforcements
 - #5 YKK metal zipper
 - Triple stitched out-seams for durability
 - 10-inch inseam
 - Imported
- MATCHING WOMEN'S STYLE AVAILABLE**



103111-001
Black



103111-029
Shadow



103111-253
Dark Khaki



103111-412
Navy



WAIST SIZES 30" – 44"
BIG & TALL EVEN WAIST SIZES 46" – 50"



MEN'S OUTERWEAR

**THERE'S NO MATCH FOR CARHARTT WARMTH
OR THE PRODUCTIVITY IT EMPOWERS**

KNIT SHIRTS

WEATS

WOVEN SHIRTS

WORK JEANS, PANTS & SHORTS

RAINWEAR & OUTERWEAR

ACCESSORIES

WORK BOOTS

WOMEN'S GEAR

FR

FR-WOMEN'S

HI-VIS

LICENSEES

ADDITIONAL INFO



BACK YOUR TEAM WITH OUR PROVEN RAIN-FIGHTING TECHNOLOGY

Rain Defender® durable water repellent (DWR) sheds wind, cold, and steady rain to give your crew the protection they need to meet wet workdays head on.



Storm Defender® waterproof breathable technology keeps water from getting in but allows sweat and condensation to get out. It's built to conquer the heaviest downpours, and the toughest jobs in the forecast.



Storm Defender® Loose Fit Heavyweight Jacket

Model No. **0J4670-M** SAP No. **104670**

FABRIC

- 7.3 oz, 100% nylon shell
- Polyester mesh-lining in body for breathability
- Taffeta sleeve and hood lining for easy on/off

FEATURES

- Storm Defender® waterproof, breathable technology stops water from getting in but lets sweat get out
- 10K/10K waterproof breathability rating
- Wind Fighter® technology tames the wind
- Fully-taped waterproof seams
- Polyester mesh-lining in body for breathability
- Taffeta sleeve and hood lining for easy on/off
- Two-way, full-zip front with inner and outer storm flaps to keep water out
- Left chest pocket with secure waterproof zipper and storm flap to keep water out
- Two secure zippered lower pockets with storm flaps
- Hook-and-loop cuffs with inner storm cuffs for added protection
- Adjustable, removable roll-away hood
- Two inner hook-and-loop pockets
- Adjustable, drop-tail hem for added protection
- Replaces J162

MATCHING WOMEN'S STYLE AVAILABLE IN SELECT COLORS

NEW



104670-029
Shadow



104670-BLK
Black



104670-126
Navy



REGULAR S M L XL 2XL

BIG 3XL 4XL

TALL L XL 2XL 3XL

Storm Defender® Loose Fit Heavyweight Pant

Model No. **0B4675-M** SAP No. **104675**

FABRIC

- 7.3-ounce, 100% nylon

FEATURES

- Storm Defender® waterproof, breathable technology stops water from getting in but lets sweat get out
- 10K/10K waterproof breathability rating
- Wind Fighter® technology tames the wind
- Fully-taped waterproof seams
- Mesh upper leg lining for increased breathability
- Adjustable waist with hook-and-loop side adjusters
- Full-zip front with two button closure
- Secure zippered pockets with storm flap
- Adjustable leg opening with ankle-to-knee zippers
- Knee pad compatible
- Drop-in back pocket with storm flap and drain vents
- Replaces B216

NEW



104675-BLK
Black



REGULAR S M L XL 2XL

BIG 3XL

SHORT M L XL 2XL

TALL L XL 2XL

Rain Defender® Relaxed Fit Lightweight Jacket

Model No. **OJ4671-M** SAP No. **104671**

FABRIC

- 3-ounce, 100% nylon
- Polyester mesh-lining body for breathability
- Taffeta sleeve lining for easy on-and-off

FEATURES

- Rain Defender® durable water repellent (DWR) keeps you dry and moving in light rain
- Full-zip front with kissing welt construction for protection
- Adjustable hood and drawcord hem
- Secure zipper chest pocket
- Two secure zipper lower pockets
- Two internal pockets: one drop-in, one with secure zipper
- Hook-and-loop adjustable cuffs
- Replacing 100247

NEW



104671-N04
Black



REGULAR S M L XL 2XL

BIG 3XL 4XL

TALL L XL 2XL 3XL

Rain Defender® Relaxed Fit Lightweight Insulated Jacket

Model No. **OJ2208-M** SAP No. **102208**

FABRIC

- 1.8-ounce, 100% nylon Cordura® shell with Rain Defender® durable water repellent

FEATURES

- Nylon lining quilted to 100g polyester insulation
- Wind Fighter® technology tames the wind
- Mock-neck collar
- Left-chest map pocket
- Two lower-front pockets
- Two inside pockets; one with zipper closure and one with hook and loop closure
- Lower pockets have hidden snap closure
- Hook-and-loop adjustable cuffs
- Drawcord adjustable hem
- Triple-stitched main seams
- Droptail hem
- Back length: Large Regular: 29 inches; Large Tall: 31 inches
- Imported
- Prev. Name: Gilliam Jacket

**MATCHING WOMEN'S STYLE AVAILABLE IN
SELECT COLORS**



102208-001
Black



102208-029
Shadow



102208-I26
Navy



102208-MOS
Moss



REGULAR S M L XL 2XL

BIG 3XL

TALL L XL 2XL

Rain Defender® Relaxed Fit Lightweight Insulated Vest

Model No. OV2286-M SAP No. 102286

FABRIC

- 1.8-ounce, 100% nylon Cordura® shell with Rain Defender® durable water repellent

FEATURES

- Nylon lining quilted to 100g polyester insulation
- Wind Fighter® technology tames the wind
- Mock-neck collar
- Left-chest map pocket
- Two lower-front pockets
- Two inside pockets; one with zipper closure and one with hook and loop closure
- Lower pockets have hidden snap closure
- Drawcord adjustable hem
- Triple-stitched main seams
- Droptail hem
- Back length: Large Regular: 29 inches; Large Tall: 31 inches
- Imported
- Prev. Name: Gilliam Vest

MATCHING WOMEN'S STYLE AVAILABLE IN SELECT COLORS



102286-001
Black



102286-029
Shadow



102286-126
Navy



102286-MOS
Moss



REGULAR S M L XL 2XL

BIG 3XL

TALL L XL 2XL

Rain Defender® Relaxed Fit Heavyweight Softshell Jacket

Model No. OJ2199-M SAP No. 102199

FABRIC

- 13.9-ounce, 90% nylon / 10% spandex with 100% polyester backing

FEATURES

- Rain Defender® durable water repellent
- Wind Fighter™ technology tames the wind
- Rugged Flex® technology for ease of movement
- Mock-neck collar
- Center-front zipper with chin protector
- Left-chest pocket
- Two lower-front pockets with zipper closures
- Large interior document pocket
- Hook-and-loop adjustable cuffs
- Adjustable drawcord bottom hem
- Droptail
- Triple-stitched main seams
- Back Length: Large Regular: 29 inches; Large Tall: 31 inches
- Imported
- Prev. Name: Crowley Jacket



102199-001
Black



102199-022
Charcoal



102199-412
Navy



102199-MOS
Moss



REGULAR S M L XL 2XL

BIG 3XL 4XL 5XL

TALL L XL 2XL 3XL 4XL

Full Swing® Loose Fit Quick Duck Insulated Jacket

Model No. **OJ2207-M** SAP No. **102207**

FABRIC

- 8.5-ounce, 59% cotton / 39% polyester / 2% spandex Quick Duck® canvas

FEATURES

- 80g 3M™ Thinsulate™ Insulation
- Full Swing® gear is built broken-in to help you move like you mean it 24/7
- Rain Defender® durable water repellent (DWR)
- Built to move with Rugged Flex® stretch technology
- Triple-stitched main seams
- Mock-neck collar with full two-way zip front and inner storm flap
- Detachable hood
- Internal rib-knit storm cuffs with ergonomically shaped sleeve hems; Drawcord-adjustable droptail hem for added coverage
- Two chest zip pockets; Two hand pockets with hidden snap closure
- Back length: Large regular: 29.5"; Large tall: 31.5"
- Imported
- Prev. Name: Full Swing® Cryder Jacket



102207-029
Shadow



102207-BLK
Black

MADE WITH
3M THINSULATE™
Insulation



REGULAR S M L XL 2XL

BIG 3XL

TALL L XL 2XL

Loose Fit Washed Duck Insulated Active Jac

Model No. **J130-M** SAP No. **104050**

FABRIC

- 12-ounce, 100% ringspun cotton washed duck

FEATURES

- Nylon lining quilted to 80g 3M™ Thinsulate™ insulation in body, sleeves, and hood
- Attached hood with low profile adjustment at hood hem
- Updated lower front pockets with brushed tricot lining and reinforced bottoms
- Pen stall in wearer's right, lower front pocket
- Two interior pockets
- Cordura®-reinforced sleeve hem with interior rib-knit storm cuffs
- Elbow pleats for ease of movement
- Triple-stitched main seams
- Back Length: Large Regular: 28 1/2 inches
- Imported
- Replaces J130
- Prev. Name: Washed Duck Insulated Active Jac

MATCHING WOMEN'S STYLE AVAILABLE IN SELECT COLORS



104050-BLK
Black



104050-BRN
Carhartt Brown



104050-I26
Navy



104050-GVL
Gravel

REGULAR S M L XL 2XL

BIG 3XL 4XL 5XL

TALL M L XL 2XL 3XL 4XL

Loose Fit Washed Duck Sherpa-Lined Coat			
Model No.	OC4293-M	SAP No.	104293
FABRIC · 12-ounce, 100% ring spun cotton washed duck FEATURES · Sherpa lining in body, quilted-nylon lining in sleeve · Contrasting color collar with under-collar snaps for optional hood · Left-chest pocket with zipper closure · Two lower-front pockets · Two inside pockets · Pleated elbows · Inner-sleeve, rib-knit storm cuffs · Split-back construction · Pleated bi-swing back · Triple-stitched main seams · Back length: Large Regular: 31 inches; Large Tall: 33 inches · Replaces C61- Imported · <i>Prev. Name:</i> Washed Duck Sherpa-Lined Coat			
<div>REGULAR</div> <div>S</div> <div>M</div> <div>L</div> <div>XL</div> <div>2XL</div>			



104293-BLK
Black



104293-BRN
Carhartt Brown



104293-GVL
Gravel

REGULAR S M L XL 2XL

BIG 3XL 4XL

TALL L XL 2XL 3XL

Relaxed Fit Washed Duck Sherpa-Lined Jacket			
Model No.	OJ4392-M	SAP No.	104392
FABRIC · 12-ounce, 100% ring spun cotton washed duck FEATURES · Sherpa body lining; Quilted nylon sleeve lining · Attached sherpa-lined hood with hidden drawcord · Pleated elbows · Inner rib-knit storm cuffs · Pleated, bi-swing split back · Left-chest pocket with zipper closure · Two inside pockets · Two sherpa-lined lower-front pockets Back length: Large Regular: 28"; Large Tall: 30" · Replaces J141 · Imported · <i>Prev. Name:</i> Sierra Jacket			
<div>REGULAR</div> <div>S</div> <div>M</div> <div>L</div> <div>XL</div> <div>2XL</div>			

NEW



104392-BLK
Black



104392-BRN
Carhartt Brown

REGULAR S M L XL 2XL

BIG 3XL 4XL

TALL L XL 2XL 3XL

Loose Fit Washed Duck Sherpa-Lined Mock-Neck Vest

Model No. **OV4277-M** SAP No. **104277**

FABRIC

- 12-ounce, 100% ringspun cotton washed duck

FEATURES

- Sherpa lining
- Triple-stitched main seams
- Droptail hem for added coverage
- Zip map pocket
- Two lower-front pockets
- Two inner pockets
- Back length: 25"
- Replaces V33
- Imported

MATCHING WOMEN'S STYLE AVAILABLE IN SELECT COLORS



104277-BLK
Black



104277-BRN
Carhartt Brown



104277-I26
Navy



104277-GVL
Gravel

REGULAR S M L XL 2XL

BIG 3XL 4XL 5XL

TALL M L XL 2XL 3XL 4XL

Loose Fit Washed Duck Insulated Rib Collar Vest

Model No. **OV4395-M** SAP No. **104395**

FABRIC

- 12-ounce, 100% ringspun cotton washed duck

FEATURES

- Quilted nylon lining
- 80g 3M™ Thinsulate™ insulation
- Triple-stitched main seams
- Center-front zipper with inner storm flap
- Droptail hem
- Two large lower-front pockets
- Inner hook-and-loop pocket
- Back length: Large Regular: 27"; Large Tall: 29"
- Replaces V02
- Imported
- *Prev. Name:* Washed Duck Insulated Rib Collar Vest

NEW



104395-BLK
Black



104395-BRN
Carhartt Brown

MADE WITH
3M THINSULATE™
Insulation

REGULAR S M L XL 2XL

BIG 3XL 4XL

TALL L XL 2XL 3XL

Washed Duck Insulated Hood

Model No. **0H4244-M** SAP No. **104244**

FABRIC

- 12-ounce, 100% ringspun cotton washed duck

FEATURES

- Quilted-nylon lining
- Three-piece hood construction
- Draw cord adjustable with cord lock
- Fits all duck styles with under collar snaps
- Triple-stitched main seams
- Imported
- Prev. Name:* Washed Duck Flannel-Lined Hood

SIZES

S-XL and 2XL-5XL

NEW



104244-BRN
Carhartt Brown



104244-BLK
Black



104244-GVL
Gravel

Loose Fit Firm Duck Insulated Traditional Coat

Model No. **0C0003-M** SAP No. **C003**

FABRIC

- 12-ounce, firm-hand, 100% ringspun cotton duck

FEATURES

- Nylon lining quilted to arctic-weight-polyester insulation
- Corduroy-trimmed collar with under-collar snaps for optional hood
- Two-way brass center-front zipper plus storm flap with hook-and-loop closure
- Two chest pockets with flap and hook-and-loop closure
- Two inside pockets
- Two large lower-front pockets
- Pleated elbows
- Inner-sleeve, rib-knit storm cuffs
- Split-back construction
- Pleated bi-swing back
- Triple-stitched main seams
- Back length: Large Regular: 31.25 inches; Large Tall: 33.25 inches
- Imported
- Prev. Name:* Firm Duck Traditional Coat



C003-BLK
Black



C003-BRN
Carhartt Brown



C003-DNY
Dark Navy

REGULAR S M L XL 2XL

BIG 3XL 4XL

TALL L XL 2XL 3XL

Loose Fit Firm Duck Insulated Flannel-Lined Active Jac

Model No. **OJ0140-M** SAP No. **J140**



FABRIC

- 12-ounce, firm-hand, 100% ringspun cotton duck

FEATURES

- Quilted-flannel lining in body, quilted-nylon lining in sleeves
- Attached quilted-flannel-lined hood with drawcord closure
- Two inside pockets
- Two large lower-front pockets
- Rib-knit cuffs and waistband
- Triple-stitched main seams
- Back length: Large Regular: 29 inches; Large Tall: 31 inches
- Made in the USA of US and imported parts
- *Prev. Name:* Quilt-Flannel-Lined Firm Duck Active Jac



J140-BLK
Black



J140-BRN
Carhartt Brown



J140-DNY
Dark Navy

REGULAR S M L XL 2XL

BIG 3XL 4XL 5XL

TALL M L XL 2XL 3XL 4XL

Firm Duck Insulated Hood

Model No. **0H2368-M** SAP No. **102368**

FABRIC

- 12-ounce, firm-hand, 100% ringspun cotton duck

FEATURES

- Nylon lining quilted to arctic-weight polyester insulation
- Hook-and-loop chin strap closure
- Hook-and-loop adjustable front opening
- Adjustable draw cord with cord lock
- Three-piece hood construction
- Triple-stitched main seams
- Imported
- *Prev. Name:* Arctic Quilt-Lined Firm Duck Hood

SIZES

S-XL and 2XL-5XL



102368-211
Carhartt Brown



102368-001
Black



102368-410
Dark Navy

Relaxed Fit Duck Bib Overall

Model No. R01-M SAP No. 102776

FABRIC

- 12-ounce, 100% cotton ring spun duck

FEATURES

- Adjustable front elastic suspenders with webbing slider on straps
- Updated bib pocket style holds electronics securely
- Stretch side panels for more precise fit
- Ledge pockets
- Double back pockets
- Updated chap front for protection and comfort
- Kick panels
- Ruler pocket on wearers left side
- Hammer loop on right side
- True fit
- Triple-stitched main seams
- Metal rivets at vital stress points
- Replaces R01
- Imported
- Prev. Name: Duck Bib Overalls



102776-001
Black



102776-211
Carhartt Brown



102776-412
Navy

WAIST SIZES 28" – 44"
BIG & TALL EVEN WAIST SIZES 46" – 54"

EVEN INSEAMS 28" – 36"
EVEN INSEAMS 28" – 34"

Loose Fit Firm Duck Insulated Bib Overall

Model No. OR4393-M SAP No. 104393

FABRIC

- 12-ounce, firm-hand, 100% ring-spun cotton duck

FEATURES

- Quilted Nylon Lining
- Midweight Polyester Insulation
- Adjustable front-elastic suspenders
- Updated multi-compartment bib pocket with zipper closure
- Zipper Fly
- Two large lower-front pockets
- Hammer loop on the wearers right leg
- Seam-to-seam chap style double front construction
- Double front knee construction with bottom cleanouts that can accommodate knee pads
- Ankle-to-thigh leg zippers with storm flaps and snap closures
- Reinforced kick panels
- Two reinforced back pockets
- Triple stitched main seams
- Metal rivets vital at stress points
- Replaces R41
- Imported

MATCHING WOMEN'S STYLE AVAILABLE IN SELECT COLORS



104393-BLK
Black



104393-BRN
Carhartt Brown

NEW



104393-DNY
Dark Navy

REGULAR S – 2XL

BIG 3XL – 5XL

SHORT M – 2XL

SHORT BIG 3XL 4XL

TALL M – 4XL

Rugged Flex® Canvas Coverall				
Model No.	OX5019-M	SAP No.	105019	
<p>FABRIC</p> <ul style="list-style-type: none">· 6.5-ounce 98% Cotton / 2% Spandex Stretch Canvas <p>FEATURES</p> <ul style="list-style-type: none">· Rugged Flex® stretch technology for ease of movement· Two-way front zipper with storm flap· Two secure chest pockets with flaps and hook & loop closure· Comfort flex waistband for increased comfort· Back yoke with pleats for ease of movement· Multiple utility pockets for added storage· Adjustable sleeve cuff with snap closure· Ankle-to-knee leg opening with hook & loop closure fits over boots· Two side-entry pass-through pockets with snap closures· Imported				
<div><div><div></div><div><p>105019-I26 Navy</p></div></div><div><div><p>105019-GVL Gravel</p></div><div><p>105019-DKH Dark Khaki</p></div></div><div></div></div>				
REGULAR	S - 2XL	BIG	3XL - 5XL	SHORT M - 2XL
SHORT BIG		3XL - 4XL		TALL M - 4XL



ACCESSORIES

**CARHARTT HAS THE ACCESSORIES TO KEEP
YOUR CREW COVERED IN ANY CONDITION**

Knit Shirts

Sweats

Woven Shirts

Work Jeans, Pants & Shorts

Rainwear & Outerwear

Accessories

Work Boots

Women's Gear

FR

FR-Women's

Hi-Vis

Licenses

Additional Info

Knit Cuffed Beanie

Model No.	A18-M	SAP No.	A18
-----------	-------	---------	-----

FABRIC

- 100% acrylic, stretchable rib-knit fabric

FEATURES

- Carhartt label sewn on front
- Imported
- *Prev. Name:* Acrylic Watch Hat

ONE SIZE FITS ALL



A18-BLK
Black



A18-BLM
Brite Lime



A18-BOG
Brite Orange



A18-BRN
Carhartt Brown



A18-CLH
Coal Heather



A18-HGY
Heather Grey



A18-NVY
Navy

Fleece 2-in-1 Hat

Model No.	AH202-M	SAP No.	A202
-----------	---------	---------	------

FABRIC

- 100% polyester fleece

FEATURES

- 92% polyester/8% spandex face mask with Fast Dry® technology to wick away sweat for comfort
- Mask can be tucked up into hat when not in use
- Carhartt label sewn on front
- Imported

ONE SIZE FITS ALL



A202-BLK
Black



A202-BLM
Brite Lime



A202-BOG
Brite Orange



A202-CHH
Charcoal Heather



A202-DKB
Dark Brown



A202-412
Navy



Force Helmet Liner

Model No.	AH0267-M	SAP No.	A267
-----------	----------	---------	------

FABRIC

- 92% polyester / 8% spandex blend with fleeced
- interior for comfort and warmth

FEATURES

- Carhartt Force® fabric with FastDry® technology wicks away sweat for comfort
- Fights odor
- Full-facial protection that extends below the neckline
- Face mask pulls down below the chin when not needed
- Flat-seam construction enhances comfort
- Carhartt logo printed on front
- Imported

ONE SIZE FITS ALL



A267-BLK
Black



A267-029
Shadow



Force Extremes® Knit Neck Gaiter

Model No.	AH5221-M	SAP No.	105221
-----------	----------	---------	--------

FABRIC

- 95% polyester / 5% elastane jersey

FEATURES

- Built with Force technology to wick sweat, dry fast, and fight odors
- FastDry® technology keeps you cool for all day comfort
- Stain Breaker® technology releases stains
- Fitted to provide coverage from the wearer's nose to neckline
- Bungee with adjustable cordlock at back for comfort
- Interior drop in pocket at front for filter
- Flat-seam construction for comfort
- Carhartt logo on side
- UPF 50+
- Imported

ONE SIZE FITS ALL

Fits filter size: 12 x 8 cm/4.7 x 3.1 inches.
(Filter Not Included)

NEW



105221-BLM
Brite Lime



Canvas Mesh-Back Cap

Model No.	AH5298-M	SAP No.	105298
-----------	----------	---------	--------

- FABRIC**
- 100% cotton washed canvas with 100% polyester mesh back
- FEATURES**
- Carhartt Force® sweatband fights odors and FastDry® technology wicks away sweat for comfort
 - Structured, medium profile cap with pre-curved visor
 - Adjustable fit with plastic closure
 - Carhartt label sewn on side
 - Imported
- ONE SIZE FITS ALL

NEW



105298-029
Shadow



105298-BLK
Black



105298-126
Navy



105298-BRN
Carhartt Brown



105298-MOS
Moss



Canvas Cap

Model No.	AH3938-M	SAP No.	103938
-----------	----------	---------	--------

- FABRIC**
- 100% cotton washed canvas
- FEATURES**
- Carhartt Force® sweatband fights odors and FastDry® technology wicks away sweat for comfort
 - Light-structured, medium-profile cap with pre-curved visor
 - Adjustable fit with hook-and-loop closure
 - Carhartt label sewn on side
 - Carhartt embroidered on back closure
 - Imported
- ONE SIZE FITS ALL



103938-001
Black



103938-211
Carhartt Brown



103938-039
Gravel



103938-412
Navy



Rugged Professional™ Series Canvas Mesh Back Cap

Model No.	AH3056-M	SAP No.	103056
-----------	----------	---------	--------

FABRIC

- 8-ounce, Rugged Flex® Canvas: 59% cotton/39% polyester/2% spandex

FEATURES

- 100% polyester mesh back
- Carhartt Force® sweatband fights odors and Fastdry® wicks moisture
- Adjustable fit with plastic closure
- Imported

ONE SIZE FITS ALL







WORKWEAR GOES HAND IN HAND WITH EMPLOYEE SATISFACTION AND RETENTION.

EVERYONE DOES A BETTER JOB WEARING GEAR THAT FITS RIGHT, HAS PLENTY OF ROOM, AND IS BUILT FOR THE CONDITIONS AND THE JOB AT HAND.

Employees are grateful and more committed to the employer who provides that gear. For centuries, military leaders have known that smart, functional dress translates to esprit de corps. And the same applies to work crews.

Each day crew members dress for work, they're reminded the company values them enough to provide high-quality gear. That pride inevitably shows in the quality of their work. It instills a sense of pride, so they're willing to work harder and smarter, and they're far less likely to leave the company.

Experience across a wide range of industries indicates a direct correlation between the quality of employee workwear and employee retention over time. Until such a study is conducted, savvy employers are putting their money where it can do the most good for their bottom line – squarely on the backs of their workers.



WOMEN'S GEAR

**BUILT EXCLUSIVELY FOR
WOMEN WHO GET IT DONE**

Loose Fit Heavyweight Short-Sleeve Pocket T-Shirt

Model No. K87-W SAP No. 103067

FABRIC

- 6.75-ounce
- Solids: 100% cotton jersey
- Heather Gray: 90% cotton / 10% polyester

FEATURES

- Rib-knit crewneck and cuffs
- Side-seamed construction minimizes twisting
- Left-chest pocket with sewn-on Carhartt label
- Tagless neck label
- Imported
- *Prev. Name:* WK87 Workwear Pocket Short-Sleeve T-Shirt

MATCHING MEN'S STYLE AVAILABLE



103067-001
Black



103067-034
Heather Gray



103067-412
Navy



103067-BLM
Brite Lime

REGULAR XS S M L XL XXL

PLUS 1X 2X 3X

Loose Fit Heavyweight Long-Sleeve Pocket T-Shirt

Model No. TK0126-W SAP No. 103244

FABRIC

- 6.75-ounce
- Solids: 100% cotton jersey
- Heather Gray: 90% cotton / 10% polyester

FEATURES

- Rib-knit crewneck and cuffs
- Side-seamed construction minimizes twisting
- Left-chest pocket with sewn-on Carhartt label
- Tagless neck label
- Imported
- *Prev. Name:* WK126 Workwear Pocket Long-Sleeve T-Shirt

MATCHING MEN'S STYLE AVAILABLE



103244-001
Black



103244-034
Heather Gray



103244-412
Navy

REGULAR XS S M L XL XXL

PLUS 1X 2X 3X

Relaxed Fit Midweight Short-Sleeve Pocket Polo

Model No. **TK0570-W** SAP No. **104229**

FABRIC

- 6.75-ounce, 62% polyester/38% cotton pique

FEATURES

- Color-fast fabric with stain-release finish
- Stain Breaker® technology releases stains
- No-roll rib-knit collar
- Button front placket
- Left-chest Contractor's Work Pocket
- Princess seams for a flattering fit
- Drop-tail hem for added coverage
- Imported

MATCHING MEN'S STYLE AVAILABLE



104229-HGY
Heather Grey



104229-NVY
Navy



REGULAR XS S M L XL XXL

PLUS 1X 2X 3X

Relaxed Fit Midweight Full-Zip Sweatshirt

Model No. **TS0122-W** SAP No. **102788**

FABRIC

- 10.5-ounce, 55% cotton / 45% polyester

FEATURES

- Zip-front with attached three-piece hood
- Front handwarmer pockets
- Ribbed cuffs and waistband
- Imported
- *Prev. Name:* Clarksburg Full-Zip Hooded Sweatshirt

MATCHING MEN'S STYLE AVAILABLE



102788-001
Black



102788-412
Navy



102788-CRH
Carbon Heather

REGULAR XS S M L XL XXL

PLUS 1X 2X 3X

Relaxed Fit Midweight Quarter-Zip Mock Neck Sweatshirt

Model No. TS5295-W SAP No. 105295

FABRIC

- 10.5-ounce, 55% cotton, 45% polyester

FEATURES

- Mock neck collar
- Quarter-length zipper with storm flap
- Front handwarmer pockets
- Ribbed cuffs and waistband
- Imported

MATCHING MEN'S STYLE AVAILABLE

NEW



105295-412
Navy



105295-CRH
Carbon Heather

REGULAR XS S M L XL XXL

Rugged Professional™ Series Relaxed Fit Canvas Long-Sleeve Work Shirt

Model No. TW2538-W SAP No. 103106

FABRIC

- 5-ounce, Rugged Flex® Canvas: 58% cotton / 39%polyester / 3% Spandex

FEATURES

- Rugged Flex® durable stretch technology for ease of movement
- Long sleeves include adjustable cuffs and extended doghouse placket with button closure
- Triple-needle yoke and side seams
- Superior colorfastness
- Stain Breaker® technology and wrinkle-resistance for easy care
- Button-down collar dyed to match buttons
- Two chest pockets with button closure
- Left chest includes generous hidden map pocket with zip closure
- Durable mesh internal pocket
- Imported

MATCHING MEN'S STYLE AVAILABLE



103106-001
Black



103106-253
Dark Khaki



103106-412
Navy



REGULAR XS S M L XL XXL

Rugged Professional™ Series Relaxed Fit Canvas Short Sleeve Work Shirt

Model No. **TW2537-W** | SAP No. **103105**

FABRIC

- 5-ounce, Rugged Flex® Canvas: 58% cotton / 39%polyester / 3% Spandex

FEATURES

- Rugged Flex® durable stretch technology for ease of movement
- Triple-needle yoke and side seams
- Superior colorfastness
- Stain Breaker® technology and wrinkle-resistance for easy care
- Button-down collar dyed to match buttons
- Two chest pockets with button closure
- Left chest includes generous hidden map pocket with zip closure
- Durable mesh internal pocket
- Imported

MATCHING MEN'S STYLE AVAILABLE



103105-001
Black



103105-253
Dark Khaki



103105-412
Navy



REGULAR XS S M L XL XXL

Rugged Flex® Loose Fit Jean

Model No. **BD2731-W** | SAP No. **102731**

FABRIC

- 12-ounce, 98% cotton / 2% elastane stretch denim

FEATURES

- Easy fit through the hip and thigh
- Built to move with Rugged Flex® stretch technology
- Mid front rise; sits just below the waist
- Higher back rise for added coverage
- Straight leg opening
- Imported
- *Prev. Name:* Original Fit Blaine Jean

MATCHING MEN'S STYLE AVAILABLE



102731-470
Bluestone



REGULAR 2-18
PLUS 16W-26W

SHORT INSEAM 30"
REGULAR INSEAM 32"
TALL INSEAM 34"
PLUS INSEAM 31"

Rugged Flex® Loose Fit Canvas Work Pant			
Model No.	BN2080-W	SAP No.	102080
FABRIC · 8.5-ounce, 98% cotton / 2% elastane stretch canvas			
FEATURES · Built to move with Rugged Flex® stretch technology · Mid-rise; sits slightly below the waist · Easy fit through the hip and thigh · Utility pockets and hammer loop · Straight leg · Triple-stitched main seams · Imported · <i>Prev. Name:</i> Rugged Flex® Original Fit Crawford Pant			
MATCHING MEN'S STYLE AVAILABLE			



102080-DKH
Dark Khaki



102080-412
Navy



REGULAR 2-18
PLUS 16W-26W

SHORT INSEAM 30"
REGULAR INSEAM 32"
TALL INSEAM 34"
PLUS INSEAM 31"

Rugged Professional™ Series Rugged Flex® Loose Fit Canvas Work Pant			
Model No.	BN3109-W	SAP No.	103104
FABRIC · 8-ounce, Rugged Flex® Canvas: 59% cotton / 39% polyester / 2% spandex			
FEATURES · Rugged Flex® durable stretch technology for ease of movement · Superior colorfastness · Stain Breaker® technology and wrinkle-resistance for easy care · Generous front pockets with extra-large coin pocket on right side · Cell-phone pocket on right side · Rear patch pockets with reinforcements · #5 YKK metal zipper			
MATCHING MEN'S STYLE AVAILABLE			



103104-001
Black



103104-253
Dark Khaki



103104-412
Navy



103104-029
Shadow



REGULAR 2-18

SHORT INSEAM 30"
REGULAR INSEAM 32"
TALL INSEAM 34"

Rugged Professional™ Series Loose Fit Work Short

Model No. **BS3111-W** SAP No. **103103**

FABRIC

- 8-ounce, Rugged Flex® Canvas: 59% cotton / 39%polyester / 2% Spandex

FEATURES

- Rugged Flex® durable stretch technology for ease of movement
- Superior colorfastness
- Stain Breaker® technology and wrinkle-resistance for easy care
- Generous front pockets with extra-large coin pocket on right side
- Cell-phone pocket on right side
- Rear patch pockets with reinforcements
- #5 YKK metal zipper
- 10" Inseam
- Imported

MATCHING MEN'S STYLE AVAILABLE



103103-001
Black



103103-029
Shadow



103103-253
Dark Khaki



103103-412
Navy



REGULAR 2-16

Storm Defender® Relaxed Fit Heavyweight Jacket

Model No. **OJ2382-W** SAP No. **102382**

FABRIC

- 5.2-ounce, 100% nylon with Storm Defender® waterproof breathable membrane and Rain Defender® durable water repellent

FEATURES

- 10K/10K protection rating
- 100% polyester mesh lining in body and 100% nylon taffeta lining in sleeves
- Fully taped seams
- Detachable three-piece hood with drawcord and barrel lock adjusters
- Two-way zipper with snap-front storm placket
- Two front pockets with zipper closures, two lower-front pockets with flaps and snaps, zipper-secured side entry and two interior pockets
- Articulated elbows
- Hook-and-loop adjustable cuffs
- Interior storm cuffs with thumbholes
- Adjustable hem with drawcord and barrel lock adjusters
- Drop-tail adds coverage
- Triple-stitched main seams
- Back length: 31.5 inches
- Imported
- *Prev. Name:* Shoreline Jacket

MATCHING MEN'S STYLE AVAILABLE



102382-001
Black



REGULAR XS S M L XL XXL

PLUS 1X 2X 3X

Rain Defender® Relaxed Fit Lightweight Insulated Jacket

Model No. OJ2208-W SAP No. 104314

FABRIC

- 1.75-ounce, 100% nylon Cordura® shell with Rain Defender®

FEATURES

- Nylon lining quilted to 100 gram polyester insulation
- Wind Fighter® technology tames the wind
- Mock-neck collar
- Left-chest map pocket
- Two lower-front pockets
- Two inside pockets; one with zipper closure and one with hook-and-loop closure
- Lower pockets have hidden snap closure
- Hook-and-loop adjustable cuffs
- Drawcord adjustable hem
- Triple-stitched main seams
- Drop tail
- Back length: 27 inches
- Imported

MATCHING MEN'S STYLE AVAILABLE



104314-BLK
Black



104314-I26
Navy



REGULAR XS S M L XL XXL

Rain Defender® Relaxed Fit Lightweight Insulated Vest

Model No. OV2286-W SAP No. 104315

FABRIC

- 1.75-ounce, 100% nylon Cordura® shell with Rain Defender®

FEATURES

- Nylon lining quilted to 100 gram polyester insulation
- Wind Fighter® technology tames the wind
- Mock-neck collar
- Left-chest map pocket
- Two lower-front pockets
- Two inside pockets; one with zipper closure and one with hook-and-loop closure
- Lower pockets have hidden snap closure
- Drawcord adjustable hem
- Triple-stitched main seams
- Drop tail · Back length: Large Regular: 28 inches; Large Tall: 30 inches
- Imported

MATCHING MEN'S STYLE AVAILABLE



104315-N04
Black



104315-I26
Navy



REGULAR XS S M L XL XXL

Loose Fit Washed Duck Insulated Active Jac

Model No. **OJ130-W** SAP No. **104053**

FABRIC

- 12-ounce, 100% ringspun cotton washed duck
- Nylon lining quilted to 80g 3M™ Thinsulate™ insulation in body, sleeves, and hood

FEATURES

- Attached hood with low profile adjustment at hood hem
- Lower front pockets with brushed tricot lining and reinforced bottoms
- Pen stall on wearer's right lower front pocket
- Two interior pockets
- Cordura® reinforced sleeve hems with interior rib-knit storm cuffs
- Elbow pleats for ease of movement
- Triple-stitched main seams
- Back Length: 27.5 inches
- Replaces WJ130
- *Prev. Name:* Washed Duck Insulated Active Jac

MATCHING MEN'S STYLE AVAILABLE



104053-BRN
Carhartt Brown



104053-BLK
Black



104053-I26
Navy

MADE WITH
3M THINSULATE™
INSULATION

REGULAR XS S M L XL XXL

PLUS 1X 2X 3X

Loose Fit Washed Duck Sherpa-Lined Mock Neck Vest

Model No. **OV4277-W** SAP No. **104224**

FABRIC

- 12-ounce, 100% cotton washed duck

FEATURES

- Sherpa lining
- Zipper-secured chest map pocket, two lower-front pockets and two interior pockets
- Drop-tail adds coverage
- Triple-stitched main seams
- Back length: 25 inches
- Replaces WV001
- Imported
- *Prev. Name:* Washed Duck Sherpa-Lined Mock Vest

MATCHING MEN'S STYLE AVAILABLE



104224-211
Carhartt Brown



104224-BLK
Black

REGULAR XS S M L XL XXL

PLUS 1X 2X 3X

Relaxed Fit Washed Duck Insulated Bib Overall

Model No. **OR4031-W** SAP No. **104049**

FABRIC

- 12-ounce, 100% cotton ringpun washed duck

FEATURES

- Adjustable front-elastic suspenders with webbing slider on straps
- Bib pocket style holds electronics securely
- Stretch side panels for increased range of motion and comfort
- Ledge pockets
- Reinforced back pockets
- Double-front construction with cleanout bottoms that accommodate knee pads
- Cordura® reinforced 360° kick panels
- 3M™ Thinsulate™ insulation throughout legs
- Ankle-to-knee leg zippers
- Triple-stitched main seams
- Imported
- Prev. Name:* Quilt-Lined Washed Duck Bib Overall

MATCHING MEN'S STYLE AVAILABLE



MADE WITH
3M THINSULATE™
Insulation / Isolation

REGULAR XS S M L XL XXL

SHORT INSEAM 29"
REGULAR INSEAM 31"
TALL INSEAM 33"

FLAME RESISTANT

**MEETS NFPA-70E AND NFPA2112 PERFORMANCE
REQUIREMENTS – PLUS THE DURABILITY AND
COMFORT REQUIREMENTS OF YOUR CREW**

Flame Resistant Force Short-Sleeve T-Shirt		
Model No.	SAP No.	102903
<p>RELAXED FIT</p> <p>FABRIC</p> <ul style="list-style-type: none"> 6.5-ounce, 93% cotton / 7% spandex knit <p>FEATURES</p> <ul style="list-style-type: none"> Meets the performance requirements of NFPA 70E / ASTM F1506 UL® classified to NFPA 2112 Built with Force technology to wick sweat, dry fast, and fight odors FastDry® technology keeps you cool for all day comfort Spandex-reinforced rib-knit crewneck Side-seam construction minimizes twisting Carhartt FR and NFPA 2112 / CAT 2 labels sewn on side seam This product has been re-certified as a CAT 2 based on the 8.3CAL/CM² ATPV rating Imported 		
<div> <div>102903-410 Dark Navy</div> <div>102903-051 Light Gray</div> <div>102903-250 Khaki</div> </div>		
<div> <div>REGULAR S M L XL 2XL</div> <div>BIG 3XL 4XL</div> <div>TALL L XL 2XL 3XL</div> </div>		

Flame Resistant Force Long-Sleeve T-Shirt		
Model No.	SAP No.	102904
<p>RELAXED FIT</p> <p>FABRIC</p> <ul style="list-style-type: none"> 6.5-ounce, 93% cotton / 7% spandex knit <p>FEATURES</p> <ul style="list-style-type: none"> Meets the performance requirements of NFPA 70E / ASTM F1506 UL® classified to NFPA 2112 Built with Force technology to wick sweat, dry fast, and fight odors FastDry® technology keeps you cool for all day comfort Spandex-reinforced rib-knit crewneck Side-seam construction minimizes twisting Carhartt FR and NFPA 2112 / CAT 2 labels sewn on side seam This product has been re-certified as a CAT 2 based on the 8.3CAL/CM² ATPV rating Imported 		
<div> <div>102904-410 Dark Navy</div> <div>102904-051 Light Gray</div> <div>102904-250 Khaki</div> </div>		
<div> <div>REGULAR S M L XL 2XL</div> <div>BIG 3XL 4XL</div> <div>TALL L XL 2XL 3XL</div> </div>		

CAT 2
ATPV
(CAL/CM²)
8.3

ARC RATED
NFPA
70E
COMPLIANT

NFPA
2112
UL CERTIFIED

ASTM
F1506
CERTIFIED

CAT 2
ATPV
(CAL/CM²)
8.3

ARC RATED
NFPA
70E
COMPLIANT

NFPA
2112
UL CERTIFIED

ASTM
F1506
CERTIFIED


Flame Resistant Force Cotton Short-Sleeve T-Shirt

Model No.	SAP No.	100234
-----------	---------	--------

ORIGINAL FIT

FABRIC

- 6.75-ounce, FR jersey knit: 100% cotton

FEATURES

- Meets the performance requirements of NFPA 70E / ASTM F1506
- UL® classified to NFPA 2112
- Built with Force technology to wick sweat, dry fast, and fight odors
- FastDry® technology keeps you cool for all day comfort
- Rib-knit crewneck
- Side-seam construction minimizes twisting
- Carhartt FR and NFPA 2112 / CAT 2 labels sewn on pocket
- Left chest pocket
- Imported



100234-410
Dark Navy



100234-051
Light Gray

CAT 2
ATPV
(CAL/CM²)
8.9

APPROVED
NFPA
70E
COMPLIANT

NFPA
2112
UL CERTIFIED

ASTM
F1506
CERTIFIED



REGULAR S M L XL 2XL

BIG 3XL 4XL

TALL M L XL 2XL 3XL

Flame Resistant Force Cotton Long-Sleeve T-Shirt

Model No.	SAP No.	100235
-----------	---------	--------

ORIGINAL FIT

FABRIC

- 6.75-ounce, 100% cotton FR jersey knit

FEATURES

- Meets the performance requirements of NFPA 70E / ASTM F1506
- UL® classified to NFPA 2112
- Built with Force technology to wick sweat, dry fast, and fight odors
- FastDry® technology keeps you cool for all day comfort
- Rib-knit crewneck
- Side-seam construction minimizes twisting
- Carhartt FR and NFPA 2112 / CAT 2 labels sewn on pocket
- Left chest pocket
- Imported

MATCHING WOMEN'S STYLE AVAILABLE IN
SELECT COLORS



100235-410
Dark Navy



100235-051
Light Gray



100235-250
Khaki



100235-465
Medium Blue

CAT 2
ATPV
(CAL/CM²)
8.9

APPROVED
NFPA
70E
COMPLIANT

NFPA
2112
UL CERTIFIED

ASTM
F1506
CERTIFIED



REGULAR S M L XL 2XL

BIG 3XL 4XL

TALL M L XL 2XL 3XL

Flame Resistant Force Cotton Long-Sleeve Henley		
Model No.	SAP No.	100237
ORIGINAL FIT FABRIC · 6.75-ounce, 100% cotton FR jersey knit FEATURES · Meets the performance requirements of NFPA 70E / ASTM F1506 · UL® classified to NFPA 2112 · Built with Force technology to wick sweat, dry fast, and fight odors · FastDry® technology keeps you cool for all day comfort · Side-seam construction minimizes twisting · Rib-knit henley collar with three-button placket · Carhartt FR and NFPA 2112 / CAT 2 labels sewn on pocket · Left chest pocket · Imported		



100237-410
Dark Navy



100237-051
Light Gray



100237-250
Khaki

CAT 2
ATPV
(CAL/CM²)
8.9

ARC RATED
NFPA
70E
COMPLIANT

NFPA
2112
UL CERTIFIED

ASTM
F1506
CERTIFIED



REGULAR S M L XL 2XL

BIG 3XL 4XL

TALL M L XL 2XL 3XL

Flame Resistant Force Cotton Hybrid Shirt		
Model No.	SAP No.	101698
ORIGINAL FIT FABRIC · 6.75-ounce, 100% cotton FR jersey knit FEATURES · Meets the performance requirements of NFPA 70E / ASTM F1506 · UL® classified to NFPA 2112 · Built with Force technology to wick sweat, dry fast, and fight odors · FastDry® technology keeps you cool for all day comfort · Triple-stitched main seams · Side-seam construction minimizes twisting · Button down collar and front; Flame Resistant melamine buttons · Carhartt FR label sewn on left pocket; NFPA 2112 / CAT 2 label sewn on sleeve placket · Extended sleeve plackets with two-button adjustable cuffs · Two chest pockets with button closure · Imported MATCHING WOMEN'S STYLE AVAILABLE IN SELECT COLORS		



101698-410
Dark Navy



101698-250
Khaki



101698-465
Medium Blue



101698-051
Light Gray

CAT 2
ATPV
(CAL/CM²)
8.9

ARC RATED
NFPA
70E
COMPLIANT

NFPA
2112
UL CERTIFIED

ASTM
F1506
CERTIFIED



REGULAR S M L XL 2XL

BIG 3XL 4XL

TALL M L XL 2XL 3XL 4XL

Flame Resistant High-Visibility Force Long-Sleeve T-Shirt - Class 3

Model No. SAP No. 102905

ORIGINAL FIT

FABRIC

- 6.75-ounce, 48% modacrylic / 37% lyocell / 15% aramid pique knit

FEATURES

- Meets the performance requirements of NFPA 70E / ASTM F1506
- UL® classified to NFPA 2112
- Meets ANSI/ISEA 107 standard
- Meets ANSI Class 3, Type R visibility standard; 3M™ Scotchlite™ reflective material; Segmented trim (#5535) maintains performance through 65 home launderings
- Built with Force technology to wick sweat and dry fast
- FastDry® technology keeps you cool for all day comfort
- Stain Breaker® technology releases stains
- Rib-knit crewneck and cuffs
- Side-seam construction minimizes twisting
- Dark navy colorblocking in high-wear areas
- Left chest pocket
- Imported



102905-323
Brite Lime

CAT 2
ATPV
(CAL/CM²)
8.2

ARC RATED
NFPA
70E
COMPLIANT

NFPA
2112
UL CERTIFIED

ASTM
F1506
CERTIFIED

ANSI
CLASS
TYPE R
3



REGULAR M L XL 2XL

BIG 3XL 4XL

TALL M L XL 2XL 3XL

Flame Resistant High-Visibility Force Hybrid Shirt - Class 3

Model No. SAP No. 102843

ORIGINAL FIT

FABRIC

- 6.75-ounce, pique knit: 48% modacrylic / 37% lyocell / 15% aramid

FEATURES

- Meets the performance requirements of NFPA 70E and is UL® Classified to NFPA 2112
- Meets ANSI/ISEA 107
- Meets ANSI Class 3, Type R visibility standards
- ANSI Class 3, Type R compliant, 3M™ Scotchlite™ Reflective Material; segmented trim #5535 maintains performance through 65 home launderings
- FastDry® technology wicks away sweat for comfort
- Stain Breaker® technology releases stains
- Dark Navy color blocking in high wear areas to hide dirt
- Button-down collar with button closure
- FR melamine buttons throughout
- Two chest pockets with button closure
- Triple-stitched main seams
- Side-seamed construction minimizes twisting
- Extended sleeve plackets with two-button adjustable cuffs
- Carhartt FR label sewn on left pocket; NFPA 2112 / CAT 2 label sewn on sleeve placket
- Imported



102843-323
Brite Lime

CAT 2
ATPV
(CAL/CM²)
8.2

ARC RATED
NFPA
70E
COMPLIANT

NFPA
2112
UL CERTIFIED

ASTM
F1506
CERTIFIED

ANSI
CLASS
TYPE R
3

REGULAR M L XL 2XL

BIG 3XL 4XL

TALL M L XL 2XL 3XL 4XL

Flame Resistant Force Original Fit Midweight Hooded Sweatshirt

Model No. TS4983-M SAP No. 104983

ORIGINAL FIT

FABRIC

- 10.5-ounce, 40% cotton / 35% modacrylic / 15% viscose / 8% aramid / 2% antistat FR fleece

FEATURES

- Meets the performance requirements of NFPA 70E / ASTM F1506
- UL® classified to NFPA 2112
- Built with Force technology to wick sweat, dry fast, and fight odors
- FastDry® technology keeps you cool for all day comfort
- Attached three-piece hood with FR drawcord-adjustable closure
- Rib-knit cuffs and waist
- Locker loop facilitates hanging
- Carhartt FR and NFPA 2112 / CAT 3 labels sewn on pocket
- Front handwarmer pocket with inner media pocket
- Imported



104983-020
Granite Heather



104983-126
Navy



104983-BRN
Carhartt Brown

CAT 3
ATPV
(CAL/CM²)
25

ARC RATED
NFPA
70E
COMPLIANT

NFPA
2112
UL CERTIFIED

ASTM
F1506
CERTIFIED



REGULAR S M L XL 2XL

BIG 3XL 4XL

TALL M L XL 2XL 3XL

Flame Resistant Force Original Fit Midweight Hooded Zip Front Sweatshirt

Model No. TS4982-M SAP No. 104982

ORIGINAL FIT

FABRIC

- 10.5-ounce, 40% cotton / 35% modacrylic / 15% viscose / 8% aramid / 2% antistat FR fleece

FEATURES

- Meets the performance requirements of NFPA 70E / ASTM F1506
- UL® classified to NFPA 2112
- Built with Force technology to wick sweat, dry fast, and fight odors
- FastDry® technology keeps you cool for all day comfort
- Attached three-piece hood with FR drawcord-adjustable closure
- Vislon® front zip with Nomex® FR tape
- Rib-knit cuffs and waist
- Locker loop facilitates hanging
- Carhartt FR and NFPA 2112 / CAT 3 labels sewn on pocket
- Two front handwarmer pockets with inner media pocket
- Imported



104982-020
Granite Heather



104982-126
Navy



104982-BRN
Carhartt Brown

CAT 3
ATPV
(CAL/CM²)
25

ARC RATED
NFPA
70E
COMPLIANT

NFPA
2112
UL CERTIFIED

ASTM
F1506
CERTIFIED



REGULAR S M L XL 2XL

BIG 3XL 4XL

TALL L XL 2XL 3XL

Flame Resistant Force Original Fit Midweight Mock Neck Sweatshirt			
Model No.	TK5028-M	SAP No.	105028

<p>ORIGINAL FIT</p> <p>FABRIC</p> <ul style="list-style-type: none">· 10.5-ounce, 40% Cotton / 35% Modacrylic / 15% viscose / 8% Aramid / 2% Antistat fleece <p>FEATURES</p> <ul style="list-style-type: none">· Meets the performance requirements of NFPA 70E and ASTM F1506· UL® classified to NFPA 2112· Built with Force technology to wick sweat and dry fast and fight odors· FastDry® technology keeps you cool for all day comfort· Mock-neck collar with quarter-length zipper· Rib-knit cuffs and waist· Locker loop facilitates hanging· Carhartt FR and NFPA 2112 / CAT 3 labels sewn on pocket· Front handwarmer pocket with inner media pocket· Imported	



105028-013
Black Heather



105028-126
Navy

CAT 3
ATPV
(CAL/CM²)
25

ARC RATED
NFPA
70E
COMPLIANT

NFPA
2112
UL CERTIFIED

ASTM
F1506
CERTIFIED



REGULAR	S	M	L	XL	2XL	BIG	3XL	4XL	TALL	M	L	XL	2XL	3XL
---------	---	---	---	----	-----	-----	-----	-----	------	---	---	----	-----	-----



OUTFIT YOUR CREW TO OUTWORK THE HEAT

ANNUALLY AN ESTIMATED SIX MILLION WORKERS ARE AT RISK OF HEAT EXHAUSTION.*

The human body maintains safe temperature by perspiration and circulating blood to the skin. But when high heat is combined with high humidity, these natural cooling processes can't keep up. Carhartt PPE is specially designed to prevent heat exhaustion and one of the most effective tools for the job. Carhartt Force®, the key heat-fighting technology in our 4.7oz Long Sleeve FR Shirts, is formulated to work with the body's natural self-regulating processes. FastDry® technology wicks away sweat and speeds up evaporation so gear dries faster and keeps workers safe and comfortable in even the most severe heat. From FR to Hi-Vis, Carhartt has the heat-canceling gear you need to protect your crew from the dangers of heat exhaustion.



THE LIGHTEST, MOST BREATHABLE FR SHIRT WE'VE EVER BUILT

OUTFIT WORKERS IN CARHARTT'S COOLEST,
MOST COMFORTABLE FR SHIRT, GET A
HARDER-WORKING CREW IN TURN.

Our 4.7 oz FR Force® Lightweight Long Sleeve Shirt is extremely lightweight, with moisture-wicking and quick-drying properties that handle the hottest conditions with ease. Wrinkle resistance and extra colorfast properties make it a long-lasting favorite. Ounce for ounce, it's every bit as tough as our heavier weight Force® fabrics, with FR protection that's guaranteed for the life of the shirt.



Flame Resistant Force Original-Fit Lightweight Long-Sleeve Button-Front Shirt

Model No. TW4138-M SAP No. 104138

ORIGINAL FIT

FABRIC

- 4.7-ounce, 50% viscose / 33% meta-aramid / 10% nylon / 5% para-aramid / 2% antistat FR

FEATURES

- Meets the performance requirements of NFPA 70E / ASTM F1506
- UL® classified to NFPA 2112
- Built with Force technology to wick sweat, dry fast, and fight odors
- FastDry® technology keeps you cool for all day comfort
- Triple-stitched main seams
- Breathable honeycomb weave
- Wrinkle resistant, anti-static, colorfast fabric
- Extended sleeve plackets with two-button adjustable cuffs
- Carhartt FR label sewn on left pocket; NFPA 2112 / CAT 2 label sewn on sleeve placket
- Two chest pockets with button closures; Tradesman double-layer pocket on left chest
- Imported

MATCHING WOMEN'S STYLE AVAILABLE



104138-GRY
Gray



104138-437
Steel Blue



104138-DKH
Dark Khaki



104138-126
Navy

CAT 2
ATPV
(CAL/CM²)
8.6

ARC-RELATED
NFPA
70E
COMPLIANT

NFPA
2112
UL CERTIFIED

ASTM
F1506
CERTIFIED



REGULAR S M L XL 2XL

BIG 3XL 4XL

TALL M L XL 2XL 3XL 4XL

Flame Resistant Lightweight Twill Shirt

Model No. FRS003 SAP No. FRS003

ORIGINAL FIT

FABRIC

- 6-ounce, 88% cotton / 12% high-tenacity nylon FR twill

FEATURES

- Meets the performance requirements of NFPA 70E / ASTM F1506
- UL® classified to NFPA 2112
- Button-down collar and front; Flame resistant melamine buttons
- Carhartt FR label sewn on left pocket; NFPA 2112 / CAT 2 label sewn on sleeve placket
- Extended sleeve plackets with two-button adjustable cuffs
- Two chest pockets with flaps and button closures
- Imported



FRS003-DNY
Dark Navy



FRS003-KHI
Khaki



FRS003-GRY
Gray



FRS003-465
Medium Blue

CAT 2
ATPV
(CAL/CM²)
8.7

ARC-RELATED
NFPA
70E
COMPLIANT

NFPA
2112
UL CERTIFIED

ASTM
F1506
CERTIFIED

REGULAR S M L XL 2XL

BIG 3XL 4XL

TALL M L XL 2XL 3XL 4XL

Flame Resistant
Classic Twill Shirt

Model No.	SAP No.	FRS160
-----------	---------	--------

- ORIGINAL FIT**
- FABRIC**
- 7-ounce, 88% cotton / 12% high-tenacity nylon FR twill
- FEATURES**
- Meets the performance requirements of NFPA 70E / ASTM F1506
 - UL® classified to NFPA 2112
 - Triple-stitched main seams
 - Button-down collar and front; Flame Resistant melamine buttons
 - Carhartt FR label sewn on left pocket; NFPA 2112 / CAT 2 label sewn on sleeve placket
 - Extended sleeve plackets with adjustable two-button cuffs
 - Two chest pockets with flaps and button closures
 - Imported
- MATCHING WOMEN'S STYLE AVAILABLE IN SELECT COLORS**



FRS160-DNY
Dark Navy



FRS160-KHI
Khaki



FRS160-GRY
Gray



FRS160-MBL
Medium Blue

CAT 2

ATPV
(CAL/CM²)
8.6

ARC RATED
NFPA
70E
COMPLIANT

NFPA
2112
UL CERTIFIED

ASTM
F1506
CERTIFIED

REGULAR	S	M	L	XL	2XL	BIG	3XL	4XL	TALL	M	L	XL	2XL	3XL	4XL
---------	---	---	---	----	-----	-----	-----	-----	------	---	---	----	-----	-----	-----

Flame Resistant Signature Denim Jean – Relaxed Fit

Model No.	SAP No.	FRB100
-----------	---------	--------

RELAXED FIT

FABRIC

- 11.75-ounce, FR denim: 100% cotton

FEATURES

- Meets the performance requirements of NFPA 70E and is UL® Classified to NFPA 2112
- Comfortable fit through the seat and thigh with room to move
- Garment washed for soft finish
- Arc-resistant button closure at waist
- Brass zipper fly with Nomex® FR zipper tape
- Two reinforced back pockets
- Double-stitched main seams
- Straight leg opening
- Carhartt FR label sewn on back pocket; Carhartt FR and NFPA 2112 / CAT 2 label sewn on coin pocket
- Imported



FRB100-DNM
Denim

CAT 2
ATPV
(CAL/CM²)
16

ARC RATED
NFPA
70E
COMPLIANT

NFPA
2112
UL CERTIFIED

ASTM
F1506
CERTIFIED

WAIST SIZES 30" – 44
BIG & TALL EVEN WAIST SIZES 46" – 54"

EVEN INSEAMS 30" – 36"
EVEN INSEAMS 30" – 36"

Flame Resistant Signature Denim Dungaree

Model No.	SAP No.	FRB113
-----------	---------	--------

LOOSE FIT

FABRIC

- 11.75-ounce, 100% cotton FR denim

FEATURES

- Meets the performance requirements of NFPA 70E / ASTM F1506
- UL® classified to NFPA 2112
- Sits slightly above the waist
- More room to move with a comfortable fit through the seat and thigh and a straight leg opening
- Triple-stitched main seams
- Brass zipper fly with Nomex® FR zipper tape
- Arc-resistant button closure at waist
- Garment-washed for a soft finish and reduced shrinkage
- Carhartt FR label sewn on back pocket; NFPA 2112 / CAT 2 label sewn on front waistband
- Multiple utility pockets
- Left leg utility band
- Imported



FRB113-DNM
Denim

CAT 2
ATPV
(CAL/CM²)
16

ARC RATED
NFPA
70E
COMPLIANT

NFPA
2112
UL CERTIFIED

ASTM
F1506
CERTIFIED

WAIST SIZES 30" – 44
BIG & TALL EVEN WAIST SIZES 46" – 54"

EVEN INSEAMS 30" – 36"
EVEN INSEAMS 30" – 36"

Flame Resistant Rugged Flex® 5-Pocket Jean – Straight Fit

Model No. **BD5069-M** SAP No. **105069**

STRAIGHT FIT

FABRIC

- 12.5-ounce, 98% Cotton / 2% Spandex FR denim

FEATURES

- Meets the performance requirements of NFPA 70E / ASTM F1506
- UL® classified to NFPA 2112 · Built with Force technology to wick sweat and dry fast
- Built to move with Rugged Flex® stretch technology
- Sits slightly below the waist
- Closer-to-the-body fit through the seat and thigh with room to move
- Straight leg opening
- Brass zipper fly with Nomex® FR zipper tape
- Arc-resistant button closure at waist
- Stronger sewn-on-seam belt loop
- Carhartt FR label sewn on back pocket
- NFPA 2112 / CAT 2 label sewn on waistband
- Two reinforced back pockets
- Imported

MATCHING WOMEN'S STYLE AVAILABLE

NEW



105069-MDO
Midnight Indigo

CAT 2
ATPV
(CAL/CM²)
21

ARC RATED
NFPA
70E
COMPLIANT

NFPA
2112
UL CERTIFIED

ASTM
F1506
CERTIFIED



WAIST SIZES 30" – 44
BIG & TALL EVEN WAIST SIZES 46" – 54"

EVEN INSEAMS 30" – 36"
EVEN INSEAMS 30" – 36"

Flame Resistant Rugged Flex® Jean – Relaxed Fit

Model No. **BD5079-M** SAP No. **105079**

RELAXED FIT

FABRIC

- 12.5-ounce, 98% Cotton / 2% Spandex FR denim

FEATURES

- Meets the performance requirements of NFPA 70E / ASTM F1506
- UL® classified to NFPA 2112
- Built with Force technology to wick sweat and dry fast
- Built to move with Rugged Flex® stretch technology
- Sits slightly below the waist
- Closer-to-the-body fit through the seat and thigh with room to move
- Straight leg opening
- Brass zipper fly with Nomex® FR zipper tape
- Arc-resistant button closure at waist
- Stronger sewn-on-seam belt loop
- Carhartt FR label sewn on back pocket
- NFPA 2112 / CAT 2 label sewn on waistband
- Two reinforced back pockets
- Imported

MATCHING WOMEN'S STYLE AVAILABLE

NEW



105079-MDO
Midnight Indigo

CAT 2
ATPV
(CAL/CM²)
21

ARC RATED
NFPA
70E
COMPLIANT

NFPA
2112
UL CERTIFIED

ASTM
F1506
CERTIFIED



WAIST SIZES 30" – 44
BIG & TALL EVEN WAIST SIZES 46" – 54"

EVEN INSEAMS 30" – 36"
EVEN INSEAMS 30" – 36"

Flame Resistant Rugged Flex® 5-Pocket Tapered Jean – Relaxed Fit

Model No. **BD5172-M** SAP No. **105172**

RELAXED FIT

FABRIC

- 12.5-ounce, 98% Cotton / 2% Spandex FR denim

FEATURES

- Meets the performance requirements of NFPA 70E / ASTM F1506
- UL® classified to NFPA 2112
- Built to move with Rugged Flex® stretch technology
- Sits below the waist
- Comfortable fit through the seat and thigh with more room to move
- Tapered leg opening
- Brass zipper fly with Nomex® FR zipper tape
- Arc-resistant button closure at waist
- Stronger sewn-on-seam belt loop
- Carhartt FR label sewn on back pocket
- NFPA 2112 / CAT 2 label sewn on waistband
- Two reinforced back pockets
- Imported

MATCHING WOMEN'S STYLE AVAILABLE

NEW



105172-MDO
Midnight Indigo

CAT 2
ATPV
(CAL/CM²)
21

ARC RATED
NFPA
70E
COMPLIANT

NFPA
2112
UL CERTIFIED

ASTM
F1506
CERTIFIED



WAIST SIZES 30" – 44
BIG & TALL EVEN WAIST SIZES 46" – 54"

EVEN INSEAMS 30" – 36"
EVEN INSEAMS 30" – 36"

Flame Resistant Force Rugged Flex® Relaxed Fit 5-Pocket Jean

Model No. **BD4790-M** SAP No. **104790**

RELAXED FIT

FABRIC

- 11-ounce, 69% Cotton/29% Modacrylic / 1% Elastane / 1% Aramid FR denim

FEATURES

- Meets the performance requirements of NFPA 70E / UL® classified to NFPA 2112
- Built to move with Rugged Flex® stretch technology
- Built with Force technology to wick sweat and dry fast
- FastDry® technology keeps you cool for all day comfort
- Sits slightly below the waist
- More room to move with a comfortable fit through the seat and thigh and a straight leg opening
- Strong sewn-on-seam belt loops
- Carhartt FR label sewn on back pocket; NFPA 2112 / CAT 2 label sewn on waistband
- Imported



104790-I31
Midnight Sand

CAT 2
EBT
(CAL/CM²)
12

ARC RATED
NFPA
70E
COMPLIANT

NFPA
2112
UL CERTIFIED

ASTM
F1506
CERTIFIED



WAIST SIZES 30" – 44
BIG & TALL EVEN WAIST SIZES 46" – 54"

EVEN INSEAMS 30" – 36"
EVEN INSEAMS 30" – 36"

Flame Resistant Force Rugged Flex® Relaxed Fit Utility Jean

Model No. **BD4633-M** SAP No. **104633**

RELAXED FIT

FABRIC

- 11-ounce, 69% Cotton / 29% Modacrylic / 1% Elastane / 1% Aramid FR denim

FEATURES

- Meets the performance requirements of NFPA 70E / ASTM F1506
- UL® classified to NFPA 2112
- Built to move with Rugged Flex stretch technology
- Built with Force technology to wick sweat and dry fast
- FastDry® technology keeps you cool for all day comfort
- Sits slightly below the waist
- More room to move with a comfortable fit through the seat and thigh and a straight leg opening
- Strong sewn-on-seam belt loops
- Carhartt FR label sewn on back pocket; NFPA 2112 / CAT 2 label sewn on waistband
- Reinforced front slash pocket
- Two back pockets
- Multiple tool and utility pockets
- Imported



104633-I32
Boulder

CAT 2
EBT
(CAL/CM²)
12

ARC RATED
NFPA
70E
COMPLIANT

NFPA
2112
UL CERTIFIED

ASTM
F1506
CERTIFIED



WAIST SIZES 30" – 44"

BIG & TALL EVEN WAIST SIZES 46" – 54"

EVEN INSEAMS 30" – 36"

EVEN INSEAMS 30" – 36"

Flame Resistant Canvas Pant

Model No. **FRB159** SAP No. **FRB159**

LOOSE FIT

FABRIC

- 8.5-ounce, 88% cotton / 12% high-tenacity nylon FR canvas

FEATURES

- Meets the performance requirements of NFPA 70E / ASTM F1506
- UL® classified to NFPA 2112
- Sits slightly above the waist
- Our roomiest cut with a generous fit through the seat and thigh and a straight leg opening
- Triple-stitched main seams
- Brass zipper fly with Nomex® FR zipper tape
- Arc-resistant button closure at waist
- Carhartt FR label sewn on back pocket; NFPA 2112 / CAT 2 label sewn on coin pocket
- Multiple utility pockets; Cell phone pocket
- Two reinforced back pockets
- Imported



FRB159-DNY
Dark Navy



FRB159-GKH
Golden Khaki



FRB159-MOS
Moss

CAT 2
ATPV
(CAL/CM²)
12

ARC RATED
NFPA
70E
COMPLIANT

NFPA
2112
UL CERTIFIED

ASTM
F1506
CERTIFIED

WAIST SIZES 30" – 44"

BIG & TALL EVEN WAIST SIZES 46" – 54"

EVEN INSEAMS 30" – 36"

EVEN INSEAMS 30" – 36"

Flame Resistant Canvas Cargo Pant		
Model No.	SAP No.	FRB240
LOOSE FIT FABRIC · 8.5-ounce, 88% cotton / 12% high-tenacity nylon FR canvas FEATURES · Meets the performance requirements of NFPA 70E / ASTM F1506 · UL® classified to NFPA 2112 · More room to move with a comfortable fit through the seat and thigh and a straight leg opening · Triple-stitched main seams · Brass zipper fly with Nomex® FR zipper tape · Arc-resistant button closure at waist · Carhartt FR label sewn on back pocket; NFPA 2112 / CAT 2 label sewn on waistband · Two large side cargo pockets with pen slots · Two reinforced back pockets · Imported		
WAIST SIZES 30" – 44 BIG & TALL EVEN WAIST SIZES 46" – 54"		



FRB240-GKH
Golden Khaki



FRB240-BLK
Black

CAT 2
APTV
(CAL/CM²)
12

ARC RATED
NFPA
70E
COMPLIANT

NFPA
2112
UL CERTIFIED

ASTM
F1506
CERTIFIED

EVEN INSEAMS 30" – 36"
EVEN INSEAMS 30" – 36"

Flame Resistant Rugged Flex® Relaxed Fit Canvas Five-Pocket Work Pant		
Model No.	SAP No.	104204
RELAXED FIT FABRIC 9-ounce, 98% cotton / 2% spandex canvas FEATURES · Meets the performance requirements of NFPA 70E / ASTM F1506 · UL® classified to NFPA 2112 · Built to move with Rugged Flex® stretch technology · Sits slightly below the waist; Comfortable fit through the seat and thigh with more room to move; Straight leg opening · Stronger sewn-on-seam belt loops · Carhartt FR label sewn on back pocket; NFPA 2112 / CAT 2 label sewn on coin pocket · Right-leg secured cell phone pocket · Left-leg multi-utility pocket · Imported		
WAIST SIZES 30" – 44 BIG & TALL EVEN WAIST SIZES 46" – 54"		



104204-DKH
Dark Khaki



104204-126
Navy



104204-029
Shadow

CAT 2
ATPV
(CAL/CM²)
11

ARC RATED
NFPA
70E
COMPLIANT

NFPA
2112
UL CERTIFIED

ASTM
F1506
CERTIFIED



EVEN INSEAMS 30" – 36"
EVEN INSEAMS 30" – 36"

Flame Resistant Rugged Flex® Relaxed Fit Canvas Cargo Pant

Model No. **BN3574-FRM** SAP No. **104205**

RELAXED FIT

FABRIC

- 9-ounce, 98% cotton / 2% spandex canvas

FEATURES

- Meets the performance requirements of NFPA 70E / ASTM F1506
- UL® classified to NFPA 2112
- Built to move with Rugged Flex® stretch technology
- Sits slightly below the waist; Comfortable fit through the seat and thigh with more room to move; Straight leg opening
- Stronger sewn-on-seam belt loops
- Carhartt FR label sewn on back pocket; NFPA 2112 / CAT 2 label sewn on coin pocket
- Secure cargo pocket with utility pocket and cell phone storage
- Reinforced Dungaree back pockets
- Imported

MATCHING WOMEN'S STYLE AVAILABLE



104205-DKH
Dark Khaki



104205-I26
Navy

CAT 2
ATPV
(CAL/CM²)
11

ARC RATED
NFPA
70E
COMPLIANT

NFPA
2112
UL CERTIFIED

ASTM
F1506
CERTIFIED



WAIST SIZES 30" – 44
BIG & TALL EVEN WAIST SIZES 46" – 54"

EVEN INSEAMS 30" – 36"
EVEN INSEAMS 30" – 36"

Flame Resistant Washed Duck Work Dungaree

Model No. **100791** SAP No. **100791**

LOOSE FIT

FABRIC

- 11-ounce, FR duck: 88% cotton / 12% nylon

FEATURES

- Meets the performance requirements of NFPA 70E and is UL® Classified to NFPA 2112
- Sits at the waist
- Garment washed for soft finish
- Arc-resistant button closure at waist
- Brass zipper fly with Nomex® FR zipper tape
- Left-leg utility band
- Triple-stitched main seams
- Straight leg opening
- Carhartt FR label sewn on back pocket; NFPA 2112 / CAT 2 label sewn on front waistband
- Imported



100791-001
Black



100791-246
Mid Brown



100791-410
Dark Navy

CAT 2
ATPV
(CAL/CM²)
15

ARC RATED
NFPA
70E
COMPLIANT

NFPA
2112
UL CERTIFIED

ASTM
F1506
CERTIFIED

WAIST SIZES 30" – 44
BIG & TALL EVEN WAIST SIZES 46" – 54"

EVEN INSEAMS 30" – 36"
EVEN INSEAMS 30" – 36"

Flame Resistant Rain Defender® Relaxed Fit Mock Neck Fleece

Model No. **OJ5012-M** SAP No. **105012**

FABRIC

- 10.5-ounce, 46% lyocell / 37% modacrylic / 14% aramid / 3% elastane spandex fleece

FEATURES

- Meets the performance requirements of NFPA 70E / ASTM F1506
- UL® classified to NFPA 2112
- Rain Defender® durable water repellent (DWR)
- Half zip mock neck collar
- Vislon® front zipper with Nomex FR tape; protective inner flap
- Front handwarmer pockets
- Hidden media pocket
- Abrasion resistant print on shoulder, collar, pockets, and cuffs for added protection
- Carhartt label sewn on pocket
- Carhartt FR and NFPA 2112 / CAT 2 labels sewn on left pocket
- Imported

NEW



105012-I26
Navy



105012--029
Shadow

CAT 2
ATPV
(CAL/CM²)
17

ARC RATED
NFPA
70E
COMPLIANT

NFPA
2112
UL CERTIFIED

ASTM
F1506
CERTIFIED



REGULAR S M L XL 2XL

BIG 3XL 4XL

TALL L XL 2XL 3XL

Flame Resistant Rain Defender® Relaxed Fit Fleece Jacket

Model No. **OJ5010-M** SAP No. **105010**

FABRIC

- 10.5-ounce, 46% lyocell / 37% modacrylic / 14% aramid / 3% elastane spandex fleece

FEATURES

- Meets the performance requirements of NFPA 70E / ASTM F1506
- UL® classified to NFPA 2112
- Rain Defender® durable water repellent (DWR)
- Attached hood with adjustable FR drawcord closure
- Vislon® front zipper with Nomex FR tape; protective inner flap
- Front handwarmer pockets with flaps for added security
- Hidden media pocket
- Abrasion resistant print on shoulder, hood, pockets, waist, and cuffs for added protection
- Carhartt label sewn on pocket
- Carhartt FR and NFPA 2112 / CAT 2 labels sewn on left pocket
- Imported

NEW



105010-I26
Navy

CAT 2
ATPV
(CAL/CM²)
17

ARC RATED
NFPA
70E
COMPLIANT

NFPA
2112
UL CERTIFIED

ASTM
F1506
CERTIFIED



REGULAR S M L XL 2XL

BIG 3XL 4XL

TALL L XL 2XL 3XL

Flame Resistant Duck Traditional Coat

Model No.	SAP No.	101618
-----------	---------	--------

HEAVYWEIGHT

FABRIC

- 13-ounce, 100% cotton FR duck
- 11.5-ounce FR quilted twill lining / FR modacrylic batting insulation for warmth

FEATURES

- Meets the performance requirements of NFPA 70E / ASTM F1506
- UL® classified to NFPA 2112
- Under-collar hood snaps for optional hood
- Two-way brass zipper with Nomex® FR zipper tape; Inner and outer storm flaps with hook-and-loop closure for electric-arc protection
- Carhartt FR and NFPA 2112 / CAT 4 labels sewn on left-chest pocket
- Two chest pockets
- Two inner patch pockets with FR hook-and-loop closures
- Back length: Large regular: 31.5"; Large tall: 33.5"
- Imported



101618-410
Dark Navy



101618-211
Carhartt Brown



101618-001
Black

CAT 4
ATPV
(CAL/CM²)
54

ARC RATED
NFPA
70E
COMPLIANT

NFPA
2112
UL CERTIFIED

ASTM
F1506
CERTIFIED

REGULAR S M L XL 2XL

BIG 3XL 4XL

TALL L XL 2XL 3XL

Flame Resistant Duck Active Jac

Model No.	SAP No.	101621
-----------	---------	--------

HEAVYWEIGHT

FABRIC

- 13-ounce, 100% cotton FR duck
- 11.5-ounce FR quilted twill lining / FR modacrylic batting insulation for warmth

FEATURES

- Meets the performance requirements of NFPA 70E / ASTM F1506
- UL® classified to NFPA 2112
- Quilt-lined hood with adjustable Nomex® FR drawcord
- Brass front zipper with Nomex® FR zipper tape; Inner and outer hook-and-loop storm flaps for electric-arc protection
- Nomex® FR rib-knit cuffs and waistband
- Carhartt FR label sewn on front pocket; NFPA 2112 / CAT 4 label sewn on zipper flap
- Two lower-front pockets
- Two inner patch pockets with FR hook-and-loop closures
- Back length: Large regular: 29"; Large tall: 31"
- Imported



101621-211
Carhartt Brown



101621-410
Dark Navy



101621-001
Black

CAT 4
ATPV
(CAL/CM²)
54

ARC RATED
NFPA
70E
COMPLIANT

NFPA
2112
UL CERTIFIED

ASTM
F1506
CERTIFIED

REGULAR S M L XL 2XL

BIG 3XL 4XL

TALL L XL 2XL 3XL

Flame Resistant Duck Vest Sherpa Lined			
Model No.	OV4981-M	SAP No.	104981
HEAVYWEIGHT FABRIC <ul style="list-style-type: none"> 13-ounce, 100% cotton FR duck FR sherpa lining FEATURES <ul style="list-style-type: none"> Meets the performance requirements of NFPA 70E UL® classified to NFPA 2112 Vislon® front zipper with Nomex® FR zipper tape with inner storm flap & zipper garage at chin for electric-arc protection Drop-tail hem for added coverage Carhartt FR and NFPA 2112 / CAT 3 labels sewn on left-front pocket Two large front pockets lined with FR sherpa for warmth & comfort Two inside drop-in pockets Imported 			

NEW



104981-BRN
Carhartt Brown



104981-DNY
Dark Navy



104981-GVL
Gravel

CAT 3
ATPV
(CAL/CM²)
32

ARC RATED
NFPA
70E
COMPLIANT

NFPA
2112
UL CERTIFIED

ASTM
F1506
CERTIFIED

REGULAR S M L XL 2XL

BIG 3XL 4XL

TALL M L XL 2XL

Flame Resistant Duck Bib Overall		
Model No.	SAP No.	101627
HEAVYWEIGHT FABRIC <ul style="list-style-type: none"> 13-ounce 100% cotton FR duck FEATURES <ul style="list-style-type: none"> Meets the performance requirements of NFPA 70E / ASTM F1506 UL® classified to NFPA 2112 High back with FR suspenders and FR side-release buckles FR melamine buttons at waist Carhartt FR and NFPA 2112 / CAT 2 labels sewn on front pocket Multi-compartment bib pocket Two large lower-front pockets Two reinforced back pockets Multi tool and utility pockets Double-layer knees with openings for adding knee pads and cleaning out debris Ankle-to-thigh brass leg zips with Nomex® FR zipper tape and protective flaps with arc-resistant snap closures Imported 		



101627-211
Carhartt Brown



101627-410
Dark Navy



101627-001
Black

CAT 2
ATPV
(CAL/CM²)
16

ARC RATED
NFPA
70E
COMPLIANT

NFPA
2112
UL CERTIFIED

ASTM
F1506
CERTIFIED

WAIST SIZES 30" – 44
BIG & TALL EVEN WAIST SIZES 46" – 54"

EVEN INSEAMS 28" – 36"
EVEN INSEAMS 28" – 36"

Flame Resistant Duck Bib Lined Overall

Model No. SAP No. 101626

HEAVYWEIGHT

FABRIC

- 13-ounce 100% cotton FR duck
- 11.5-ounce FR quilted twill lining / FR modacrylic batting insulation for warmth

FEATURES

- Meets the performance requirements of NFPA 70E / ASTM F1506
- UL® classified to NFPA 2112
- High back with suspenders and FR side-release buckles
- FR melamine buttons at waist
- Carhartt FR and NFPA 2112 / CAT 4 labels sewn on front pocket
- Multi-compartment bib pocket
- Multi tool and utility pockets
- Two large lower-front pockets
- Two reinforced back pockets
- Double-layer knees with openings for adding knee pads and cleaning out debris
- Ankle-to-thigh brass leg zips with Nomex® FR zipper tape and protective flaps with arc-resistant snap closures
- Imported



101626-211
Carhartt Brown



101626-410
Dark Navy



101626-001
Black

CAT 2
ATPV (CAL/CM²)
16
Unlined

CAT 4
ATPV (CAL/CM²)
54
Lined

ARC RATED
NFPA
70E
COMPLIANT

NFPA
2112
UL CERTIFIED

ASTM
F1506
CERTIFIED

WAIST SIZES 30" – 44
BIG & TALL EVEN WAIST SIZES 46" – 54"

EVEN INSEAMS 28" – 36"
EVEN INSEAMS 28" – 36"

Flame Resistant Full Swing® Quick Duck® Coat

Model No. SAP No. 102182

HEAVYWEIGHT

FABRIC

- 8.5 ounce, 88% cotton / 12% nylon FR Quick Duck® canvas
- 150g 3M™ Thinsulate™ Platinum FR Insulation for warmth

FEATURES

- Meets the performance requirements of NFPA 70E / ASTM F1506
- UL® classified to NFPA 2112
- All Full Swing® gear is built broken-in to help you move like you mean it 24/7
- Rain Defender® durable water repellent (DWR)
- Triple-stitched main seams
- Stand-up collar; Under-collar hood snaps for optional hood
- Brass zipper front with Nomex® FR zipper tape; Inner and outer protective flaps with snap closure for electric-arc protection
- Two-chest pockets with flaps and hidden snap closures; Two lower-front pockets with snap closures; Left sleeve upper arm pocket
- Two inside patch pockets with FR hook-and-loop closures; Inside pocket with hook and loop closure
- Internal rib-knit storm cuffs with ergonomically shaped sleeve hems
- Carhartt FR and NFPA 2112 / CAT 3 labels sewn on left chest pocket
- Back length: Large regular: 30"; Large tall: 32"
- Imported

MATCHING WOMEN'S STYLE AVAILABLE



102182-410
Dark Navy



102182-211
Carhartt Brown

CAT 3
ATPV (CAL/CM²)
36

ARC RATED
NFPA
70E
COMPLIANT

NFPA
2112
UL CERTIFIED

ASTM
F1506
CERTIFIED



REGULAR S M L XL 2XL

BIG 3XL 4XL

TALL L XL 2XL 3XL

Flame Resistant Full Swing® Quick Duck® Jacket

Model No.	SAP No.	102179
-----------	---------	--------

FABRIC

- 8.5-ounce, 88% cotton / 12% nylon FR Quick Duck® canvas
- 7-ounce, 88% cotton / 12% high-tenacity FR twill lining

FEATURES

- Meets the performance requirements of NFPA 70E / ASTM F1506
- UL® classified to NFPA 2112
- Full Swing gear is built broken-in to help you move like you mean it 24/7
- Rain Defender® durable water repellent (DWR)
- Triple-stitched main seams
- Stand-up collar
- Vislon® front zipper with Nomex® FR zip tape; Protective inner flap
- Adjustable cuffs with ergonomic shaped sleeve hem
- Left-chest map pocket with zipper closure; Left sleeve upper arm pocket
- Two inside patch pockets with FR hook-and-loop closures
- Carhartt FR and NFPA 2112 / CAT 2 labels sewn on lower front
- Back length: Large regular: 29"; Large tall: 31"
- Imported

MATCHING WOMEN'S STYLE AVAILABLE



102179-211
Carhartt Brown



102179-410
Dark Navy

CAT 2
ATPV
(CAL/CM²)
14

ARC RATED
NFPA
70E
COMPLIANT

NFPA
2112
UL CERTIFIED

ASTM
F1506
CERTIFIED



REGULAR S M L XL 2XL

BIG 3XL 4XL

TALL L XL 2XL 3XL

Flame Resistant Quick Duck® Bib Overall / Quilt Lined

Model No.	SAP No.	102691
-----------	---------	--------

MIDWEIGHT

FABRIC

- 8.5-ounce, FR Quick Duck®: 88% cotton / 12% nylon with Rain Defender® durable water repellent
- Insulated with 150g 3M™ Thinsulate™ Platinum Insulation FR

FEATURES

- Meets the performance requirements of NFPA 70E / ASTM F1506
- UL® classified to NFPA 2112
- High back with FR elastic suspenders and FR side-release buckles
- FR melamine buttons at waist
- Brass zip fly with Nomex® FR zipper tape
- Carhartt FR and NFPA 2112 labels sewn on front pocket
- Multi-compartment bib pocket with zip closure
- Multi tool and utility pockets
- Two large lower-front pockets
- Two reinforced back pockets
- Articulated knees for ease of movement
- Double-layer knees with openings for adding knee pads and cleaning out debris
- Brass leg zips with Nomex® FR zipper tape and protective flaps
- Imported



102691-410
Dark Navy

CAT 3
ATPV
(CAL/CM²)
36

Lined

CAT 2
ATPV
(CAL/CM²)
9

Unlined

ARC RATED
NFPA
70E
COMPLIANT

NFPA
2112
UL CERTIFIED

ASTM
F1506
CERTIFIED



WAIST SIZES 30" – 44
BIG & TALL EVEN WAIST SIZES 46" – 54"

EVEN INSEAMS 28" – 36"
EVEN INSEAMS 28" – 36"

Flame Resistant Loose Fit Twill Coverall

Model No. **OX5016-M** SAP No. **105016**

FABRIC

- 7-ounce, 88% cotton 12% nylon FR twill

FEATURES

- Meets the performance requirements of NFPA 70E / ASTM F1506
- UL classified to NFPA 2112
- Two-way front zipper with storm flap and high temperature-resistant FR zipper tape
- Two secure chest pockets with flaps and hook & loop closure
- Comfort flex waistband for increased comfort
- Back yoke with pleats for ease of movement
- Multiple utility pockets for added storage
- Adjustable sleeve cuff with snap closure
- Ankle-to-knee leg opening with snap closure fits over boots
- Two side-entry pass-through pockets with snap closures
- Carhartt FR and NFPA 2112 / CAT 2 labels sewn on left-chest pocket
- Two chest flap pockets
- Imported

NEW



105016-126
Navy

CAT 2

ATPV
(CAL/CM²)
8.7

ARC RATED
NFPA
70E
COMPLIANT

NFPA
2112
UL CERTIFIED

ASTM
F1506
CERTIFIED

SHORT M – 2XL
SHORT BIG 3XL – 4XL

REGULAR S – 2XL
REGULAR BIG 3XL – 5XL

TALL M – 2XL
TALL BIG 3XL – 4XL

Flame Resistant Traditional Twill Coverall

Model No. **101017** SAP No. **101017**

FABRIC

- 9-ounce, 100% cotton FR twill

FEATURES

- Spread collar
- Two chest pockets with flaps
- Two pass-through pockets
- Utility pocket
- Brass front zipper with Nomex® FR zipper tape and inside and outside protective flaps
- Split-back construction
- Pleated bi-swing back
- Triple-stitched main seams
- Leg openings fit over boots for easy on and off
- Carhartt FR and NFPA 2112 / CAT 2 labels sewn on left-chest pocket
- Meets the performance requirements of NFPA 70E and is UL® Classified to NFPA 2112
- Imported



101017-250
Khaki



101017-033
Gray

CAT 2

ATPV
(CAL/CM²)
11

ARC RATED
NFPA
70E
COMPLIANT

NFPA
2112
UL CERTIFIED

ASTM
F1506
CERTIFIED

SHORT 34" – 60"

REGULAR 34" – 60"

TALL 38" – 58"

Flame Resistant Watch Hat

Model No.	SAP No.	102869
-----------	---------	--------

FABRIC

- 55% modacrylic / 45% cotton stretchable rib-knit

FEATURES

- Meets the performance requirements of NFPA 70E / ASTM F1506
- Carhartt FR patch sewn on brim
- Imported

ONE SIZE FITS ALL



102869-410
Dark Navy

CAT 2
ATPV
(CAL/CM²)
19

ARC RATED
NFPA
70E
COMPLIANT

Flame Resistant Fleece 2-in-1 Hat

Model No.	SAP No.	103519
-----------	---------	--------

FABRIC

- 10-ounce, 44% modacrylic / 40% wool / 11% aramid / 5% lyocell Tecasafe® Plus FR fleece
- Face mask: 6.75-ounce, 45% modacrylic / 35% lyocell / 20% aramid FR piqué

FEATURES

- Meets the performance requirements of NFPA 70E / ASTM F1506
- UL® classified to NFPA 2112
- Rain Defender® durable water repellent (DWR)
- Face mask: Built with Force technology to wick sweat and dry fast
- Face mask: FastDry® technology keeps you cool for all day comfort
- Face mask extends below the neckline and stores below the chin
- Carhartt FR label sewn on front
- Imported

ONE SIZE FITS ALL



103519-410
Dark Navy

CAT 2
ATPV
(CAL/CM²)
8.2

ARC RATED
NFPA
70E
COMPLIANT

NFPA
2112
UL CERTIFIED

ASTM
F1506
CERTIFIED



Flame Resistant Force Balaclava

Model No.	SAP No.	103520
-----------	---------	--------

FABRIC

- 6.75-ounce, 45% modacrylic / 35% lyocell / 20% aramid FR pique knit

FEATURES

- Meets the performance requirements of NFPA 70E / ASTM F1506
- Built with Force technology to wick sweat and dry fast
- FastDry® technology keeps you cool for all day comfort
- Full facial protection that extends below the neckline
- Face mask pulls down below the chin when not needed
- Carhartt FR label sewn on front
- Imported

ONE SIZE FITS ALL



103520-410
Dark Navy

CAT 2

ATPV (CAL/CM²)
8.2

ARC RATED
NFPA 70E
COMPLIANT

NFPA 2112
UL CERTIFIED

ASTM F1506
CERTIFIED



Flame Resistant Duck Hood

Model No.	SAP No.	FRA265
-----------	---------	--------

FABRIC

- 13-ounce, 100% cotton FR duck
- 11.5-ounce FR quilted twill lining; FR modacrylic batting insulation for warmth

FEATURES

- Meets the performance requirements of NFPA 70E / ASTM F1506
- Three-piece hood design for better fit ·Adjustable Nomex® FR draw-cord
- Chin protector with FR hook-and-loop closure
- Arc-resistant snaps for attachment to FR outerwear only
- Imported

ONE SIZE FITS ALL



FRA265-DNY
Dark Navy



FRA265-BRN
Carhartt Brown



FRA265-BLK
Black

CAT 4

ATPV (CAL/CM²)
54

ARC RATED
NFPA 70E
COMPLIANT

Flame Resistant Quick Duck® Hood

Model No.	SAP No.	102183
-----------	---------	--------

FABRIC

- 8.5-ounce, 88% cotton / 12% nylon FR Quick Duck® canvas
- 150g 3M™ Thinsulate™ Platinum FR insulation

FEATURES

- Meets the performance requirements of NFPA 70E / ASTM F1506
- Rain Defender® durable water repellent (DWR)
- Three-piece hood design for better fit
- Adjustable Nomex® FR drawcord with secure nylon lock
- Specifically designed to snap onto FR Quick Duck® outerwear
- Imported

ONE SIZE FITS ALL



102183-410
Dark Navy



102183-211
Carhartt Brown

CAT 3
ATPV
(CAL/CM²)
36

ARC RATED
NFPA
70E
COMPLIANT

MADE WITH
3M THINSULATE™
Insulation / Isolation
FLAME RESISTANT
RETARDANT DE FLAMME





WOMEN'S FLAME RESISTANT

**THE SAFETY AND PERFORMANCE SHE NEEDS,
WITH THE FIT SHE'S BEEN WAITING FOR**

Women's Flame Resistant Force Cotton Long-Sleeve Crew T-Shirt

Model No.	SAP No.	102685
-----------	---------	--------

SLIGHTLY FITTED

FABRIC

- 6.75-ounce, 100% cotton FR jersey knit

FEATURES

- Meets the performance requirements of NFPA 70E / ASTM F1506
- UL® classified to NFPA 2112
- Built with Force technology to wick sweat, dry fast, and fight odors
- FastDry® technology keeps you cool for all day comfort
- Rib-knit crewneck, collar, and cuffs
- Left chest pocket
- Mesh side panel provides added stretch and comfort
- Droptail hem for added coverage
- Carhartt FR label sewn on pocket; NFPA 2112 / CAT 2 label sewn on front
- Left-chest pocket
- Imported

MATCHING MEN'S STYLE AVAILABLE



102685-410
Navy



102685-250
Khaki

CAT 2
ATPV
(CAL/CM²)
8.9

ARC RATED
NFPA
70E
COMPLIANT

NFPA
2112
UL CERTIFIED

ASTM
F1506
CERTIFIED



REGULAR XS S M L XL XXL

Women's Flame Resistant Force Cotton Hybrid Shirt

Model No.	SAP No.	102687
-----------	---------	--------

FABRIC

- 6.75-ounce, 100% cotton FR jersey knit

FEATURES

- Meets the performance requirements of NFPA 70E / ASTM F1506
- UL® classified to NFPA 2112
- Built with Force technology to wick sweat, dry fast, and fight odors
- FastDry® technology keeps you cool for all day comfort
- Triple-stitched main seams
- Button-down collar with FR melamine button closure
- Mesh side panel extends to back yoke for added stretch and comfort
- Side-seam construction minimizes twisting
- Two-button adjustable cuffs
- Carhartt FR label sewn on left pocket; NFPA 2112 / CAT 2 label sewn on sleeve placket
- Two chest pockets

MATCHING MEN'S STYLE AVAILABLE



102687-250
Khaki



102687-410
Dark Navy



102687-465
Medium Blue

CAT 2
ATPV
(CAL/CM²)
8.9

ARC RATED
NFPA
70E
COMPLIANT

NFPA
2112
UL CERTIFIED

ASTM
F1506
CERTIFIED



REGULAR XS S M L XL XXL

Women's Flame Resistant Force Relaxed Fit Midweight Hooded Zip-Front

Model No. **TS4982-W** SAP No. **105284**

FABRIC

- 10.5-ounce, 40% cotton / 35% modacrylic / 15% viscose / 8% aramid / 2% antistat FR fleece

FEATURES

- Meets the performance requirements of NFPA 70E and ASTM F1506
- UL® classified to NFPA 2112
- Built with Force technology to wick sweat and dry fast and fight odors
- FastDry® technology keeps you cool for all day comfort
- Attached three-piece hood with FR drawcord adjustable closure
- Vislon® front zip with Nomex® FR tape
- Rib-knit cuffs and waist
- Locker loop facilitates hanging
- Carhartt FR and NFPA 2112 / CAT 3 labels sewn on pocket
- Two front handwarmer pockets with inner media pocket
- Imported

NEW



105284-I26
Navy

CAT 3

ATPV
(CAL/CM²)
25

ARC RATED
NFPA
70E
COMPLIANT

NFPA
2112
UL CERTIFIED

ASTM
F1506
CERTIFIED



REGULAR XS S M L XL XXL

Women's Flame Resistant Force Relaxed Fit Long-Sleeve Shirt

Model No. **TS4982-W** SAP No. **104147**

FABRIC

- 4.7-ounce, 50% lenzing / 38% aramid / 10% polyamide / 2% antistat FR

FEATURES

- Meets the performance requirements of NFPA 70E / ASTM F1506
- UL® classified to NFPA 2112
- Built with Force technology to wick sweat, dry fast, and fight odors
- FastDry® technology keeps you cool for all day comfort
- Triple-stitched main seams
- Button-down collar with FR melamine button closure
- Extended sleeve plackets with two-button adjustable cuffs
- Carhartt FR label sewn on left pocket; NFPA 2112 / CAT 2 label sewn on sleeve placket
- Two chest pockets button closures
- Imported

MATCHING MEN'S STYLE AVAILABLE



104147-437
Steel Blue



104147-DKH
Dark Khaki



104147-GRY
Gray



104147-I26
Navy

CAT 2

ATPV
(CAL/CM²)
8.6

ARC RATED
NFPA
70E
COMPLIANT

NFPA
2112
UL CERTIFIED

ASTM
F1506
CERTIFIED



REGULAR XS S M L XL XXL

Women's Flame Resistant Relaxed Fit Rugged Flex® Twill Shirt

Model No.	SAP No.	102459
-----------	---------	--------

FABRIC

- 7-ounce, 87% cotton / 7% high-tenacity nylon / 5% polyester / 1% spandex FR twill

FEATURES

- Meets the performance requirements of NFPA 70E / ASTM F1506
- UL® classified to NFPA 2112
- Built to move with Rugged Flex stretch technology
- Triple-stitched main seams
- Button-down collar with FR melamine buttons
- Adjustable cuff with button closure
- Carhartt FR label sewn on left pocket flap; NFPA 2112 / CAT 2 labels sewn on sleeve placket
- Two chest pockets with flaps and button closure
- Imported

MATCHING MEN'S STYLE AVAILABLE



102459-250
Khaki



102459-410
Dark Navy

CAT 2
ATPV
(CAL/CM²)
8.9

ARC RATED
NFPA
70E
COMPLIANT

NFPA
2112
UL CERTIFIED

ASTM
F1506
CERTIFIED



REGULAR XS S M L XL XXL

Women's Flame Resistant Rugged Flex® Jean Original Fit

Model No.	SAP No.	102688
-----------	---------	--------

ORIGINAL FIT

FABRIC

- 11-ounce, 69% cotton / 30% modacrylic / 1% elastane FR denim

FEATURES

- Meets the performance requirements of NFPA 70E / ASTM F1506
- UL® classified to NFPA 2112
- Built to move with Rugged Flex® stretch technology
- Mid front rise sits just below the waist; Comfortable fit through hip and thigh; Leg opening fits over boots
- Brass zipper fly with Nomex® FR zipper tape
- Arc-resistant button closure at waist
- Higher back rise for added coverage
- Garment-washed for a soft finish
- Carhartt FR label sewn on back pocket; NFPA 2112 / CAT 2 label sewn on waistband
- Two reinforced back pockets
- Imported

MATCHING MEN'S STYLE AVAILABLE



102688-417
Premium Dark

CAT 2
ATPV
(CAL/CM²)
14

ARC RATED
NFPA
70E
COMPLIANT

NFPA
2112
UL CERTIFIED

ASTM
F1506
CERTIFIED



WAIST SIZES 2 – 20

SHORT INSEAM 30"
REGULAR INSEAM 32"
TALL INSEAM 34"



Women's Flame Resistant Rugged Flex® Relaxed Fit Canvas Work Pant

Model No. **BN5015-W** SAP No. **105015**

RELAXED FIT

FABRIC

- 9-ounce, 98% cotton / 2% spandex FR canvas

FEATURES

- Meets the performance requirements of NFPA 70E
- UL® classified to NFPA 2112
- Built to move with Rugged Flex® stretch technology
- Mid-front rise sits slightly below the waist
- Comfortable fit through hip and thigh
- Brass zipper fly with high temperature-resistant FR zipper tape
- Arc-resistant button closure at waist
- Higher back rise for added coverage
- Stronger sewn-in-seam belt loops
- Leg opening fits over boots
- Carhartt FR label sewn on back pocket
- NFPA 2112 / CAT 2 label sewn on waistband
- Two reinforced back pockets
- Cell phone and utility pocket
- Imported

MATCHING MEN'S STYLE AVAILABLE

NEW



105015-DKH
Dark Khaki

105015-I26
Navy

CAT 2
ATPV
(CAL/CM²)
11

ARC-RATED
NFPA
70E
COMPLIANT

NFPA
2112
UL CERTIFIED

ASTM
F1506
CERTIFIED



WAIST SIZES 2 – 20

SHORT INSEAM 30"
REGULAR INSEAM 32"
TALL INSEAM 34"

Women's Flame Resistant Force Fitted Midweight Utility Legging

Model No. **BN2482-W** SAP No. **105283**

FABRIC

- 11-ounce, 45% cotton / 44% modal / 7% nylon / 4% spandex FR high power Force ponte

FEATURES

- Meets the performance requirements of NFPA 70E
- UL® classified to NFPA 2112
- FastDry® technology for quick wicking
- Rugged Flex® durable stretch technology for ease of movement
- Durable, stretch knit fabric fits close to the body
- Wide, stretch waistband prevents gapping in the back and offers a comfortable fit
- Closest fit through hip and thigh
- Front, back and utility pockets
- Reinforced knee panels for extra durability
- Skinny leg opening
- Built with stretch for movement, function, and comfort, this product is designed and intended to be slim fitting not compressive
- Imported

NEW



105283-N04
Black

CAT 2
EBT
(CAL/CM²)
19

ARC-RATED
NFPA
70E
COMPLIANT

NFPA
2112
UL CERTIFIED

ASTM
F1506
CERTIFIED



WAIST SIZES 2 – 20

SHORT INSEAM 30"
REGULAR INSEAM 32"
TALL INSEAM 34"

Women's Flame Resistant Rugged® Flex Twill Coverall

Model No. SAP No. 102450

FABRIC

- 7-ounce, 87% cotton / 7% high-tenacity nylon / 5% polyester / 1% spandex FR twill

FEATURES

- Meets the performance requirements of NFPA 70E / ASTM F1506
- UL® classified to NFPA 2112
- Built to move with Rugged Flex® stretch technology
- Triple-stitched main seams
- Stand-up collar with snap closure
- Brass zipper front with Nomex® FR zipper tape and inside and outside protective flaps
- Adjustable cuff with snap closure
- Back yoke with pleats for ease of movement
- Carhartt FR and NFPA 2112 / CAT 2 labels sewn on left chest pocket flap
- Two chest pockets with snap closures
- Two side-entry pass through pockets with snap closures
- Right-side tool and utility pocket; Two utility bands on chest; Left-chest pocket has pencil slot; Left sleeve upper arm pocket
- Brass leg zippers with Nomex® FR zipper tape
- Imported



102450-410
Dark Navy

CAT 2

ATPV
(CAL/CM²)
8.7

ARC RATED
NFPA
70E
COMPLIANT

NFPA
2112
UL CERTIFIED

ASTM
F1506
CERTIFIED



SIZES XS S M L XL XXL

SHORT INSEAM 30"
REGULAR INSEAM 32"
TALL INSEAM 34"

Women's Flame Resistant Full Swing® Quick Duck® Jacket

Model No. SAP No. 102694

HEAVYWEIGHT

FABRIC

- 8.5-ounce, 88% cotton / 12% nylon FR Quick Duck® canvas
- Sherpa fleece lining; 150g 3M™ Thinsulate™ Platinum FR Insulation

FEATURES

- Meets the performance requirements of NFPA 70E / ASTM F1506
- UL® classified to NFPA 2112
- All Full Swing® gear is built broken-in to help you move like you mean it 24/7
- Rain Defender® durable water repellent (DWR)
- Triple-stitched main seams
- Sherpa-lined hood with adjustable Nomex® FR drawcord
- Vislon® front zipper with Nomex® FR zipper tape and inner protective flaps
- Internal rib-knit storm cuffs
- Carhartt FR label sewn on pocket; NFPA 2112 / CAT 3 labels sewn on side seam
- Two lower-front zip pockets
- Two inner FR hook-and-loop patch pockets
- Back length: Medium: 27.75"
- Imported

MATCHING MEN'S STYLE AVAILABLE



102694-410
Dark Navy



102694-211
Carhartt Brown

CAT 2

ATPV
(CAL/CM²)
35

ARC RATED
NFPA
70E
COMPLIANT

NFPA
2112
UL CERTIFIED

ASTM
F1506
CERTIFIED



REGULAR XS S M L XL XXL



HIGH VISIBILITY

**HIGH-PERFORMANCE GEAR WITH A HIGHER
PURPOSE: KEEPING YOUR PEOPLE SAFE**

KIT SHIRTS

SWATS

WOVEN SHIRTS

WORK JEANS, PANTS & SHORTS

RAINWEAR & OUTERWEAR

ACCESSORIES

WORK BOOTS

WOMEN'S GEAR

FR

FR-WOMEN'S

HI-VIS

LICENSEES

ADDITIONAL INFO

Loose Fit Heavyweight Short-Sleeve Pocket T-Shirt

Model No. **K87-M** SAP No. **K87**

FABRIC

- 6.75-ounce, 100% cotton jersey knit

FEATURES

- Rib-knit crewneck
- Side-seam construction minimizes twisting
- Left-chest pocket with sewn-on Carhartt label
- Tagless neck label
- Imported
- *Prev. Name:* Workwear Pocket Short-Sleeve T-Shirt



K87-BLM
Brite Lime



K87-BOG
Brite Orange

REGULAR S M L XL 2XL

BIG 3XL 4XL 5XL

TALL L XL 2XL 3XL 4XL

Loose Fit Heavyweight Long-Sleeve Pocket T-Shirt

Model No. **TK0126-M** SAP No. **K126**

FABRIC

- 6.75-ounce, 100% cotton jersey knit

FEATURES

- Rib-knit crewneck and cuffs
- Side-seam construction minimizes twisting
- Left-chest pocket with sewn-on Carhartt label
- Tagless neck label
- Imported
- *Prev. Name:* Workwear Pocket Long-Sleeve T-Shirt



K126-BLM
Brite Lime



K126-BOG
Brite Orange

REGULAR S M L XL 2XL

BIG 3XL 4XL 5XL

TALL L XL 2XL 3XL 4XL

Loose Fit Midweight Sweatshirt			
Model No.	TS0121-M	SAP No.	K121
FABRIC · 10.5-ounce, 50% cotton / 50% polyester blend FEATURES · Attached three-piece hood with drawcord closure · Front handwarmer pocket · Stretchable, spandex-reinforced rib-knit cuffs and waistband · Carhartt-strong triple-stitched main seams · Carhartt label sewn on pocket · Imported · <i>Prev. Name:</i> Midweight Hooded Sweatshirt			



K121-BLM
Brite Lime



K121-BOG
Brite Orange

REGULAR S M L XL 2XL

BIG 3XL 4XL

TALL L XL 2XL 3XL

Loose Fit Midweight Full-Zip Sweatshirt			
Model No.	TS0122-M	SAP No.	K122
FABRIC · 10.5-ounce, 50% cotton / 50% polyester blend FEATURES · Attached three-piece hood with drawcord closure · Full-length brass front zipper · Two front hand-warmer pockets · Stretchable, spandex-reinforced rib-knit cuffs and waistband · Carhartt label sewn on pocket · Imported · <i>Prev. Name:</i> Midweight Hooded Front-Zip Sweatshirt MATCHING WOMEN'S STYLE AVAILABLE IN SELECT COLORS			



K122-BLM
Brite Lime



K122-BOG
Brite Orange

REGULAR S M L XL 2XL

BIG 3XL 4XL

TALL L XL 2XL 3XL

Force Color Enhanced Short-Sleeve T-Shirt

Model No.	SAP No.	100493
-----------	---------	--------

RELAXED FIT

FABRIC

- 4.25-ounce bird's-eye knit: 100% polyester

FEATURES

- Built with Force technology to wick sweat and dry fast
- FastDry® technology wicks away sweat for comfort
- Stain Breaker® technology releases stains
- Rib-knit crewneck collar
- Left-chest pocket
- Side-seamed construction minimizes twisting
- Square hem
- Tagless neck label
- Imported



100493-323
Brite Lime



100493-824
Brite Orange



REGULAR XS S M L XL 2XL

BIG 3XL 4XL

TALL L XL 2XL 3XL

Force Color Enhanced Long-Sleeve T-Shirt

Model No.	SAP No.	100494
-----------	---------	--------

RELAXED FIT

FABRIC

- 4.25-ounce bird's-eye knit: 100% polyester

FEATURES

- Built with Force technology to wick sweat and dry fast
- FastDry® technology keeps you cool for all day comfort
- Stain Breaker® technology releases stains
- Side-seamed construction minimizes twisting
- Left-chest pocket with sewn-on Carhartt patch
- Tagless neck label
- Imported



100494-323
Brite Lime



100494-824
Brite Orange



REGULAR XS S M L XL 2XL

BIG 3XL 4XL

TALL L XL 2XL 3XL

Force High-Visibility Short-Sleeve Class 2 T-Shirt

Model No. SAP No. 100495

RELAXED FIT

FABRIC

- 4.25-ounce bird's-eye knit: 100% polyester

FEATURES

- Meets ANSI/ISEA 107 standard
- Meets ANSI Class 2, Type R visibility standard; 3M™ Scotchlite™ reflective material; Segmented trim (#5510) maintains performance through 75 home launderings
- Built with Force technology to wick sweat and dry fast
- FastDry® technology keeps you cool for all day comfort
- Stain Breaker® technology releases stains
- Left-chest pocket with sewn-on Carhartt patch
- Tagless neck label
- Imported



100495-323
Brite Lime



Trim Detail



100495-824
Brite Orange

ANSI
CLASS
TYPE R 2



REGULAR S M L XL 2XL

BIG 3XL 4XL

TALL L XL 2XL 3XL

Force High-Visibility Long-Sleeve Class 3 T-Shirt

Model No. SAP No. 100496

RELAXED FIT

FABRIC

- 4.25-ounce bird's-eye knit: 100% polyester

FEATURES

- Meets ANSI/ISEA 107 standard
- Meets ANSI Class 3, Type R visibility standard; 3M™ Scotchlite™ reflective material; Segmented trim (#5510) maintains performance through 75 home launderings
- Built with Force technology to wick sweat and dry fast
- FastDry® technology keeps you cool for all day comfort
- Stain Breaker® technology releases stains
- Left-chest pocket with sewn-on Carhartt patch
- Tagless neck label
- Imported



100496-323
Brite Lime



Trim Detail



100496-824
Brite Orange

ANSI
CLASS
TYPE R 3



REGULAR S M L XL 2XL

BIG 3XL 4XL

TALL L XL 2XL 3XL

High-Visibility Rain Defender Loose Fit Midweight Class 3 Sweatshirt

Model No. **TS4987-M** SAP No. **104987**

FABRIC

- 10.5-ounce, 100% polyester fabric

FEATURES

- Rain Defender® durable water repellent (DWR)
- Three-piece hood with adjustable drawcord
- Stretchable, Spandex-reinforced rib-knit cuffs and waistband
- Two front handwarmer pockets with flaps for added security
- Hidden media pocket
- Locker loop facilitates hanging
- Carhartt label sewn on pocket
- ANSI Class 3, Type R compliant 3M™ Scotchlite™ Reflective Material
- Segmented trim (#5510) maintains performance through 75 home launderings
- Meets ANSI / ISEA 107
- Imported

NEW

ANSI
CLASS
TYPE R **3**



104987-BLM
Brite Lime



Trim Detail



104987-BOG
Brite Orange



REGULAR S M L XL 2XL

BIG 3XL 4XL

TALL L XL 2XL 3XL

High-Visibility Rain Defender® Loose Fit Midweight Thermal-Lined Full-Zip Class 3 Sweatshirt

Model No. **TS4988-M** SAP No. **104988**

FABRIC

- 10.5-ounce, 100% polyester fabric

FEATURES

- Rain Defender® durable water repellent (DWR)
- 100%polyester thermal lining
- Three-piece thermal-lined hood with adjustable drawcord
- Stretchable, Spandex-reinforced rib-knit cuffs and waistband
- Vislon Zipper front closure with storm flap
- Two front handwarmer pockets with flaps for added security
- Hidden media pocket
- Locker loop facilitates hanging
- Carhartt label sewn on pocket
- ANSI Class 3, Type R compliant 3M™ Scotchlite™ Reflective Material
- Segmented trim (#5510) maintains performance through 75 home launderings
- Meets ANSI / ISEA 107
- Imported

NEW

ANSI
CLASS
TYPE R **3**



104988-BLM
Brite Lime



Trim Detail



104988-BOG
Brite Orange



REGULAR S M L XL 2XL

BIG 3XL 4XL

TALL L XL 2XL 3XL

High-Visibility Storm Defender® Loose Fit Lightweight Class 3 Jacket			
Model No.	OJ5300-M	SAP No.	105300
FABRIC · 5.25-ounce, 100% polyester twill 3-Layer with Storm Defender® waterproof breathable technology			
FEATURES · Meets ANSI / ISEA 107 standard · Meets ANSI Class 3, Type R visibility standard · 3M™ Scotchlite™ reflective material · Segmented Trim #5510 maintains performance through 75 home launderings · Fully-taped waterproof seams · Attached hood with drawcord adjuster · Full-length waterproof zipper and storm flap · Two zipper secure lower pockets · Two interior drop in pocket with hook and loop closure · Hook-and-loop adjustable cuffs · Drop-tail hem · Imported			

NEW

ANSI
CLASS
TYPE R **3**



105300-BLM
Brite Lime



Trim Detail



REGULAR S M L XL 2XL

BIG 3XL 4XL

High-Visibility Class 3 Waterproof Sherwood Jacket / Quilt Lined	
Model No.	SAP No. 100787
FABRIC · 250-denier, 100% polyester shell; Waterproof membrane and Rain Defender® durable water repellent · Quilted brushed polyester lining	
FEATURES · Meets ANSI/ISEA 107 standard · Meets ANSI Class 3, Type R visibility standard; 3M™ Scotchlite™ reflective material; Segmented trim (#5510) maintains performance through 75 home launderings · Rain Defender® durable water repellent (DWR) · Fully-taped waterproof seams · Snap-on quilt-lined hood with drawcord closure and barrel-lock adjusters · Full-zip front with snap-button storm flap · Internal stretch-polyester storm cuffs with ergonomically shaped sleeve hems · Two front utility bands · Right chest pocket with flap and hook and loop closure; Left chest map pocket with waterproof zipper closure · Left sleeve pocket with flap and hook-and-loop closure · Two lower-front double pockets with top and side entry · Back length: Large regular: 30.75" · Imported	

ANSI
CLASS
TYPE R **3**



100787-323
Brite Lime



Trim Detail



REGULAR S M L XL 2XL

BIG 3XL 4XL

High-Visibility Class E Waterproof Pant / Unlined

Model No. SAP No. 103208

FABRIC

- 250-denier, 100% polyester shell

FEATURES

- Waterproof membrane and Rain Defender® durable water repellent
- Meets ANSI / ISEA 107 standard
- Meets ANSI Class E, Type R visibility standard
- Zip-to-knee leg zippers with double storm-channel flaps
- Hook-and-loop-adjustable tabs at leg openings
- Double-front with cleanout bottoms that can accommodate knee pads
- Two back patch pockets with flaps and hook-and-loop closure
- Two utility and tool pockets
- Reinforced polyester bottom kick panels
- Elastic waistband with adjustable drawcord
- Inseam: Regular: 31 inches
- Imported



103208-323
Brite Lime

ANSI
CLASS
TYPE R **3**



REGULAR S M L XL 2XL

BIG 3XL 4XL

TALL L XL 2XL

High-Visibility Class 2 Vest

Model No. SAP No. 100501

FABRIC

- 100% polyester mesh

FEATURES

- Meets ANSI/ISEA 107 standard
- Meets ANSI Class 2, Type R visibility standard; 3M™ Scotchlite™ reflective material; Segmented trim (#8906) maintains performance through 30 home launderings
- Triple-stitched main seams
- Hook-and-loop front closure
- Left-chest pocket with pen stall
- Imported



100501-323
Brite Lime

ANSI
CLASS
TYPE R **2**

REGULAR S M L XL 2XL

BIG 3XL 4XL





FOOTWEAR

**BECAUSE YOUR CREW CAN ONLY WORK
AS HARD AS THEIR BOOTS DO**

Ground Force Waterproof 6-Inch Work Boot		
Model No.	Composite Toe	CME6355 CME6351
FEATURES <ul style="list-style-type: none"> Upper: Oil tanned leather Outsole: Cement constructed with Carhartt rubber Ground Force outsole Revolutionary light and high rebound EVA midsole with Insite® Technology footbed Molded rubber toe bumper with abrasion resistant rubber heel Storm Defender® waterproof breathable membrane Imported Safety toe ASTM F2413-18 EH 		



CME6355
Brown (Composite Toe)



CME6351
Black (Composite Toe)



MEDIUM 8 – 12, 13, 14

WIDE 8 – 12, 13, 14, 15

Ground Force Waterproof 8-Inch Work Boot		
Model No.	Composite Toe	CME8355
FEATURES <ul style="list-style-type: none"> Upper: Brown oil tanned leather Outsole: Cement constructed with Carhartt rubber Ground Force outsole Revolutionary light and high rebound EVA midsole with Insite® Technology footbed Molded rubber toe bumper with abrasion resistant rubber heel Storm Defender® waterproof breathable membrane Imported Safety toe ASTM F2413-18 EH 		



CME8355
Brown (Composite Toe)



MEDIUM 8 – 12, 13, 14

WIDE 8 – 12, 13, 14, 15

Ground Force Waterproof Insulated 8-Inch Work Boot

Model No.	Composite Toe	CME8347
	Soft Toe	CME8047

FEATURES

- Upper: Brown oil tanned leather
- Outsole: Revolutionary light and high rebound EVA midsole with Insite® Technology footbed
- EVA midsole with dual foam Insite® Technology footbed
- Abrasion resistant rubber heel.
- Storm Defender® waterproof breathable membrane and 600g 3M™ Thinsulate™ insulation
- Imported
- Safety toe ASTM F2413-18 EH
- Soft toe ASTM F2892-18 EH



CME8347 - Brown (Composite Toe)
CME8047 - Brown (Soft Toe)



MEDIUM 8 – 12, 13, 14

WIDE 8 – 12, 13, 14, 15

Mudrunner Waterproof Rubber Boot

Model No.	15" Nano Composite Toe	CMV1451
	10" Soft Toe	CMV1121
	15" Soft Toe	CMV1151

FEATURES

- Upper: Black rubber and neoprene
- Outsole: Vulcanized construction with Carhartt rubber compound
- Supportive Insite® Technology footbed
- Waterproof neoprene upper
- Imported
- Safety Toe ASTM F2413-18 EH
- Soft toe ASTM F2892-18 EH



CMV1451 - 15" Black (Nano Toe)
CMV1151 - 15" Black (Soft Toe)



CMV1121
10" Black (Soft Toe)



MEDIUM 7, 8, 9, 9.5, 10, 10.5, 11, 11.5, 12, 13, 14, 15

Rugged Flex® 6-Inch Work Boot

Model No.	Composite Toe	CMF6366
	Soft Toe	CMF6066
	Women's Composite Toe	CWF5355

FEATURES

- Upper: Brown oil tanned leather
- Outsole: Cement construction with Carhartt rubber Rugged Flex® outsole
- EVA midsole with PU strobel pad
- PU with foam cushion insoles
- FastDry® technology lining wicks away sweat
- Imported
- Safety toe ASTM F2413-18 EH
- Soft toe ASTM F2892-18 EH



CMF6366 - Brown (Composite Toe)
CMF6066 - Brown (Soft Toe)
CWF5355 - Women's Brown (Composite Toe)



MEDIUM 8 – 12, 13, 14

WIDE 8 – 12, 13, 14, 15

M/W MULTIFIT (CWF5355) 6 – 10, 11

Rugged Flex® Waterproof 6-Inch Work Boot

Model No.	Composite Toe	CMF6371
	Composite Toe	CMF6380

FEATURES

- Upper: Oil tanned leather
- Outsole: Cement constructed with Carhartt rubber Rugged Flex® outsole
- EVA midsole with PU strobel pad and PU with foam cushion insole
- Rubber toe and heel bumper
- Storm Defender® waterproof breathable membrane
- Imported
- Safety toe ASTM F2413-18 EH



CMF6371
Black (Composite Toe)



CMF6380
Brown (Composite Toe)



MEDIUM 8 – 12, 13, 14

WIDE 8 – 12, 13, 14, 15

Waterproof 6-Inch Wedge Boot

Model No.	Steel Toe	CMW6295 / CMW6275
	Soft Toe	CMW6095 / CMW6175

FEATURES

- Upper: Oil tanned leather
- Outsole: Goodyear welt construction with dual density Carhartt rubber outsole
- PU strobel pad with PU cushion insoles
- Storm Defender® waterproof breathable membrane
- FastDry® technology lining wicks away sweat
- Imported
- Safety toe ASTM F2413-18 EH
- Soft toe ASTM F2892-18 EH



CMW6295 - Brown (Steel Toe)
CMW6095 - Brown (Soft Toe)



CMW6275 - Tan (Steel Toe)
CMW6175 - Tan (Soft Toe)



CMW6295/CMW6095 MEDIUM 7 – 12, 13, 14
CMW6275/CMW6175 MEDIUM 8 – 12, 13, 14

WIDE 7 – 12, 13, 14, 15
WIDE 8 – 12, 13, 14, 15

Force Waterproof 6-Inch Work Boot

Model No.	Nano Composite Toe	CMA6421
	Nano Composite Toe	CMA6425

FEATURES

- Upper: Abrasion resistant leather and nylon
- Outsole: Cement construction with Carhartt rubber Force outsole
- Revolutionary light and high rebound EVA midsole with Insite® Technology footbed
- Storm Defender® waterproof breathable membrane
- FastDry® technology lining wicks away sweat
- Imported
- Safety toe ASTM F2413-18 EH



CMA6421 - Black (Nano Composite Toe)



CMA6425 - Brown (Nano Composite Toe)



MEDIUM 8 – 12, 13, 14

WIDE 8 – 12, 13, 14, 15

Waterproof 6-Inch Work Boot		
Model No.	Steel Toe	CMW6220
	Soft Toe	CMW6120
FEATURES <ul style="list-style-type: none"> Upper: Brown oil tanned leather Outsole: Direct attached welt construction with dual density PU Carhartt Heritage outsole PU strobel pad with PU cushion insoles TPU heel guard with achilles flex joint Storm Defender® waterproof breathable membrane Imported Safety toe ASTM F2413-18 EH Soft toe ASTM F2892-18 EH 		



CMW6220 - Brown (Steel Toe)
CMW6120 - Brown (Soft Toe)



MEDIUM 8 – 12, 13, 14

WIDE 8 – 12, 13, 14, 15

Waterproof 11-Inch Wellington		
Model No.	Steel Toe	CMP1200
	Soft Toe	CMP1100
FEATURES <ul style="list-style-type: none"> Upper: Brown oil tanned leather and abrasion resistant Carstrong® durable fabric Outsole: Direct attached welt construction with dual density PU Carhartt Heritage outsole PU strobel pad with PU cushion insoles TPU heel guard with achilles flex joint Storm Defender® waterproof breathable membrane Imported Safety toe ASTM F2413-18 EH Soft toe ASTM F2892-18 EH 		



CMP1200 - Brown (Steel Toe)
CMP1100 - Brown (Soft Toe)



MEDIUM 8 – 12, 13, 14

WIDE 8 – 12, 13, 14, 15

Waterproof 8-Inch Climbing Work Boot

Model No.	Composite Toe	CML8360
	Insulated Composite Toe	CML8369

FEATURES

- Upper: Vintage saddle oil tanned leather and abrasion resistant Carstrong® durable fabric
- Outsole: Goodyear welt construction with Carhartt WoodWorks rubber outsole
- PU strobil pad with PU cushion insoles
- TPU heel stabilizer with achilles flex joint
- Storm Defender® waterproof breathable membrane
- 600g LiteFire insulation on the CML8369
- Imported
- Safety toe ASTM F2413-18 EH



CML8360 - Brown (Composite Toe)
CML8369 - Brown (Insulated Composite Toe)



MEDIUM 8 – 12, 13, 14

WIDE 8 – 12, 13, 14, 15

6-Inch Work Boot

Model No.	Steel Toe	CMW6274
	Soft Toe	CMW6174

FEATURES

- Upper: Brown oil tanned leather
- Outsole: Goodyear welt construction with Carhartt rubber outsole
- FastDry® technology lining wicks away sweat
- PU strobil pad with PU cushion insoles
- Padded collar and comfort tongue
- Imported
- Safety toe ASTM F2413-18 EH
- Soft toe ASTM F2892-18 EH



CMW6274 - Brown (Steel Toe)
CMW6174 - Brown (Soft Toe)



MEDIUM 8 – 12, 13, 14

WIDE 8 – 12, 13, 14, 15

Force 5-Inch Lightweight Sneaker Boot

Model No.	Nano Composite Toe	FA5415-M / FA5441-M
	Soft Toe	FA5015-M / FA5041-M

FEATURES

- Upper: Oil tanned leather with brown high abrasion resistant 1200D material
- Outsole: Cement construction with Carhartt rubber Force outsole
- Revolutionary light and high rebound EVA midsole with Insite® Technology footbed
- FastDry® technology lining wicks away sweat
- Imported
- Safety toe ASTM F2413-18 EH
- Soft toe ASTM F2892-18 EH



FA5415-M - Brown (Nano Composite Toe)
FA5015-M - Brown (Soft Toe)



FA5441-M - Black (Nano Composite Toe)
FA5041-M - Black (Soft Toe)



MEDIUM 8 – 12, 13, 14

WIDE 8 – 12, 13, 14, 15

Force SD Work Shoe

Model No.	Nano Composite Toe	CMD3441
-----------	--------------------	---------

FEATURES

- Upper: Black lightweight knit upper with abrasion resistant heel and toe
- Outsole: Cement constructed with Carhartt rubber Force outsole
- Revolutionary light and high rebound EVA midsole with Insite® Technology footbed
- FastDry® technology lining wicks away sweat
- Imported
- Safety toe ASTM F2413-18 SD 35



CMD3441
Black (Nano Composite Toe)



MEDIUM 8 – 12, 13, 14

WIDE 8 – 12, 13, 14, 15

Women's Waterproof 6-Inch Wedge Work Boot		
Model No.	Steel Toe	FW6225-W
	Soft Toe	FW6025-W / FW6021-W

- FEATURES**
- Upper: Oil tanned leather
 - Outsole: Goodyear welt construction with dual density Carhartt rubber outsole.
 - PU strobil pad with Insite® Technology footbed
 - Storm Defender® waterproof breathable membrane
 - FastDry® technology lining wicks away sweat
 - Imported
 - Safety toe ASTM F2413-18 EH
 - Soft toe ASTM F2892-18 EH



FW6225-W - Brown (Steel Toe)
FW6025-W - Brown (Soft Toe)



FW6021-W - Black (Soft Toe)



MEDIUM 6 – 10, 11

Women's Force SD Work Shoe		
Model No.	Nano Composite Toe	FA3411-W

- FEATURES**
- Upper: Black lightweight upper with abrasion resistant heel, toe and sides
 - Outsole: Cement constructed with Carhartt rubber Force outsole
 - Revolutionary light and high rebound EVA midsole with Insite® technology footbed
 - FastDry® technology lining wicks away sweat
 - Imported
 - Safety toe ASTM 2413-18 SD 35



FA3411-W
Black (Nano Composite Toe)



MEDIUM 6 – 10, 11



CARHARTT FOOTWEAR

For anyone who demands top-notch, all-day comfort, support, and protection in a pair of boots that truly outwork them all. Like everything we build, Carhartt footwear is fortified with the long-lasting, rugged durability that hardworking feet depend on. Plus every boot we build comes battle-tested and ready to be put through the roughest conditions you've got. Offering a wide range of styles and materials to meet your workers' needs, Carhartt boots are available with safety features including ASTM F2413-18 certified safety toe (I75/C75), electrical hazard (EH), static dissipative (SD), metatarsal (MT), and puncture resistance (PR). ASTM F2892-18 certified soft toe boot are also available for electrical hazard (EH) and static dissipative (SD). In addition, some styles offer heel guards to provide ankle stability and side impact coverage. Wherever the jobsite — whatever it takes — our high performance, protective boots have you covered.



carhartt

Black Diamond Group / Carhartt Footwear
Contact: Jarrod Beard
Director of Industrial Sales, Carhartt Footwear

Phone: (614) 886-2504
Customer Service: (855) 277-8944
Email: jbeard@bdboots.com



LICENSEES

**HEAD-TO-TOE PROTECTION WITH LICENSED
PRODUCTS TO OUTWORK THEM ALL**

LICENSEES

Carhartt licenses the manufacture and marketing of certain products to other companies. For sales information, marketing materials, and product images for Carhartt-licensed products, please contact the company representatives listed below.

CARHARTT WORK BAGS, PACKS & GEAR

Built on the mission to serve and protect hardworking people, Carhartt and Signature Products Group have worked as one to forge packs, bags, and other gear-haulers that work as hard as you do. On the same crew since 2018, Carhartt and SPG create rugged, durable products beyond just head-to-toe solutions, across multiple accessory categories. Gear that's constructed using the toughest, highest-quality fabric, fortified with triple-needle stitching, and engineered with water-repellent Carhartt Rain Defender® technology for a product that's fit for the next frontier of work.



Contact: Customer Service, Carhartt division
Phone: (801) 433-5542 Ext. 5588
Email: customerservice@spgcompany.com
Website: spgdealer.com

CARHARTT GLOVES, BASELAYER AND UNDERWEAR

Since 2010, Carhartt and Gordini have been partners in protection, offering the toughest, most work- and weather-ready gloves on the market. With proven materials and patented technology, our gloves offer superior grip, dexterity and breathability for top performance on any jobsite. Leveraging Carhartt FORCE® for sweat and odor protection, and Rugged Flex® for ultimate layering, our complete line of Carhartt Base Layer and Underwear offers next-to-skin comfort for hardworking men and women. In 2022, Gordini is proud to bring our expertise in all-day comfort and durability to Carhartt Socks, with a range of heights and weights to keep feet dry and blister-free year round.



Gordini USA, Inc.
Contact: Customer Service
Phone: (800) 467-3464
Email: carharttcustomerservice@gordini.com
Website: <https://directgloves.carhartt.com>

CARHARTT SAFETY EYEWEAR

Backed by the combined strength of industry-leading safety eyewear experts, Pyramex, and the renowned rugged reliability of Carhartt, we are proud to offer the Carhartt Safety Eyewear range. Carhartt Safety Eyewear is purpose-built to stand up to the harshest demands of today's workforce. Whether on the assembly line or in the field, durable dependability keeps workers at their most protected – and productive. All models meet the ANSI Z87.1+ standards and provide 99% protection from harmful UV rays.



Pyramex Safety
Contact: Andy Eschbach
Phone: (800) 736-8673
Fax: (901) 861-4967
Email: aeschbach@pyramex.com
Website: www.pyramexsafety.com/carhartt



KIT SHIRTS

SWETS

WOVEN SHIRTS

WORK JEANS, PANTS & SHORTS

RAINWEAR & OUTERWEAR

ACCESSORIES

FOOTWEAR

WOMEN'S GEAR

FR

FR-WOMEN'S

HI-VIS

LICENSEES

ADDITIONAL INFO



ADDITIONAL INFO

KEEP YOUR CREW SAFE, COMFORTABLE AND IN COMPLIANCE. CARHARTT IS HERE FOR YOU, 24/7.



PROPER CARE AND USE OF CARHARTT FR

PROPER CARE

Follow the **manufacturer care instructions** located on the inside tag of each FR garment, and these guidelines when home laundering your Carhartt FR:

- Wash garment with normal laundry detergent separately from non-FR garments in cold-warm water
- **DO NOT** use bleach (or detergents containing bleach/hydrogen peroxide)
- **DO NOT** use stain remover
- **DO NOT** use starch
- **DO NOT** use fabric softener/dryer sheets

PROPER USE

Follow **your company's** safety requirements to determine the standards and calorie rating your garment must meet when working in hazardous areas.

- Carhartt recommends flame-resistant clothing be worn as base layers under FR garments
- Garments should have a reasonable fit with no modifications that will reduce effectiveness
- Prevent additional exposure to skin (keep garments buttoned and sleeves rolled down)
- Keep shirts tucked in when in a hazardous area
- Do not apply DEET to FR clothing — **DEET IS FLAMMABLE**

USEFUL LIFE AND REPAIRS

Regularly inspect your FR garments. Replace garments once they are past their useful life:

- Torn/ripped fabric
- Open seams/holes
- Fabric is frayed or threadbare
- Garment has been bleached
- Garment is soiled with flammable substances

Carhartt FR clothing can be repaired. The FR fabrics and FR specific threads used for repairs should be equivalent in performance and FR characteristics to those used in the original construction of the garment.

CARHARTT FR IS GUARANTEED FLAME-RESISTANT FOR THE USEFUL LIFE OF THE GARMENT, PROVIDED MANUFACTURER CARE INSTRUCTIONS ARE FOLLOWED.

FREQUENTLY ASKED QUESTIONS

1 Who is Carhartt Flame-Resistant (FR) clothing designed for?

Carhartt FR clothing is designed for electricians and workers in the utility, oil, gas, and petrochemical fields who are at risk of exposure to electric arc flashes and flash fires, which could cause severe or fatal burn injuries. Typical candidates for FR clothing include electric linemen, pipeline and refinery workers, as well as industrial electricians.

2 How does Carhartt FR clothing help protect against burn injury?

Through the use of flame-resistant chemicals or fabric blends, Carhartt FR clothing is designed to self-extinguish within seconds after the source of ignition is removed, limiting the degree of burn and body burn percentage. It is not designed to be flameproof; it is flame-resistant.

3 Can the flame-resistant chemicals be washed out?

No. Carhartt FR clothing is guaranteed to be flame-resistant for the useful life of the garment regardless of the number of launderings, provided garment-care instructions are followed.

4 How can Carhartt FR clothing be distinguished from traditional Carhartt clothing?

Carhartt FR clothing is clearly identified with a “FR Carhartt” patch in place of the traditional Carhartt patch. Product hang tags and CAT labels also help distinguish Carhartt flame-resistant products.

5 What is an ATPV?

An Arc Thermal Performance Value (ATPV) is a rating assigned to flame-resistant clothing indicating the level of electrical arc flash protection provided. Higher-weight (e.g., thicker, denser) fabrics typically have higher ATPVs and provide increased protection (as does the layering of FR clothing). All Carhartt FR clothing has the ATPV marked on the inside label for easy reference.

6 What is EBT?

Like ATPV, Breakopen Threshold Energy (EBT) is a rating assigned to FR clothing indicating the level of protection provided. EBT is used when ATPV cannot be measured due to flame-resistant fabric breakopen. EBT is also measured in calories per centimeter squared (cal/cm^2).

7 Can Carhartt FR clothing be repaired?

Yes, Carhartt FR clothing can be repaired, but repairs must be made with fabrics and sewing threads that have at least the same FR characteristics as the original garment.

8 Is flame-resistant thread required for embroidery applications?

None of the current regulations governing the use of flame-resistant clothing specifically requires the use of flame-resistant thread for embroidery applications. However, Carhartt recommends using flame-resistant thread for embroidery or emblem attachment.

9 Can I use DEET on flame-resistant clothing?

No. DEET is one of the most effective mosquito repellents on the market, but it should only be used on the skin, never on FR clothing. For the most effective mosquito and tick protection, use DEET-based repellents on the skin (especially on exposed skin) and use a permethrin (the active ingredient in most lice shampoos) product washed into or applied to flame-resistant clothing. These products do not add any appreciable flammability to FR clothing and therefore do not affect its flame-resistant properties. When using permethrin in a spray form, use the **WATER-BASED** formulas only. Propellants are almost always flammable in this application, so the powder form washed into the clothing or the **WATER-BASED** spray formula is recommended.

PPE Category Ratings

carharttFR

What is a PPE category?

A PPE category is a rating for FR clothing based on the arc protection rating that indicates the level of protection the garment provides. There are four PPE categories ranging from 1 to 4, with a PPE category of 1 representing the least protection, and a PPE category of 4 representing the most protection. The NFPA 70E consensus standard assigns these categories based on the electrical maintenance tasks to be performed, and each PPE category relates to a specific range of arc protection. For example, PPE category 2 would include arc ratings greater or equal to 8 cal/cm² but less than 25 cal/cm².

**PPE
CATEGORY (CAT)**
1:
4 CAL/CM² MINIMUM

**PPE
CATEGORY (CAT)**
2:
8 CAL/CM² MINIMUM

**PPE
CATEGORY (CAT)**
3:
25 CAL/CM² MINIMUM

**PPE
CATEGORY (CAT)**
4:
40 CAL/CM² MINIMUM

FR SAFETY REGULATIONS



OSHA General Duty Clause

- Employers are required to provide their employees with a place of employment that is free from recognizable hazards that are causing or likely to cause death or serious harm to employees.

OSHA 1910.269

- Federal regulation that defines the safety practices of employees working in the generation, transmission and distribution of electricity.
- Prohibits clothing that, when exposed to flames or arcs, could increase the extent of wearer injury. Employers must determine appropriate clothing based on an evaluation of potential hazards in the work environment. Clothing made from flame-resistant materials is acceptable under the rule; i.e., clothing that meets the requirements of ASTM F1506.
- The employer shall ensure that each employee exposed to potential hazards from electric arcs wears protective clothing and other protective equipment with an arc rating greater than or equal to the heat energy estimate whenever that estimate exceeds the heat energy of 2.0 cal/cm²
- The 2014 revision to the regulation requires that as of April 1, 2015, employers must provide protective equipment sufficient to cover the employee's entire body.
- Acceptable FR clothing shall conform to the requirements of ASTM F-1506, and must have an appropriate arc rating (Arc Thermal Performance Value [ATPV], or Breakopen Threshold Energy [EBT]). The arc rated clothing must be rated at or above the potential hazard from an arc flash exposure.



National Electric Safety Code

- National Electrical Safety Code (NESC) sets rules for safeguarding personnel during installation, operation, or maintenance of electric supply and communication lines and associated equipment.



Standard for electrical safety in the workplace

- The NFPA 70E standard addresses electrical hazards in the workplace and supplements the NESC by focusing on protecting the worker from electrical hazards. The objective of this standard is to provide protection to workers based on the potential electrical exposure energy to which they could be exposed. NFPA 70E mandates that employers conduct a hazard risk assessment to determine the potential arc exposure for employees who work on or near energized parts or equipment.
- NFPA 70E requires that employees wear proper arc-rated flame-resistant (FR) clothing whenever there is possible exposure to an arc flash event sufficient to cause a second degree burn. Such FR protective clothing must be rated for protection from electric arcs so they can be properly matched to the appropriate hazard levels. This arc rating, or ATPV, appears on the labeling of all FR protective apparel for easy referencing. Matching the arc rating of the flame-resistant apparel with the hazard rating maximizes worker protection against the chance of burn injury or death.



Standard on flame-resistant clothing for protection of industrial personnel against short-duration thermal exposures from fire

- NFPA 2112 standard provides minimum requirements for the design, construction, evaluation, and certification of flame-resistant (FR) clothing for use by industrial personnel exposed to potential flash fire situations. It does not attempt to provide any guidance on matching the PPE to the quantified hazards – that is what NFPA 2113 is designed for.



Standard on the fundamentals of combustible dust

- NFPA 652 standard provides the general requirements for managing combustible dust fire and explosion hazards. It states that when FR clothing is required, it must comply with the requirements of NFPA 2112 and be selected, procured, inspected, worn, and maintained in accordance with NFPA 2113.



Standard on selection, care, use, and maintenance of flame-resistant garments for protection of industrial personnel against short-duration thermal exposures from fire

- Provides minimum requirements for the selection, care, use, and maintenance of flame-resistant garments compliant with NFPA 2112 for use in potential flash fire situations. This standard reduces the potential risks caused by incorrect maintenance, contamination, or damage to FR clothing.



American National Standard for high-visibility safety apparel and accessories

- ANSI/ISEA 107 provides performance requirements for conspicuous materials to be used in high-visibility safety apparel (HVSA) and specifies minimum amounts of background, retroreflective, and combined-performance materials. The 2020 edition continues to present three performance classes of garments based on the amount of visible materials and design attributes incorporated into the final garment configuration. The standard now identifies garment types based on expected use settings and work activities being performed. These are designated as off-road (type O), roadway and temporary traffic control (type R), or public safety activities (type P).

NEW CARHARTT NAMING CONVENTION IN ACTION

HOW TO INTERPRET NEW MODEL NUMBERS

Model numbers will be based on the following categories and sub-categories. The category is the first letter of the model number, the sub-category is the second letter of the model number.

e.g., Sweatshirt = **T** (Tops) + **S** (Sweatshirts): **TS**

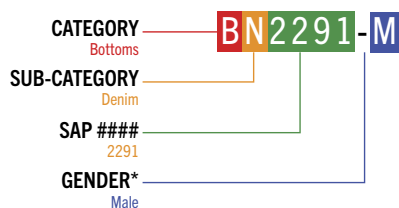
Non-Denim Bottoms = **B** (Bottoms) + **N** (Non-Denim): **BN**

The four-digit number following the letters will, most likely be tied to the last four digits of the SAP number. The last element of the style number is the gender of the clothing (-M or -W). If the style is unisex (like the A18), there will be no gender letter included.

Example: 102291

Current: 102291 Rugged Flex® Rigby Dungaree

New: BN2291-M Rugged Flex® Relaxed Fit Canvas Work Pant



*unless unisex

CATEGORY	SUB-CATEGORY
A – ACCESSORIES	H – HEADWEAR
	M – MISC
	B – BASELAYER
B – BOTTOMS	D – DENIM
	N – NON-DENIM
	S – SHORTS
T – TOPS	K – KNITS
	S – SWEATS
	W – WOSENS
	J – SHIRT JAC
	R – SWEATER
O – OUTERWEAR	R – BIBS
	J – JACKETS
	C – COATS
	V – VEST
	B – PANT
	X – COVERALL
	H – HOOD



WHAT ARE SOME NEW EXAMPLES?

Existing Style Name

102291 Rugged Flex® Rigby Dungaree



New Model Number & Descriptive Name
(starting Spring 21)
BN2291-M Relaxed Fit Canvas Work Pant

NEW NAMING DIFFERENCE: LINKED STYLES

WHEN THERE ARE WOMEN'S STYLES THAT HAVE BEEN INTENTIONALLY DESIGNED TO ALIGN WITH MEN'S, THOSE STYLES WILL SHARE SIMILAR STYLE NAMES AND MODEL NUMBERS, MAKING IT EASIER FOR INTERNAL TEAMS, RETAILERS AND CONSUMERS TO IDENTIFY WOMEN'S STYLES THAT ARE DESIGNED TO ALIGN WITH MEN'S.

Existing Style Name Men's

K288 M Midweight Signature Sleeve Logo Hooded Sweatshirt



New Style Name
(starting Spring 21)

TS0288-M Loose Fit Midweight Logo Sleeve Hooded Sweatshirt

Existing Style Name Women's

102791 Clarksburg Sleeve Logo Hooded Sweatshirt



New Style Name
(starting Spring 21)

TS0288-W Relaxed Fit Midweight Logo Sleeve Graphic Sweatshirt

CARHARTT FR LAYERED TESTING

Layered testing is the only way to determine the total arc rating for layered FR garments. Carhartt has conducted layered testing for a variety of combinations, using some of our most popular FR clothing styles. The resulting layered arc rating of the various combinations is listed in the table below for your reference.

Carhartt FR Fabric Outer Layer	Style Reference #	Outer Layer Solo ARC Rating	Carhartt FR Fabric Inner Layer	Style Reference #	Inner Layer Solo ARC Rating	Combined Layered ARC Rating
7 oz Twill, 88% Cotton 12% Nylon	FRS160 WFRS160	8.6 cal/cm ²	6.75 oz FR Jersey Knit 100% Cotton	100234 100235 100237	8.9 cal/cm ²	ATPV = 30 cal/cm ²
6 oz Twill, 88% Cotton 12% Nylon	FRS003	8.7 cal/cm ²	6.75 oz FR Jersey Knit 100% Cotton	100234 100235 100237	8.9 cal/cm ²	ATPV = 28 cal/cm ²
9 oz Twill, 100% Cotton	101017	11 cal/cm ²	6.75 oz FR Jersey Knit 100% Cotton	100234 100235 100237	8.9 cal/cm ²	ATPV = 33 cal/cm ²
7.0 oz 3x1 Twill, 87% Cotton/ 7%Nylon/5%Polyester/ 1% Spandex	102450 102459	8.7 cal/cm ²	6.75 oz FR Jersey Knit 100% Cotton	102685 102686 102687 101107	8.9 cal/cm ²	ATPV = 22 cal/cm ²
6.7 oz ANSI Yellow Pique, 48% Modacrylic/37% Lyocell/ 15% Aramid	102843 102905	8.2 cal/cm ²	6.0 oz FR jersey knit, 93% cotton/7 % spandex	102903 102904	7.4 cal/cm ²	ATPV = 27 cal/cm ²
7.0 oz Arapaho 3x1 Twill, 88% Cotton/12%Nylon	FRS160	8.6 cal/cm ²	6.0 oz FR Jersey Knit 93% Cotton/7 % Spandex	102903 102904	7.4 cal/cm ²	ATPV = 27 cal/cm ²
6.75 oz FR Jersey Knit, 100% Cotton	101698 100235 100237 101153	8.9 cal/cm ²	6.0 oz FR Jersey Knit 93% Cotton/7 % Spandex	102903 102904	7.4 cal/cm ²	ATPV = 24 cal/cm ²
7 oz Twill, 88% Cotton/12% Nylon	102150	8.9 cal/cm ²	6.75 oz FR Jersey Knit 100% Cotton	100234 100235 100237 101698 101153	8.9 cal/cm ²	ATPV = 29 cal/cm ²
7 oz Twill, 88% Cotton/12% Nylon	102150	8.9 cal/cm ²	6.0 oz FR Jersey Knit 93% Cotton/7 % Spandex	102903 102904	8.9 cal/cm ²	ATPV =26 cal/cm ²
13.0 oz HW Fleece with DWR Finish 56% Modacrylic /34%Lyocell/ 10% Aramid	102907 102908 102690	9.9 cal/cm ²	6.0 oz FR Jersey Knit 93% Cotton/7 % Spandex	102903 102904	7.4 cal/cm ²	ATPV = 32 cal/cm ²
13.0 oz HW Fleece with DWR Finish 56% Modacrylic /34%Lyocell/ 10% Aramid	102907 102908 102690	9.9 cal/cm ²	6.75 oz FR Jersey Knit 100% Cotton	100234 100235 100237 101698 101153	8.9 cal/cm ²	ATPV = 32 cal/cm ²
13.0 oz HW Fleece with DWR Finish 56% Modacrylic /34%Lyocell/ 10% Aramid	102907 102908 102690	9.9 cal/cm ²	7 oz Twill, 88% Cotton 12% Nylon	FRS160 WFRS160	8.6 cal/cm ²	ATPV = 33 cal/cm ²

Carhartt FR Fabric Outer Layer	Style Reference #	Outer Layer Solo ARC Rating	Carhartt FR Fabric Inner Layer	Style Reference #	Inner Layer Solo ARC Rating	Combined Layered ARC Rating
13.0 oz HW Fleece with DWR Finish 56% Modacrylic /34%Lyocell/ 10% Aramid	102907 102908 102690	9.9 cal/cm ²	6.75 oz FR Jersey Knit 100% Cotton	102685 102686 102687 101107	8.9 cal/cm ²	ATPV = 32 cal/cm ²
13.0 oz HW Fleece with DWR Finish 56% Modacrylic /34%Lyocell/ 10% Aramid	102907 102908 102690	9.9 cal/cm ²	7.0 oz 3x1 Twill, 87% Cotton/7%Nylon/ 5%Polyester/1% Spandex	102450 102459	8.7 cal/cm ²	ATPV = 31 cal/cm ²
13.0 oz HW Fleece with DWR Finish 56% Modacrylic /34%Lyocell/ 10% Aramid	102907 102908 102690	9.9 cal/cm ²	6.0 oz FR Twill 88% Cotton/12% Nylon	FRS003	8.7 cal/cm ²	ATPV = 33 cal/cm ²
4.7 oz Stellar Weave Woven with Anti-Microbial and Moisture Management Finish 50% Lenzing FR /38% Aramid/ 10% Polyamid/ 2% Anistat	104138	8.6 cal/cm ²	6.75 oz FR Jersey Knit 100% Cotton	100234 100235 100237 101153 101698	8.9 cal/cm ²	ATPV = 21 cal/cm ²
4.7 oz Stellar Weave Woven with Anti-Microbial and Moisture Management Finish 50% Lenzing FR /38% Aramid/ 10% Polyamid/ 2% Antistat	104138	8.6 cal/cm ²	6.0 oz FR Jersey Knit 93% Cotton/7 % Spandex	102903 102904	7.4 cal/cm ²	ATPV = 20 cal/cm ²
4.7 oz Stellar Weave Woven with Anti-Microbial and Moisture Management Finish 50% Lenzing FR /38% Aramid/ 10% Polyamid/ 2% Antistat	104138	8.6 cal/cm ²	6.1 oz FR Single Jersey 100% Cotton	104130 104372 104373 104508 104509	8.7 cal/cm ²	ATPV = 21 cal/cm ²
7 oz Twill, 88% Cotton 12% Nylon	FRS160	8.6 cal/cm ²	6.1 oz FR Single Jersey 100% Cotton	104130 104372 104373 104508 104509	8.7 cal/cm ²	ATPV = 29 cal/cm ²
4.7 oz Stellar Weave Woven with Anti-Microbial and Moisture Management Finish 50% Lenzing FR /38% Aramid/ 10% Polyamid/ 2% Antistat	104147	8.6 cal/cm ²	6.75 oz FR Jersey Knit 100% Cotton	102685 102686 102687 101107	8.9 cal/cm ²	ATPV = 21 cal/cm ²
13.0 oz/yd ² 441 g/m ² Duck, 100% FR Cotton	101627	16 cal/cm ²	.5 oz/yd ² 288 g/m ² Canvas, 88% FR Cotton 12% Nylon	FRB159 FRB240	12.1 cal/cm ²	ATPV = 19 cal/cm ²

Testing conducted for Carhartt, Inc. by Kinectrics High Current Laboratory, Toronto, Ontario, Canada.

CUSTOM NON-STOCK SIZING

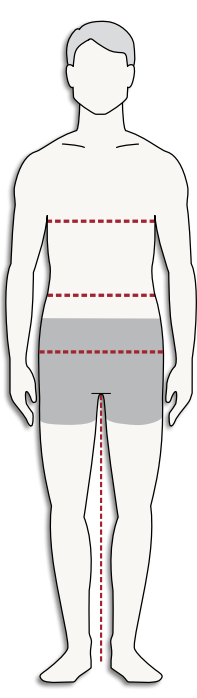
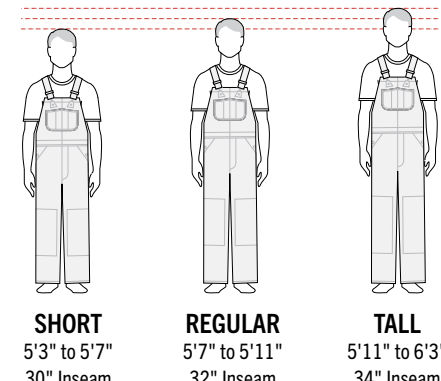
Some styles come in sizes that don't work with the majority of customers. So when one or more of these non-stock sizes is needed, they require longer lead times (typically 8-10 weeks), freight charges, order increments (by style multiples of minimum order number), and an "ALL ORDERS FINAL" return policy (no returns outside manufacturer defect). For more information on placing a custom order, call Customer Service at **800-786-3916**. Orders can be placed by email at CYC@carhartt.com or by faxing them to **800-217-2895**.

Refers to Style #	Non-Stock Style #	Product Name	Refers to Style #	Non-Stock Style #	Product Name
B11	102170	Non-Stock Loose Fit Washed Duck Utility Work Pant	101618	101642	Non-Stock Flame-Resistant Duck Traditional Coat/Quilt-Lined
B13	102169	Non-Stock Loose Fit Utility Jean	101621	101649	Non-Stock Flame-Resistant Duck Active Jac/Quilt-Lined
B17	102168	Non-Stock Relaxed Fit Heavyweight 5-Pocket Tapered Jean	101626	101640	Non-Stock Flame-Resistant Duck Active Jac/Quilt-Lined
B151	102171	Non-Stock Loose Fit Canvas Utility Work Pant	101627	101641	Non-Stock Flame-Resistant Duck Bib Overall/Unlined
C003	102646	Non-Stock Duck Traditional Coat	101698	102594	Non-Stock Flame-Resistant Force Cotton Hybrid Shirt
FRB13	101656	Non-Stock Flame-Resistant Signature Denim Dungaree	102179	102957	Non-Stock Flame-Resistant Full Swing™ Quick Duck® Jacket
FRB100	101658	Non-Stock Flame-Resistant Signature Denim Jean-Relaxed Fit	102182	102956	Non-Stock Flame-Resistant Full Swing™ Quick Duck® Coat
FRB159	101661	Non-Stock Flame-Resistant Midweight Canvas Jean - Loose Fit	102199	102972	Non-Stock Rain Defender® Relaxed Fit Heavyweight Softshell Jacket
FRB240	101662	Non-Stock Flame-Resistant Canvas Cargo Pant	102291	102630	Non-Stock Rain Defender® Relaxed Fit Heavyweight Softshell Jacket
FRS003	101681	Non-Stock Flame-Resistant Canvas Cargo Pant	102537	103199	Non-Stock Rugged Professional™ Series Relaxed Fit Canvas Short-Sleeve Work Shirt
FRS160	101680	Non-Stock Flame-Resistant Classic Twill Shirt	102538	103200	Non-Stock Rugged Professional™ Series Relaxed Fit Canvas Long-Sleeve Work Shirt
J140	102151	Non-Stock Loose Fit Firm Duck Insulated Flannel-Lined Active Jac	102776	104007	Non-Stock Relaxed Fit Duck Bib Overall
K84	102982	Non-Stock Loose Fit Firm Duck Insulated Flannel-Lined Active Jac	102808	104119	Non-Stock Rugged Flex® Relaxed Fit Utility Jean
K87	102652	Non-Stock Loose Fit Firm Duck Insulated Flannel-Lined Active Jac	102843	102963	Non-Stock Flame-Resistant High-Visibility Force Hybrid Shirt
K121	102980	Non-Stock Loose Fit Midweight Sweatshirt	102903	102993	Non-Stock Flame-Resistant Force Short-Sleeve T-Shirt
K122	102650	Non-Stock Loose Fit Midweight Full-Zip Sweatshirt	102904	102994	Non-Stock Flame-Resistant Force Long-Sleeve T-Shirt
K126	102653	Non-Stock Loose Fit Heavyweight Long-Sleeve Pocket T-Shirt	102905	102995	Non-Stock Flame-Resistant High-Visibility Force Long-Sleeve T-Shirt -Class 3
K128	B13	Non-Stock Loose Fit Heavyweight Long-Sleeve Pocket Henley T-Shirt	103109	103205	Non-Stock Rugged Professional™ Series Rugged Flex® Relaxed Fit Canvas Work Pant
K570	102981	Non-Stock Loose Fit Midweight Short-Sleeve Pocket Polo	103111	103204	Non-Stock Rugged Professional™ Series Rugged Flex® Relaxed Fit Canvas Work Short
100234	101669	Non-Stock Flame-Resistant Force Cotton Short-Sleeve T-Shirt	104138	104324	Non-Stock Flame-Resistant Force Lightweight 4.7 oz Performance Shirt
100235	101670	Non-Stock Flame-Resistant Force Cotton Long-Sleeve T-Shirt	104277	104567	Non-Stock Loose Fit Washed Duck Sherpa-Lined Mock-Neck Vest
100237	101671	Non-Stock Flame-Resistant Force Cotton Long-Sleeve Henley	104616	105642	Force Relaxed Fit Midweight Short-Sleeve Pocket T-Shirt
100493	102631	Non-Stock Force Color Enhanced Short-Sleeve T-Shirt	104617	105643	Force Relaxed Fit Midweight Long-Sleeve Pocket T-Shirt
104050	104565	Non-Stock Loose Fit Washed Duck Insulated Active Jac	104670	105644	Non-Stock Storm Defender® Loose Fit Heavyweight Jacket
100614	103901	Non-Stock Rain Defender® Loose Fit Heavyweight Full-Zip Sweatshirt			
100615	103902	Non-Stock Rain Defender® Loose Fit Heavyweight Sweatshirt			
100791	101663	Non-Stock FR Washed Duck Work Pant			
101017	101647	Non-Stock Flame-Resistant Traditional Twill Coverall			

MEN'S BODY MEASUREMENTS

	SMALL		MEDIUM		LARGE		X-LARGE		2X-LARGE		3X-LARGE		4X-LARGE		5X-LARGE		6X-LARGE	
Chest	34	36	38	40	42	44	46	48	50	52	54	56	58	60	62	64	66	68
Waist	28	30	32	34	36	38	40	42	44	46	48	50	52	54	56	58	60	62
Hip (Seat)	34	36	38	40	42	44	46	48	50	52	54	56	58	60	62	64	66	68

NOTE: If your measurement falls between sizes, buy the larger size.

HOW TO MEASURE	HEIGHT CHART										
 <p>Chest: Measure just under arms and across shoulder blades holding the tape firm and level. If your chest falls between sizes, order the next size up.</p> <p>Natural Waist: Bend side to side and find the natural bend in your body; this is your natural waist. Note: It may not be the smallest point.</p> <p>Hip/Seat: Measure the fullest point between your natural waist and crotch.</p> <p>Inseam: Measure from your crotch to the desired length on body. You may also measure pants that you currently own and like. Lay the garment flat and smooth out. Measure on the front from the crotch point along the seam to the hem for the inseam length.</p> <p>For best results, measure over your undergarments.</p>	 <p>SHORT 5'3" to 5'7" 30" Inseam</p> <p>REGULAR 5'7" to 5'11" 32" Inseam</p> <p>TALL 5'11" to 6'3" 34" Inseam</p> <p>PANTS & SHORTS FITS</p> <table border="1"> <tr> <td>Straight Fit</td> <td>Slim seat and thigh</td> </tr> <tr> <td>Relaxed Fit</td> <td>Relaxed seat and thigh</td> </tr> <tr> <td>Loose Fit</td> <td>Full seat and thigh</td> </tr> </table> <p>TOPS FITS</p> <table border="1"> <tr> <td>Relaxed Fit</td> <td>A closer fit to the body</td> </tr> <tr> <td>Loose Fit</td> <td>The most room to move</td> </tr> </table>	Straight Fit	Slim seat and thigh	Relaxed Fit	Relaxed seat and thigh	Loose Fit	Full seat and thigh	Relaxed Fit	A closer fit to the body	Loose Fit	The most room to move
Straight Fit	Slim seat and thigh										
Relaxed Fit	Relaxed seat and thigh										
Loose Fit	Full seat and thigh										
Relaxed Fit	A closer fit to the body										
Loose Fit	The most room to move										

WOMEN'S BODY MEASUREMENTS

	X-Small	Small		Medium		Large		X-Large		XXL	
	2	4	6	8	10	12	14	16	18	20	
Bust	33	34	35	36	37	38½	40	41½	43½	45½	47½
Natural Waist	27	28	29	30	31	32½	34	35¾	38	40¼	42½
Hip (Seat)	36	37	38	39	40	41½	43	44½	46½	48½	50½

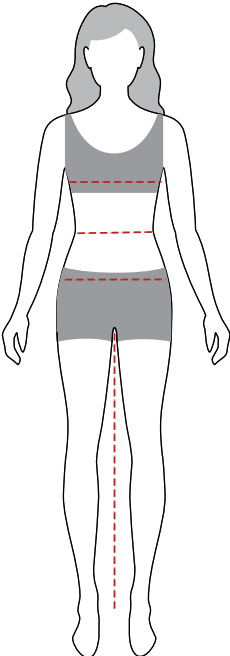
- For Outerwear, Bibs, and Tops: If you prefer a slimmer fit or are between sizes, try sizing down.
- For Bottoms: If your measurement falls between sizes, buy the larger size.

A TRUE PLUS FIT FOR GREATER MOVEMENT, COVERAGE, AND COMFORT

At Carhartt, we're proud to build products that serve and protect hardworking Carhartt women, now in a more inclusive size range. Our product development team has perfected our plus size design and fit with comfortable necklines, longer body lengths for coverage, and enhanced shaping built to service a wide range of body types and shapes - all crafted with the same legendary Carhartt quality.

	1X		2X		3X	
	16W	18W	20W	22W	24W	26W
Bust	44	46	48	50	52	54
Natural Waist	38 ¾	40 ¾	42 ¾	44 ¾	46 ¾	48 ¾
Hip	46 ½	48 ½	50 ½	52 ½	54 ½	56 ½

HOW TO MEASURE



Bust:
Measure the fullest part of your bust, keeping the measuring tape parallel to the floor

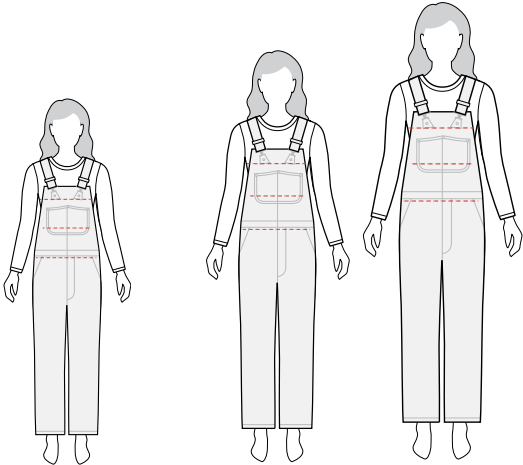
Natural Waist:
Bend side to side and find the natural bend in your body; this is your natural waist.
Note: It may not be the smallest point.

Hips:
Measure the fullest part of your hips, approximately 8" below the natural waist.

Inseam:
Measure from your crotch down to the desired length on body. You may also measure pants that you currently own and like. Lay the garment flat and smooth out. To get the inseam length, measure on the front from the crotch point, along the seam, to the hem.

For best results, measure over your undergarments.

HEIGHT CHART

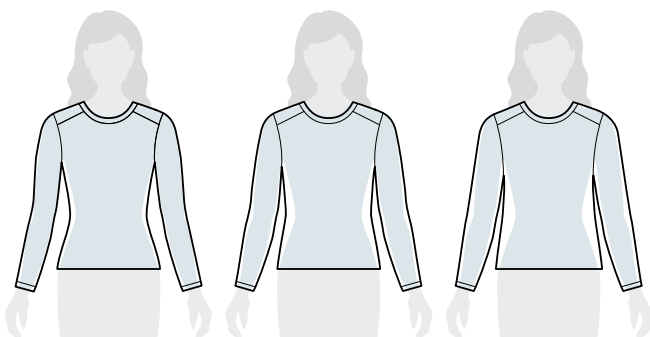


Short
5'1"-5'4"

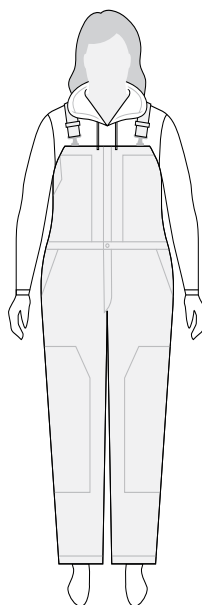
Regular
5'4"-5'8"

Tall
5'8"-5'11"

WOMEN'S TOPS FIT

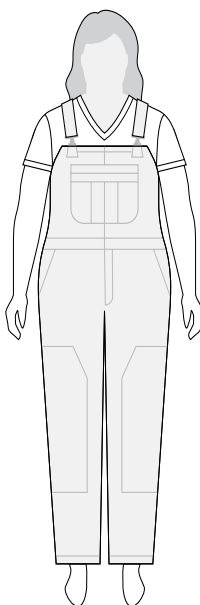


Slightly Fitted	Relaxed Fit	Loose Fit
Slightly fitted for a comfortable fit — Gives shape without being snug	Slightly loose for a comfortable fit — Subtle shape for range of motion	Roomy for a comfortable fit — Allows for maximum range of movement



LINED BIB OVERALLS

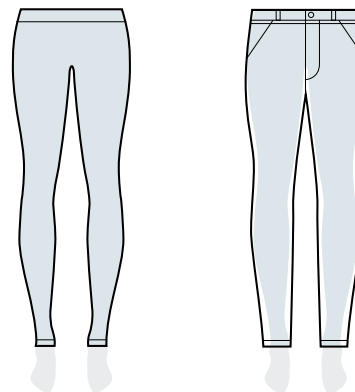
- Size to the largest part of your body
- Reference the inseam length chart and body measurement chart for guidance
- Measurements assume bib overall is layered over cold weather clothing. If you won't be layering, you may need to size down.



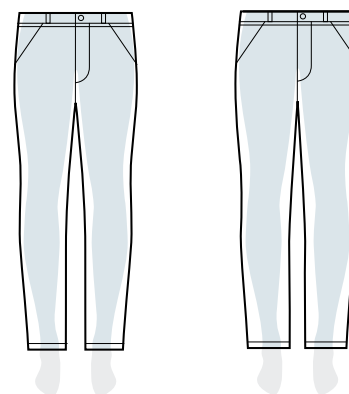
UNLINED BIB OVERALLS

- Size to the largest part of your body
- Reference the inseam length chart and body measurement chart for guidance
- Measurements assume bib overall is worn with a shirt and undergarments. If you plan to layer over pants, you may need to size up.

WOMEN'S PANTS FIT



Fitted	Slim Fit
Mid-rise sits just below the waist — Closest fit through the hip and thigh — Close to the body, but never too tight for work	Mid-rise sits just below the waist — Fitted through the hip and thigh — Tough enough for work, feminine enough for the weekends



Straight Fit	Loose Fit
Mid-rise sits just below the waist — Slightly fitted through the hip and thigh — A timeless fit that gives you the perfect amount of room to move	Mid-rise sits just below the waist — Easy fit through the hip and thigh — A classic look you can wear anywhere and everywhere





carhartt
COMPANY GEAR™

CARHARTT, INC.

5750 MERCURY DRIVE
DEARBORN, MI 48126
800-786-3916
CARHARTT.COM

**WE OUTFIT COMPANIES THAT
OUTWORK THEM ALL.**



carhartt

COMPANYGEAR.CARHARTT.COM

© 2021 Carhartt, Inc. All rights reserved.

INN080